

226 - 2493 MONTROSE AVENUE • ABBOTSFORD

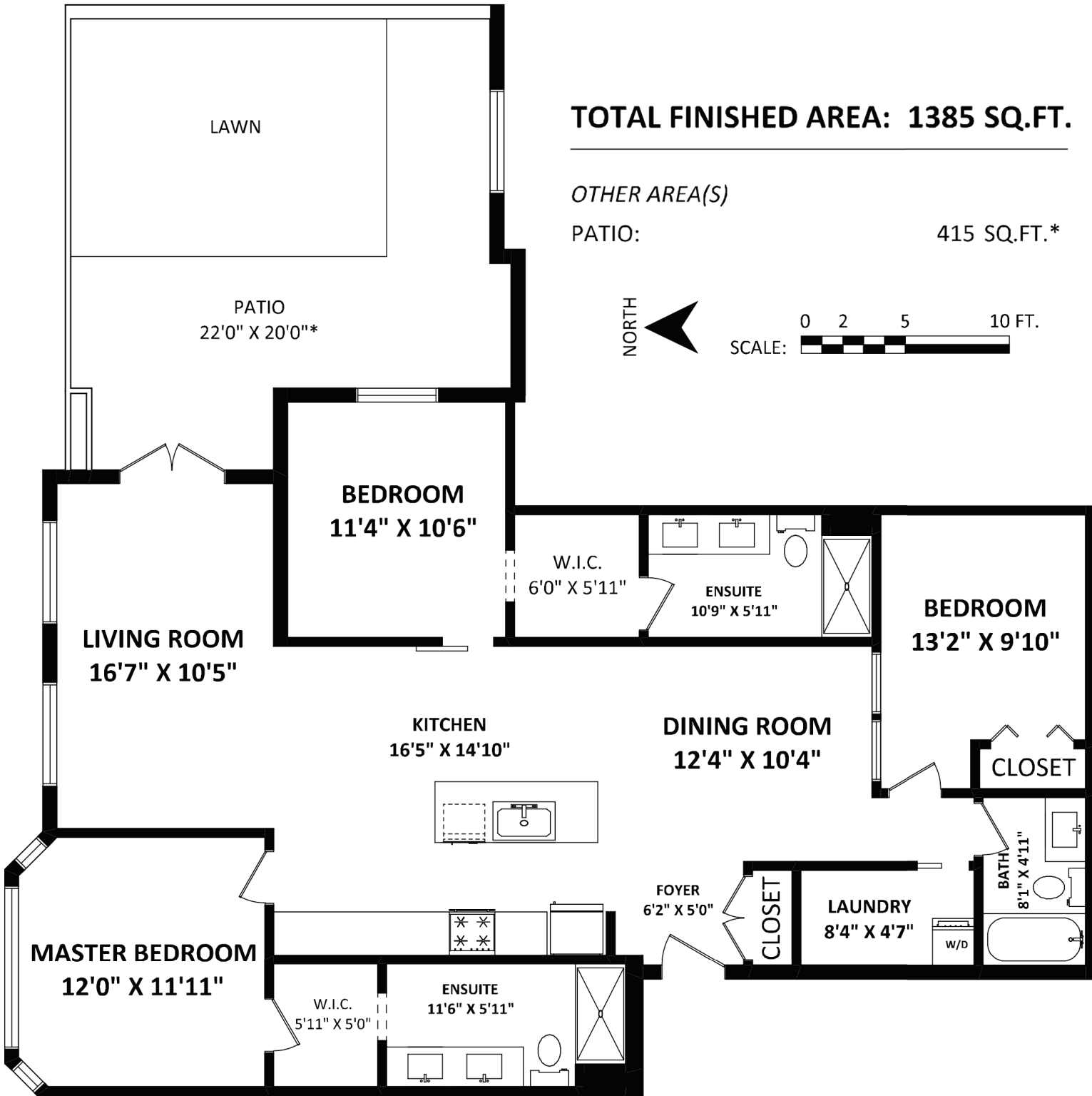
Welcome to...



TOTAL FINISHED AREA: 1385 SQ.FT.

OTHER AREA(S)

PATIO: 415 SQ.FT.*



226 - 2493 MONTROSE AVENUE • ABBOTSFORD

Richard Alexander
778-389-2164
rick@rickalex.ca



COLDWELL BANKER
WESTBURN REALTY



This floor plan is for marketing purposes only.



Please contact Richard Alexander, 778-389-2164, for specifications.

This communication is not intended to cause or induce breach of an existing agency agreement.



Coldwell Banker Westburn Realty
5489 Kingsway
Burnaby, BC V5H 2G1



 3  3	<p>Details</p> <p>Property Style: Corner Unit</p> <p>Type of Dwelling: Condo</p> <p>Year built: 2020</p> <p>Size: 1,385 sq. ft.</p> <p>Patio: 415 sq. ft.</p>	<p>Description</p> <p>Welcome to the brand new community of Upper Montrose Downtown Abby! This corner unit with a large walk out patio, has breathtaking panoramic views of the mountains and city. 3 Bedrooms and 3 bathrooms ensure comfort for everyone. When you get home, look forward to your local shops providing endless options: Coffee shops, restaurants, clothing boutiques, Universities, breweries, yoga, CrossFit and more. You have access to the business centre on the main floor. Your packages will be safe in the delivery lock up. And be sure to enjoy the bike storage that is steps from the main entrance. This is your new home.</p>
--	--	---

