

108 - 262 Salter Street • New Westminster



Features			
Price:	\$615,000	Type:	Ground Level Unit
Year Built:	2015	Size:	926 ft. ²
Bedrooms:	2	Maintenance Fee:	\$356.84
Bathrooms:	2	Taxes:	\$2,181.73

Please contact Rob Johnson, 604-880-2944, for specifications.
This communication is not intended to cause or induce breach of an existing agency agreement.

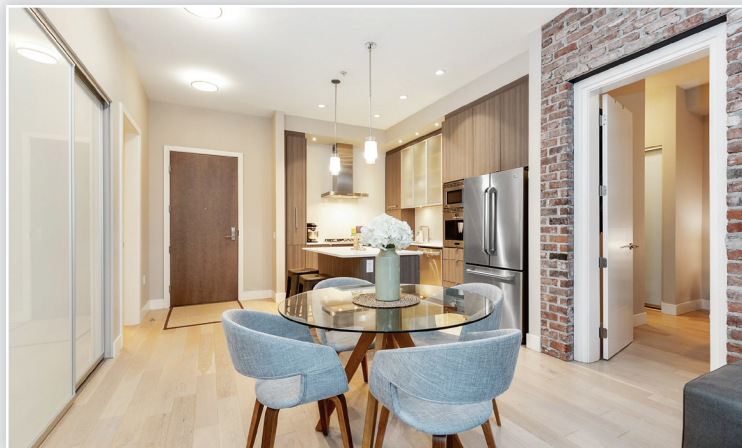


Rob Johnson Going the Extra Mile!!

604-880-2944

robjohnsonrealtor@gmail.com

www.robrealtor.com



Welcome to Portage of Port Royal. The ground level unit has spacious floor plan with lofty 10 ceilings & a beautiful brick feature wall. High end finishes, quartz counters, Side-by-Side appliance pkg, built-in stove/oven, microwave + coffee machine. Ensuite bath w/ double vanity, shower, and soaker tub. Enjoy the morning sun on the private, east facing patio and lawn area that opens up onto the quiet courtyard. Walking trails along Fraser River, outlet mall, dog park, and easy access to highways and only 30 mins to Vancouver. One parking / One storage locker included.

