

Welcome to...

28 - 3103 160th Street,
South Surrey



REAL ESTATE SERVICE WITH A DIFFERENCE

LORRAINE PATTERSON

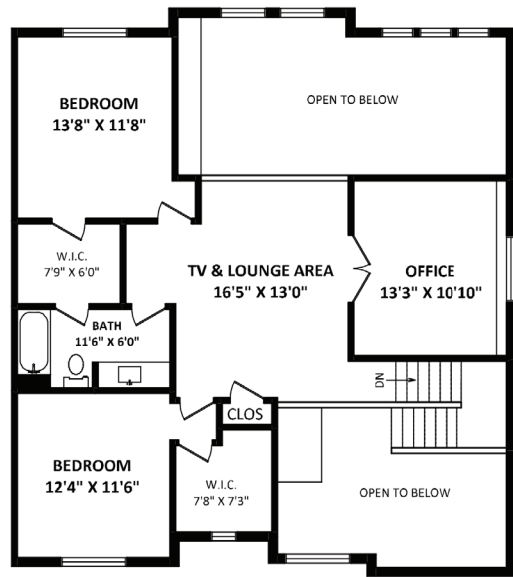
PHONE: 604-999-0919

EMAIL: Lorraine@ValleyLiving.ca

WEBSITE: www.ValleyLiving.ca

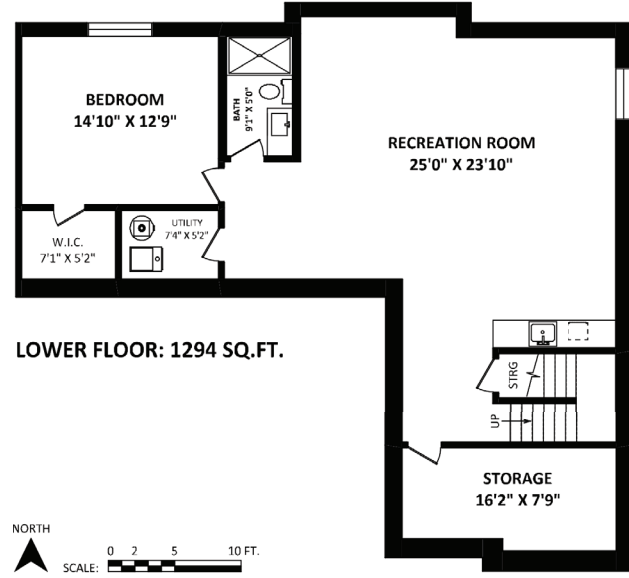
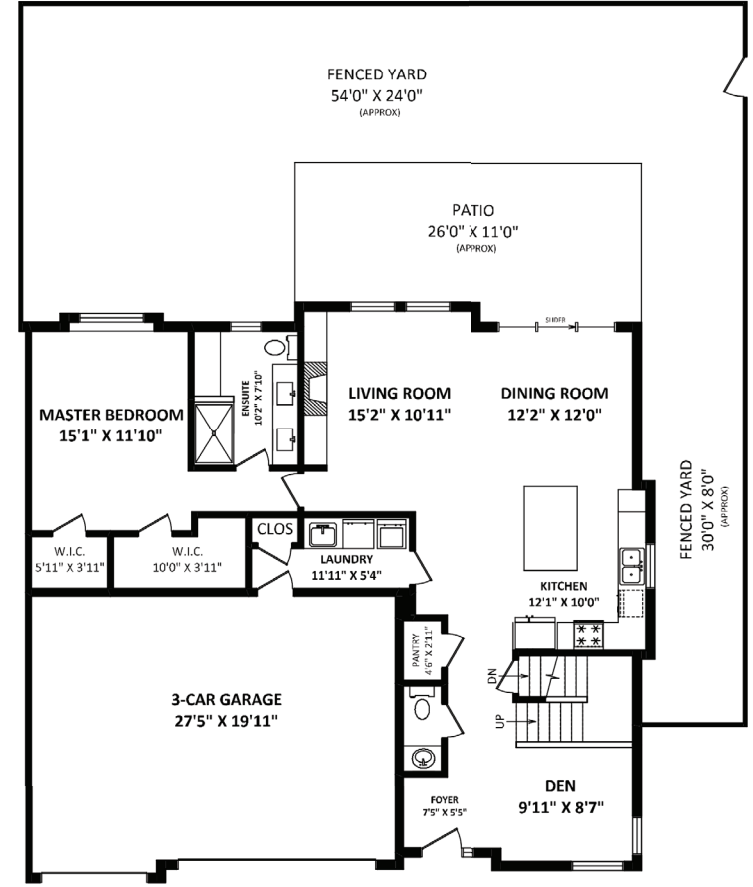
COMPANY: HomeLife Benchmark Realty (Cloverdale)

ADDRESS: #103 5830 176A Street Surrey, BC V3S 4H5



TOTAL FINISHED AREA: 3672 SQ.FT.

OTHER AREA(S)
3-CAR GARAGE: 574 SQ.FT.
PATIO: 293 SQ.FT.*
FENCED YARD: 1220 SQ.FT.*



Here Is The One!

Prima living! This Gorgeous duplex style townhome is set in an exclusive boutique enclave. Over 3600 square feet, rare triple car garage, main floor master bedroom with 2 walk in closets, soundproofed wall with neighbour. Large, beautifully landscaped yard that opens to central garden area. Designer touches throughout and loaded with tens of thousand of dollars in quality features & upgrades. Soaring 18 foot ceilings, extra windows, Gourmet kitchen with upgraded appliances & fixtures, wine fridge, heat pump and Air Conditioning, engineered hardwood flooring throughout. 4 bedrooms plus office, loft and beautifully finished full basement with bar area. Tons of storage, 2 pets allowed - no size restriction. Quick walk to excellent shops & services, schools, golf course & recreation. Live beautifully!



Please contact Lorraine Patterson for specifications: 604-999-0919

This communication is not intended to cause or induce breach of an existing agency agreement.





28 - 3103 160th Street, South Surrey

Bedrooms:	4
Bathrooms:	4
Size:	3,672 ft ²
Type:	Duplex Style Townhouse
Parking:	Triple Car Garage
Style:	2 Storey with Basement
Year Built:	2016
Strata Maintenance Fee:	\$616.43

For more photos and a virtual tour, please visit: www.valleyliving.ca



LORRAINE PATTERSON
 Phone: 604-999-0919
 Email: lorraine@valleyliving.ca
 Website: www.valleyliving.ca

HomeLife Benchmark Realty (Cloverdale)
 #103 5830 176A Street, Surrey, BC V3S 4H5