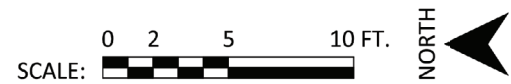
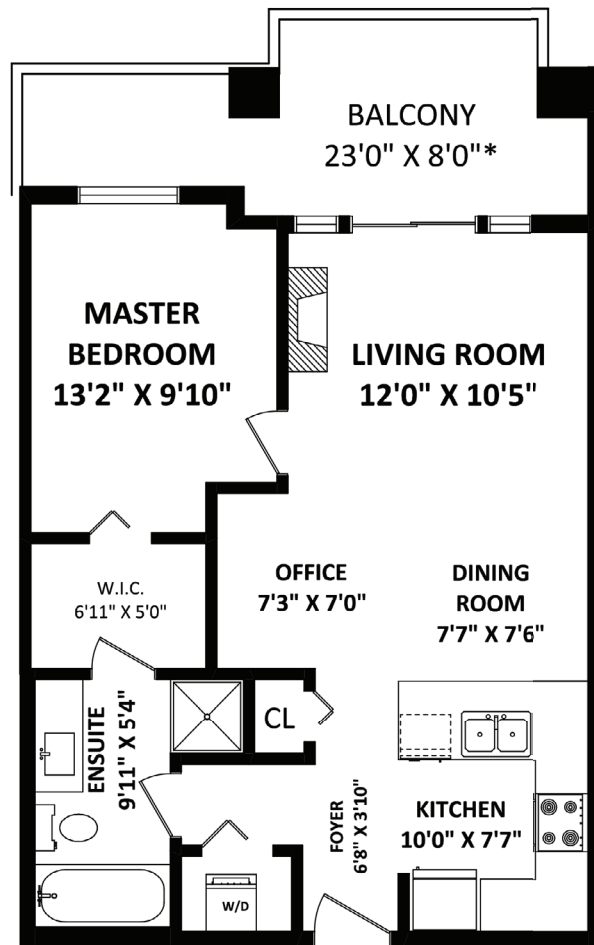


TOTAL FINISHED AREA: 669 SQ.FT.

OTHER AREA(S)
 BALCONY: 150 SQ.FT.*



316 - 2477 Kelly Avenue, Port Coquitlam

PRIME CENTRAL PORT COQUITLAM LOCATION!!!

\$399,900

Spacious 669 square foot 1 Bedroom/1 Bathroom condo with over sized covered patio space. Open concept kitchen with quartz countertops, sit up breakfast bar and stainless steel appliances with open dining and living room space allowing access to deck. Fantastic location, close to all your needs: Transit, Schools, Shopping, Restaurants, Gates Park and access to miles of Poco trails.

Features

Year Built:	2008
Maintenance Fee:	\$225.60
Style of Home:	Upper Unit
Bedrooms:	1
Bathrooms:	1
Size:	669 sq.ft.
Taxes:	\$1,602.97



CARMEN SMITH
 PERSONAL REAL ESTATE CORPORATION

Tel.: 778-773-2283 Email: carmensmithrealty@gmail.com
 www.wwww.carmensmitrealty.com.com

