

#6 - 12227 Skillen Street, Maple Ridge



Re/Max All Points Realty
#101 - 1020 Austin Avenue
Coquitlam, B.C. V3K 3P1
Office: 604-936-0422 Toll Free: 1.800.939.6838



This version of the floor plan is for marketing purposes only.
Please contact Kelley Law, 604-830-1825, for specifications.
This communication is not intended to cause or induce breach of an existing agency agreement.



KelleyLaw
REALTY



Kelley brings over 17 years experience as a Realtor in the Tri Cities & surrounding areas. Living and working locally in the Tri Cities, Kelley offers extensive knowledge of schools, neighborhoods, shopping, planning & current market conditions. Consistent top producer and award winner with Re/Max. Kelley brings a wealth of experience and knowledge to the table when assisting home Buyers and Sellers. Clients can expect sound real estate advice and exceptional service.

#6 - 12227 Skillen Street, Maple Ridge

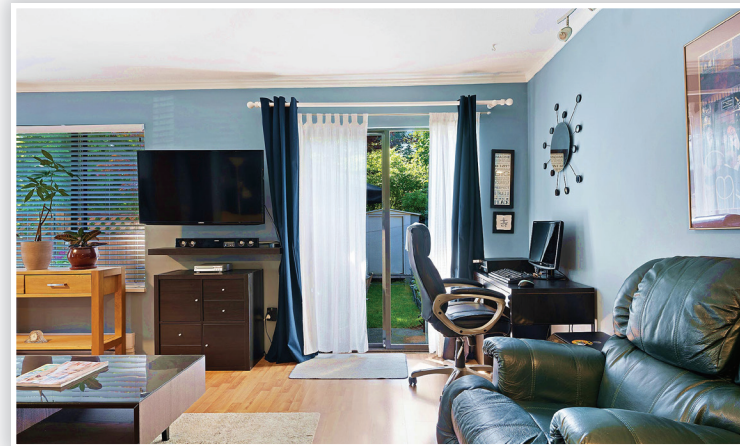


Visit me @ www.KelleyLawRealty.com



Re/Max All Points Realty
101 - 1020 Austin Avenue
Coquitlam, B.C. V3K 3P1
604-936-0422





DESCRIPTION

Rarely available END UNIT Townhome with beautiful large wrap around fenced yard backing onto greenbelt and creek in popular "McKinney Creek Estates". Laminate floors throughout main. W/B fireplace. New carpets, 3 bedrooms + laundry upstairs. Bright and spacious with 2 skylights for extra light. Oak kitchen cabinets + stainless steel appliances. This complex is conveniently located within walking distance to Laity view Elementary (Optional French Immersion) and Westview Secondary School (Soccer academy). Parks, Golf, shopping and transit. This unit features one of the largest yards, parking for 2 vehicles (R.V. parking available for additional \$15/month). Single garage plus storage. Travel the Golden Ears Bridge and be in Langley in 10 minutes!

FEATURES

Building Type:	End Unit Townhome
Built:	1985
Bedrooms:	3
Bathrooms:	2
Size:	1,137 ft ²
Maintenance Fee:	\$1959.17
Taxes:	\$324.68

