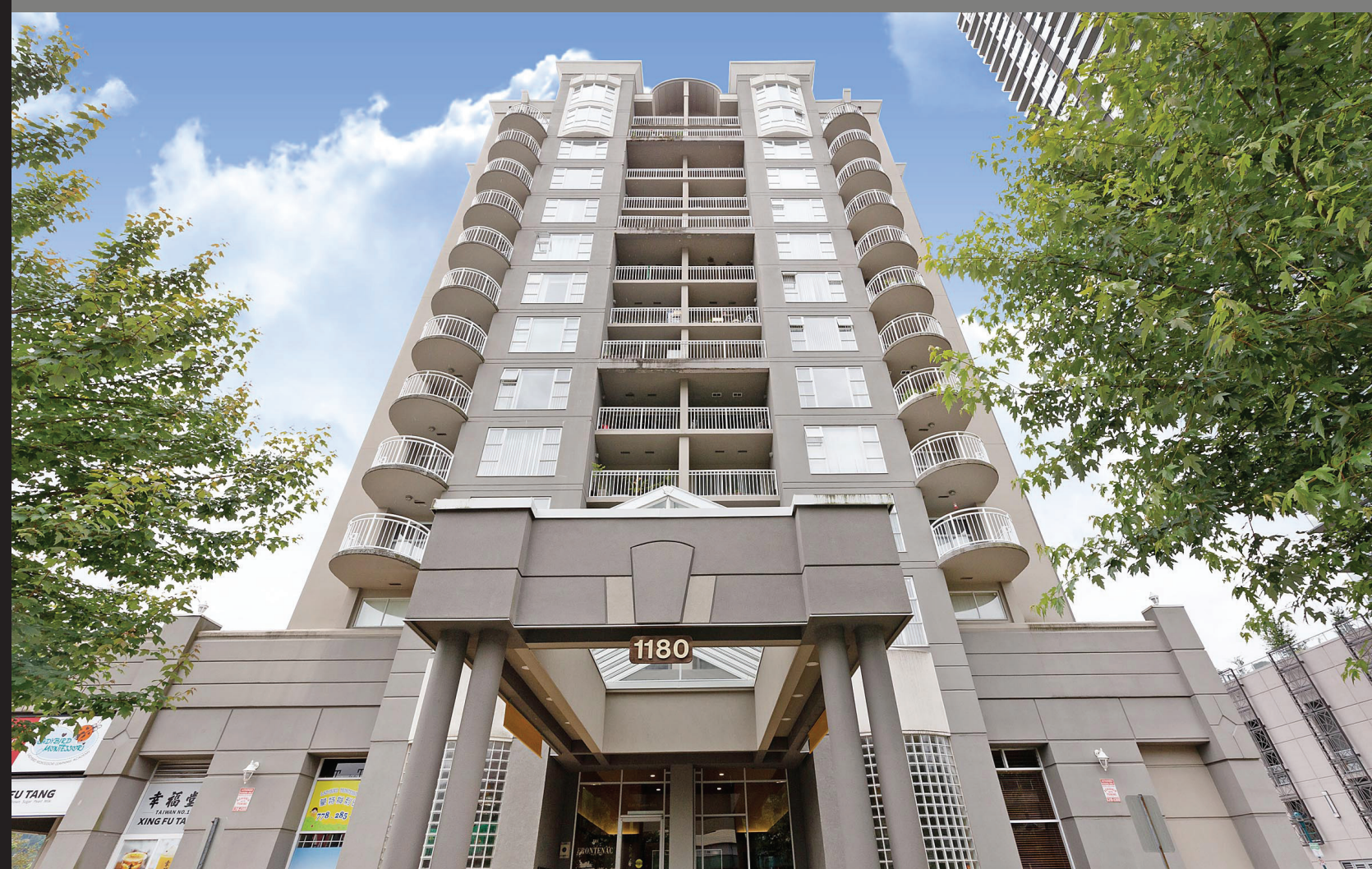




Welcome to

#906 - 1180 Pinetree Way, Coquitlam



Olga Slovak

Phone: (778) 388-2281



TEAM 3000 REALTY LTD

305 9940 Lougheed Highway Burnaby BC V3J 1N3

This version of the floorplan is for marketing purposes only.
Please contact Olga Slovak for specifications: (778) 388-2281

This communication is not intended to cause or induce breach of an existing agency agreement.





#906 - 1180 Pinetree Way Coquitlam

FRONTENAC TOWER - by Coquitlam Centre, panoramic views. business, cultural & recreation central location and transportation at your doors. Stylish elevated Skytrain, buses and West Coast Express, variety to choose from that will take you to many destinations, so leave your car at home.All levels of schools and quick commute to Simon Fraser University just up the hill.Douglass College Campus & a theatre a short walk from your doors, senior centre, pool facility around the corner and Coquitlam Centre Town Sport Centre with variety of sports activities & children splashdown park. You would be amazed with this location. A rare 3 bedrooms spacious suite and 3 balconies.House size rooms, private master bedroom wing with ensuite bath and huge balcony to enjoy day or night time skyline. Tri-Cities best location, but complimented by Port Moody Rocky Point Park with walking and biking trails, boat launch berth, a well known restaurant to top it off. Take a drive up to 9 & 18 hole golf course & hiking trails

Style	Upper - End Unit
Year Built	1990
Maintenance Fee	\$432.25
Bedrooms	3
Bathrooms	2
Size	1,445 ft ²



OLGA SLOVAK
Phone: (778) 388-2281

TEAM 3000 REALTY LTD
305 9940 Lougheed Highway Burnaby BC V3J 1N3



OLGA SLOVAK
Phone: (778) 388-2281

TEAM 3000 REALTY LTD
305 9940 Lougheed Highway Burnaby BC V3J 1N3