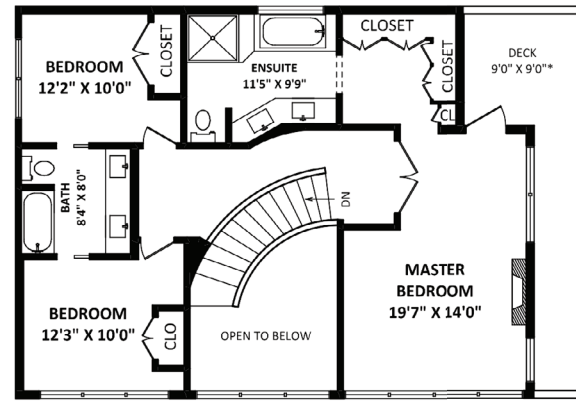


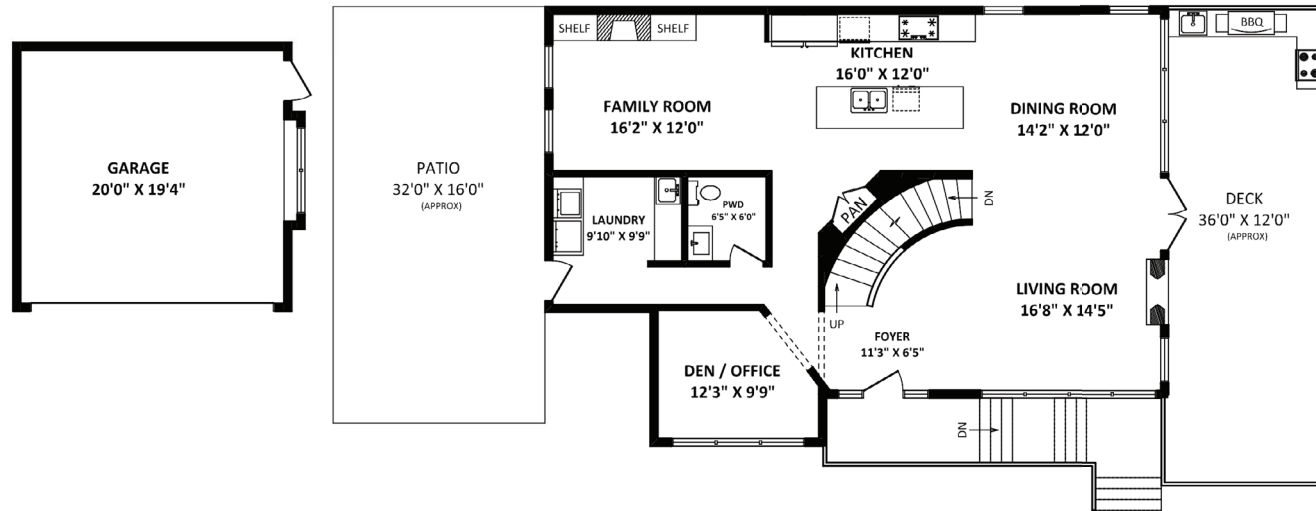
TOTAL FINISHED AREA: 3844 SQ.FT.

OTHER AREA(S)

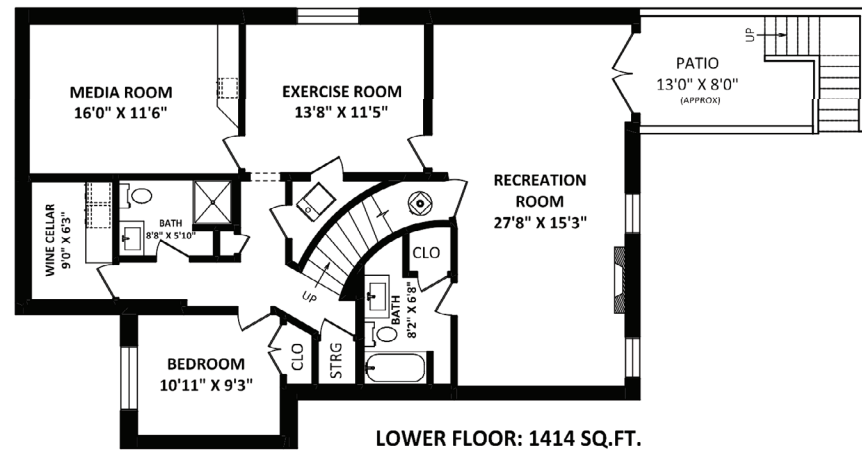
GARAGE: 434 SQ.FT.
DECKS: 610 SQ.FT.*
PATIOS: 645 SQ.FT.*



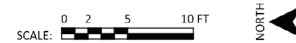
UPPER FLOOR: 1016 SQ.FT.



MAIN FLOOR: 1414 SQ.FT.



LOWER FLOOR: 1414 SQ.FT.

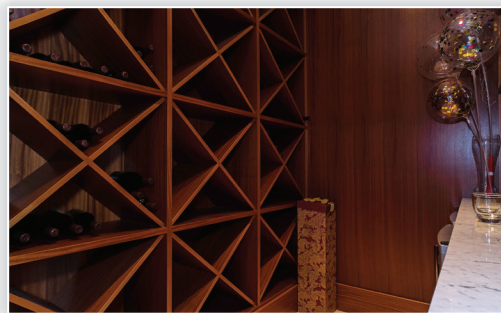


WENDI Gustavson
Personal Real Estate Corporation

West Vancouver Real Estate

604.649.8624

wendi@wendigustavson.com
www.wendigustavson.com



This version of the floorplan is for marketing purposes only.
Please contact Wendi Gustavson PREC for specifications: 604.649.8624

This communication is not intended to cause or induce breach of an existing agency agreement.



Angell, Hasman & Associates Realty Ltd.
#203 – 1544 Marine Drive West Vancouver, BC V7V 1H8
Independently Owned and Operated





Details



4

Style of Property: 3 Storey



5

Type of Dwelling: Detached

Year Built: 2009

Living Area: 3,844 sq. ft.

Lot: 6,550 sq. ft.

Frontage: 47.70 ft.

Taxes: \$8,928.77

Description

This beautiful custom-built home is not to be missed. With extraordinary attention to detail throughout, you will enjoy your spectacular new home in a spectacular location. Only blocks to the sea and all the amenities the Seaside Village of Ambleside offers, this community is heaven on earth. This most beautiful home welcomes you with a grand entrance and soaring ceilings. The open plan layout from livingroom to dining to kitchen, has a magical nuance for entertaining and big family dinners. Flow easily onto the cozy porch, complete with fireplace for after dinner conversation. Or curl up in the adjacent family room. The master suite up, continues to impress with a spa-inspired ensuite, private deck to the view and cozy fireplace. There are 2 more bedrooms on this level that share a lovely Jack & Jill washroom. You'll entertain friends for the big games or catch a romantic comedy in the theatre down. A guest bedroom, wine cellar, gym, recreation room, and 2 bathrooms complete this floor!! Suite potential!

