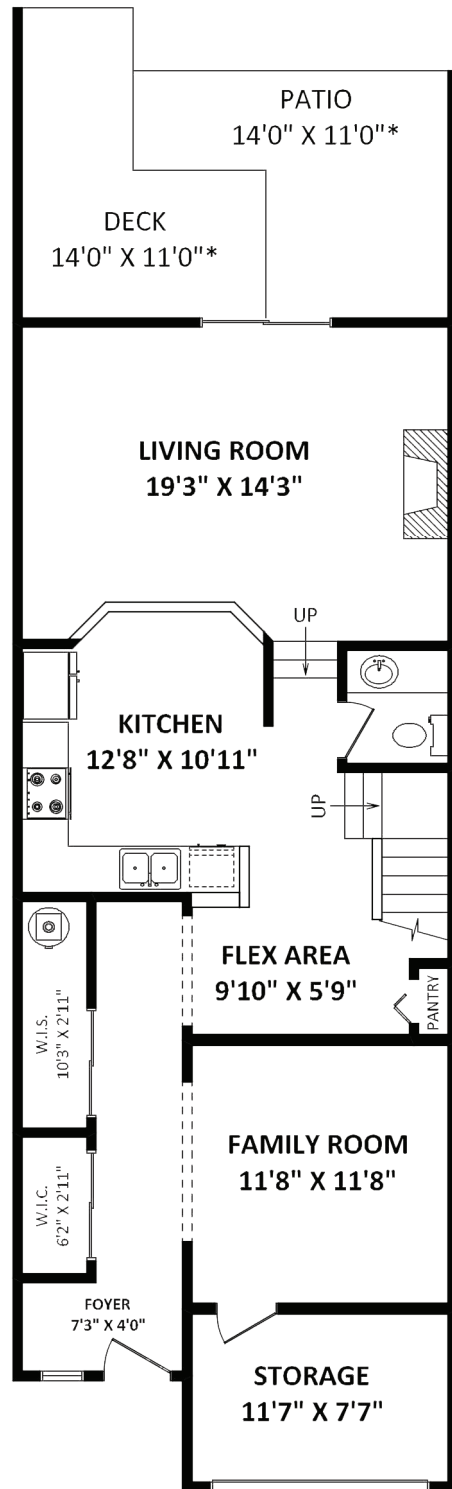


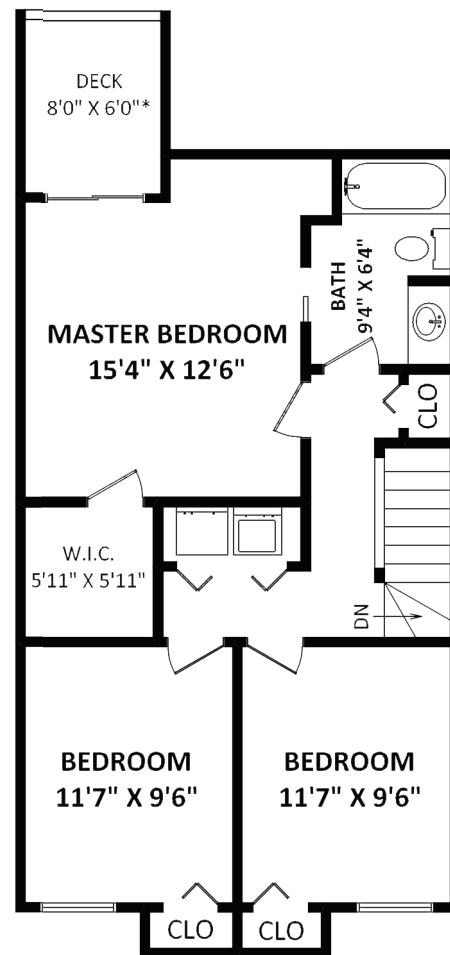
#129 - 3455 Wright Street • Abbotsford



MAIN FLOOR: 924 SQ.FT.

TOTAL FINISHED AREA: 1612 SQ.FT.

OTHER AREA(S)
 STORAGE: 95 SQ.FT.
 DECKS: 165 SQ.FT.*
 PATIO: 120 SQ.FT.*



UPPER FLOOR: 688 SQ.FT.



Shelly Lederer Prec
 Personal Real Estate Corporation
 Experience ~ Results
604.839.3491
 shellylederer.ca





This version of the floor plan is for marketing purposes only.
 Please contact Shelly Lederer PREC, 604-839-3491, for specifications.
 This communication is not intended to cause or induce breach of an existing agency agreement.



RE/MAX Treeland Realty Ltd
 101 6337 198th Street, Langley BC V2Y 2E3
 604-533-3491



Details		Description
 3	Property Style: 2 Storey	Adorable Unit. Wonderful Layout, Open Concept, Large Bedrooms. Upgrades include Updated Kitchen Cabinets, all new Fresh Paint, Flooring on main level, New Bosch SS DW, SS Fridge & OTR Micro. Newer Front load W&D, Huge Closets and Amazing Storage Space. Lovely Gas FP, Huge Private fenced Backyard. Complex located in culdesac with Thomas Swift Elementary & 13 minute walk to Robert Bateman. Walk your kids to school. Lovely mature neighborhood. Great Family complex. Bring your large dog, cats & Kids.
 2	Type of Dwelling: Townhouse	
	Year Built: 1977	
	Living Area: 1,612 sq. ft.	
	Taxes: \$2,116.63	
	Maintenance Fee: \$300.00	

