

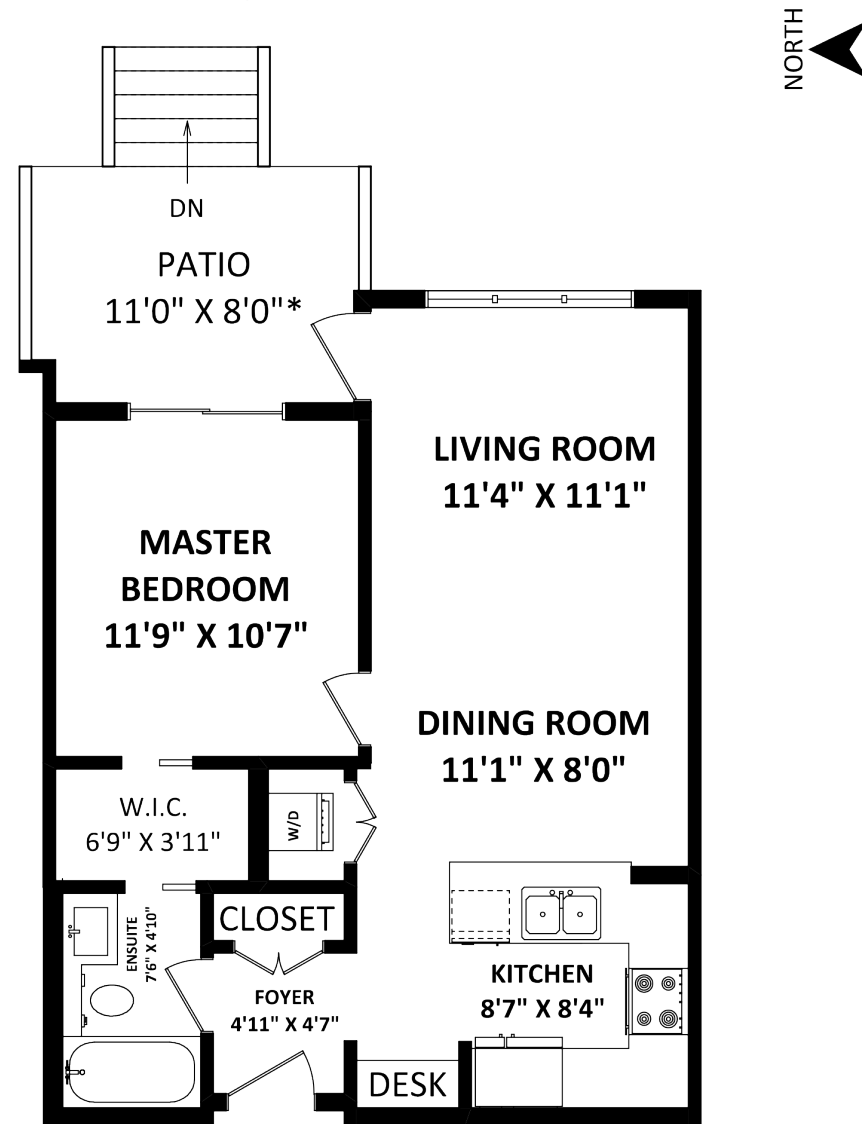
112 - 12525 190A St, Pitt Meadows

TOTAL FINISHED AREA: 607 SQ.FT.



OTHER AREA(S)

PATIO: 95 SQ.FT.*



Features

Year Built:	2011
Type:	Residential Attached
Style:	Corner Unit
Size:	608 ft. ²
Maintenance Fee	\$323
Bedroom:	1
Bathroom:	1



Unique one bedroom ground floor unit in Cedar Downs complex in Pitt Meadows. Spacious covered front patio for year around relaxation. Guests can park on the street come through the gate and knock on your door. Open plan with laminate floors and 9 foot ceilings. Kitchen has stainless steel appliances and there are granite counters in the kitchen and bathroom. There is access to the bathroom which has heated floors, from the bedroom through the walk in closet. The bedroom is air conditioned, there is one underground parking space and the storage for the unit is across the hall. Bring the cats or dogs, maximum 2 pets and dogs must be under 40 pounds. Thinking of investment? No problem here as there is no rental restrictions. Easy access to public transportation including West Coast Express.

THE PEARCE TEAM

604-466-4549

sold@thepearceteam.com • www.thepearceteam.com



Helping you is what we do.



Please contact The Pearce Team, Royal LePage Brookside Realty, 604-466-4549, for specifications.

This communication is not intended to cause or induce breach of an existing agency agreement.

Royal LePage Brookside Realty • 11933 224 Street, Maple Ridge, BC V2X 6B2

