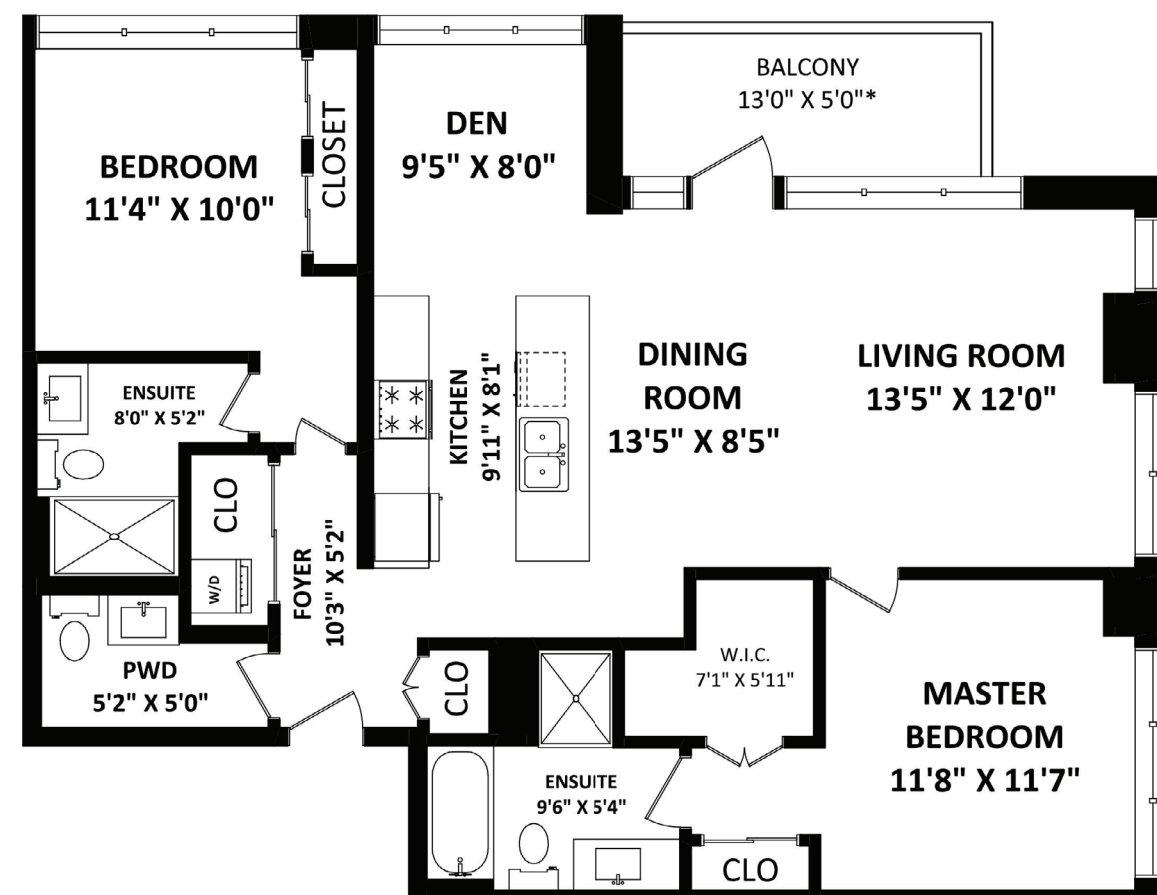


TOTAL FINISHED AREA: 1163 SQ.FT.

OTHER AREA(S)

BALCONY: 75 SQ.FT.*



SCALE: 0 2 5 10 FT
NORTH



This version of the floor plan is for marketing purposes only.

Please contact Clinton Au 604-319-9899, for specifications.

This communication is not intended to cause or induce breach of an existing agency agreement.



Interlink Realty



Clinton Au PREC

604-319-9899

ClintonAu@gmail.com







2



3

Details	
Property Style:	Corner-Upper Unit
Type of Dwelling:	Condo
Year Built:	2013
Living Area:	1,163 sq. ft.
Taxes:	\$2,902.13
Maintenance Fee:	\$521.82

Description

Spacious 2 bedrooms plus Den (1,174 SF) 3 baths concrete apartment at the heart of Richmond! Bright SE corner unit with amazing Mountain and City View. Featured with each bedroom has ensuite bathroom, open Den next to the kitchen, Air-cond system,luxurious kitchen with Bosch appliances, functional layout, upgraded with new paint and new wood flooring. Greatest facilities with indoor pool, gym, sauna, yoga room, beautiful garden water work. Steps to Canada Line, public transit, shopping malls, restaurants, supermarket and Trinity University. School catchment, Brighthouse Elementary and Richmond Secondary. This is a must SEE! Call for your private showing NOW!

