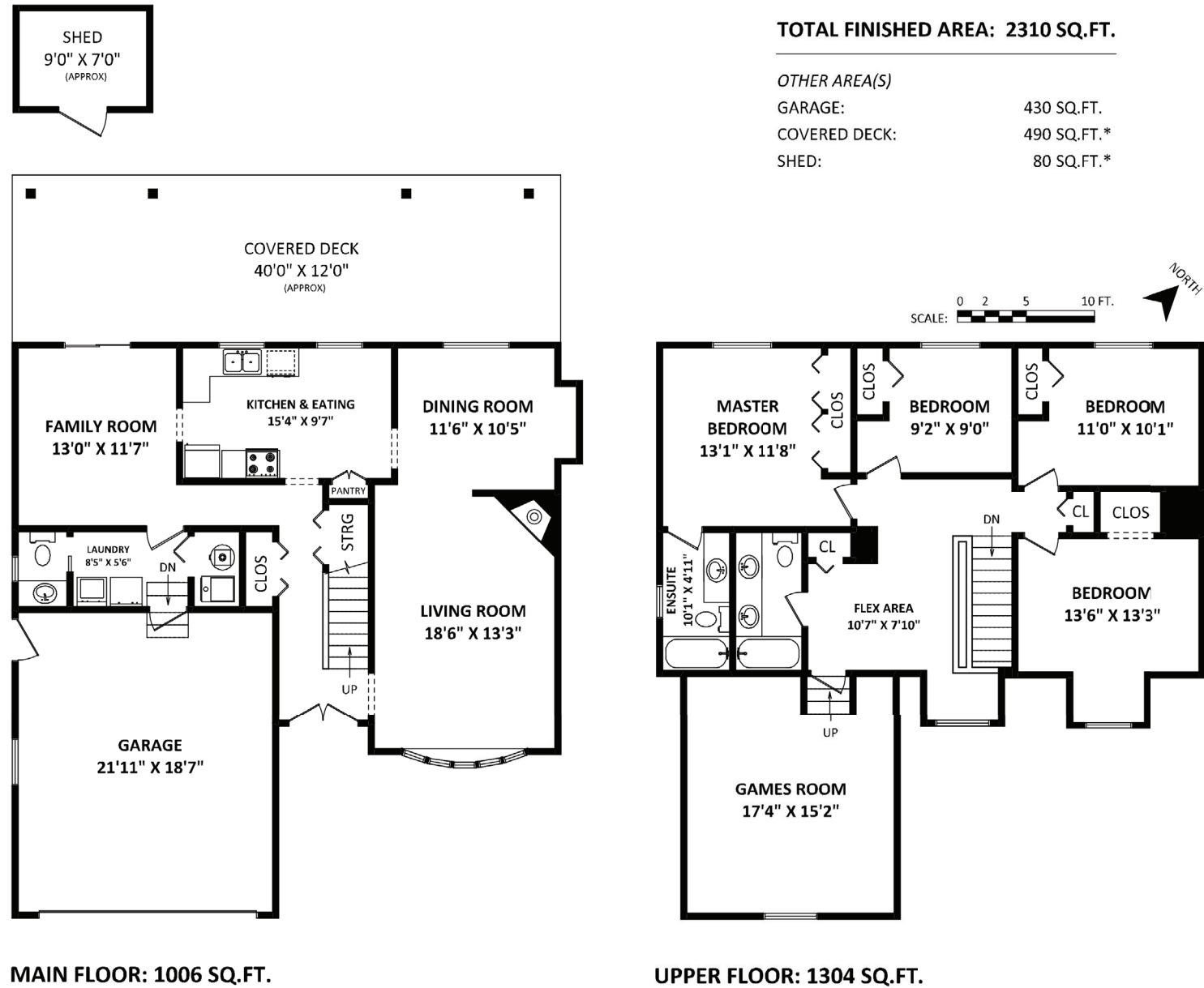
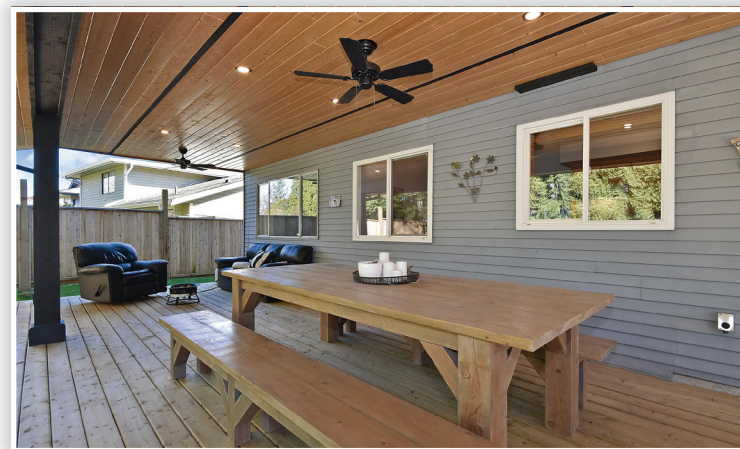


3727 Harwood Crescent • Abbotsford



3727 Harwood Crescent • Abbotsford



Don McNeill

Residential & Commercial Realtor®

Cell: 604 854 2827

don@vbyerealty.com

www.donmcneill.com



Vybe Realty LTD
#320 2539 Montrose Ave.
Abbotsford BC V2S 3T4
604 855 SOLD

This version of the floor plan is for marketing purposes only.

Please contact Don McNeill, 604 854 2827, for specifications.

This communication is not intended to cause or induce breach of an existing agency agreement.





4



3

Details

Property Style:	2 Storey
Type of Dwelling:	Detached
Year Built:	1981
Living Area:	2,310 sq. ft.
Lot Size:	6,403 sq. ft.
Frontage:	104.17 ft.
Taxes:	\$3,613.02

Description

Centrally located this Cape Cod 2 story home has it all for a large family. Hard to find 4 bedrooms above with a flex area and large games room for all the activities. Main floor features a formal dining room, living area with gas fireplace and a separate family room. The backyard features an amazing 490 sq ft covered deck with pot lights, ceiling fans and NG hook up! Thousands spent on landscaping and shrubs etc. 220V in garage. Centrally located this home is close to shopping and walking distance to Chief Dan George middle school Roberta Bondar Elementary school.

