



Get The Price & MLS® On Your Phone!  
 Get our FREE APP sent directly to your smartphone.  
 To: **65656** Msg: **4SALE2**

# 32801 Kudo Drive, Mission

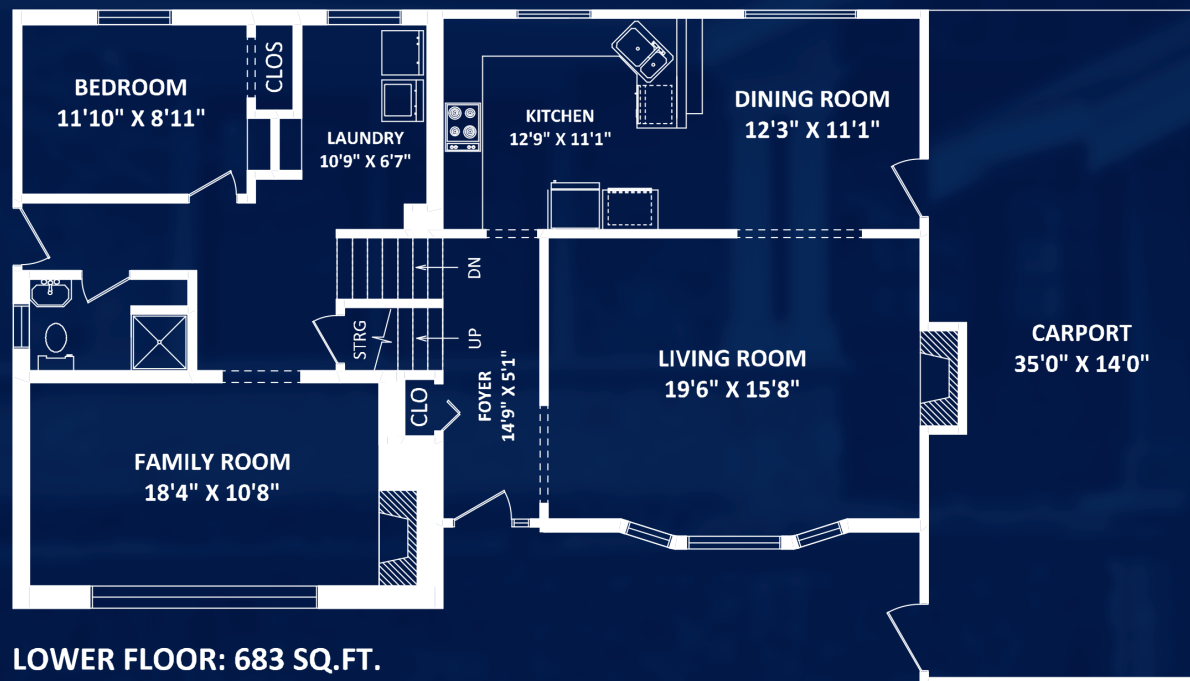


UPPER FLOOR: 744 SQ.FT.

TOTAL FINISHED AREA: 2148 SQ.FT.

OTHER AREA(S)

CARPORIT: 490 SQ.FT.



LOWER FLOOR: 683 SQ.FT.

MAIN FLOOR: 721 SQ.FT.



This version of the floorplan is for marketing purposes only.  
 Please contact Balance Real Estate Group for specifications: 604-574-0161.  
 This communication is not intended to cause or induce breach of an existing agency agreement.





## 32801 Kudo Drive, Mission

3 level split home in quiet Cul-de-sac on large close to 10,000SF lot. This over 2000sf 4 bedroom, 2 bathroom home has Hardwood wood flooring and gas fireplace in the spacious livingroom with views of Mount Baker. Gas fireplace in recreation room, 1 bedroom below and separate entry with potential to suite. Bathrooms updated 2020. Brand NEW furnace 2020. Hot water tank 2019. Metal roof. Exterior freshly painted. Short walk to Cherry Hill Elementary. Only a 5-minute drive to the West Coast Express, shopping, restaurants and so much more.

Up-to-Date Price – To: **65656** Msg: **4SALE2**



Taxes	\$2,658.91 (2019)
Lot	9,888 ft <sup>s</sup>
Size	2,148 ft <sup>2</sup>
Year Built	1960
Type	3 Level Split
Bedrooms	4
Bathrooms	2 Full

For more information contact the Balance Real Estate Group: **604-574-0161**



Balance Real Estate Group 604-574-0161  
 Homelife Benchmark Realty Corp  
 #103 5830 176A St, Surrey BC V3S 4H5