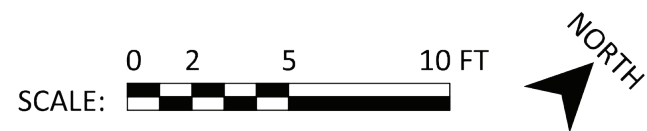
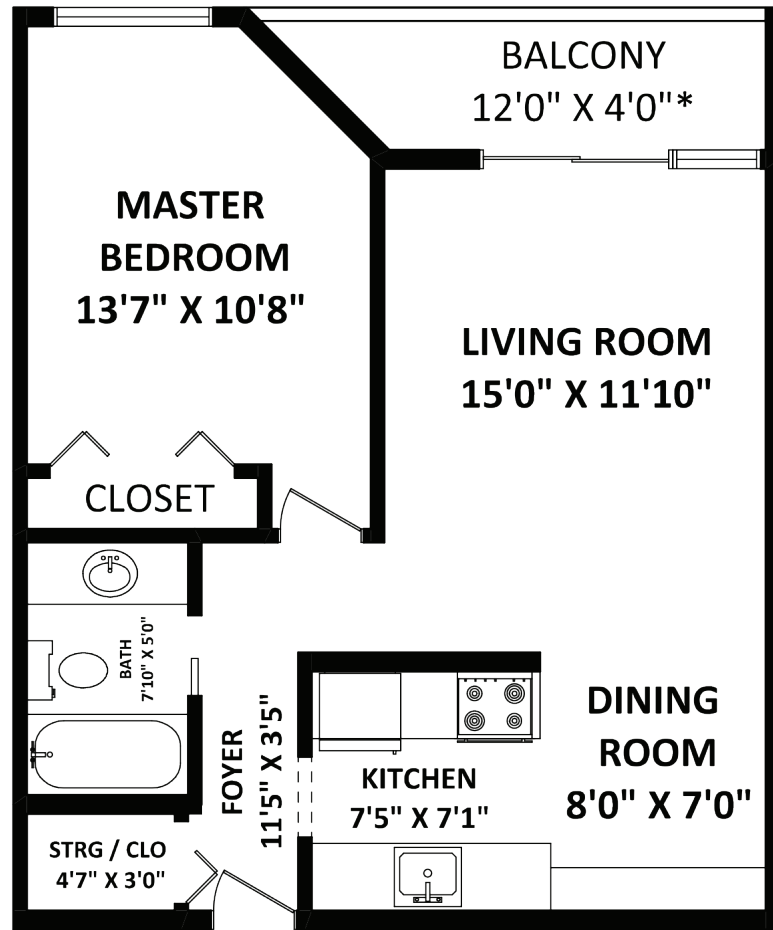


TOTAL FINISHED AREA: 601 SQ.FT.

OTHER AREA(S)

BALCONY: 59 SQ.FT.*



John McKenzie

604-715-3231

john@jrmckenzie.com

www.jrmckenzie.com



202 330 E 1st St • North Vancouver

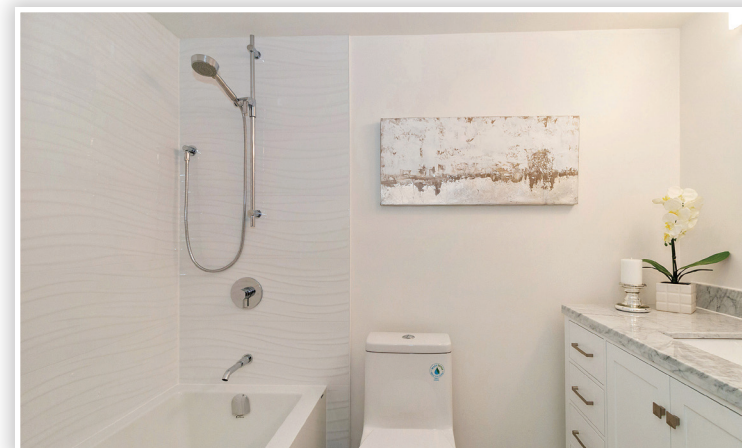
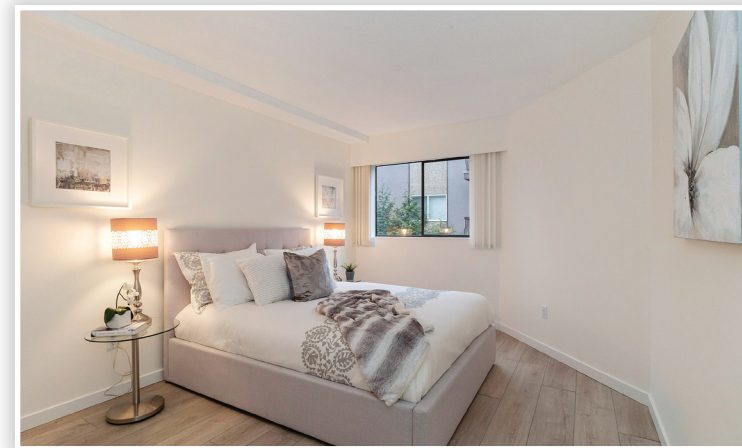
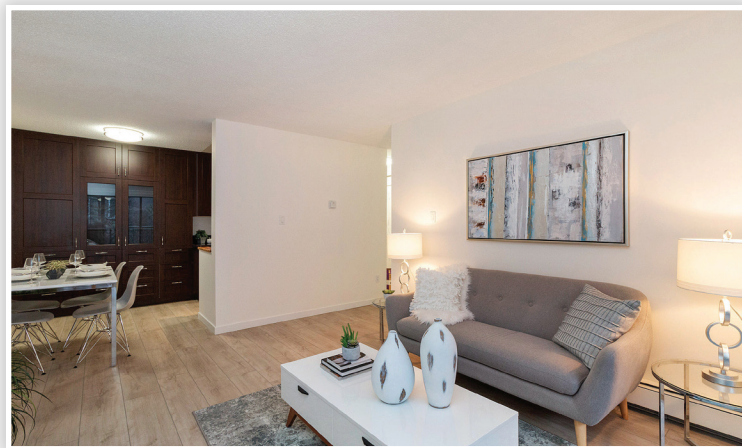


Please contact John McKenzie, 604-715-3231, for specifications.

This communication is not intended to cause or induce breach of an existing agency agreement.



RE/MAX Crest North Vancouver
 101 - 2609 Westview Drive, North Vancouver, BC V7N 4M2
 604-988-8000



Description

Welcome to Portree House, a small professionally managed and well maintained building on the quiet edge of Lower Lonsdale. A walk score of 83 says it's a short walk to everything Lolo has to offer including easily accessible transit, restaurants, specialty shops, recreation, fitness studios, drug store, pharmacies..... The kitchen, remodeled in 2016, features SS appliances, brand new stove and hood fan in 2020. The bathroom, living room and dining area were renovated in 2019 and feature new wide plank laminate flooring, base boards, new doors, LED lighting, all the switches and receptacles have been brought to code, new blinds, freshly painted. The bathroom, completely redone from the studs out has a gorgeous soaker tub with a stunning ceramic tile surround, shiny matching chrome taps and faucets, fabulous vanity with a Carrera marble top, undermount sink, LED light fixture, plenty of drawers, new fan/light combination, a sleek easy clean dual flush toilet and lovely tile floors. Everything done to code with permits.

Details

Property Type:	Condo
Year Built:	1976
Living Area:	601 sqft
Baths:	1
Beds:	1
Strata Maint. Fee:	\$251/mo
List Price:	\$399,900