

2323 Hampshire Place • Abbotsford



Carole Ball

“Give ‘The Ball’ a Call”

604-308-5594



2323 Hampshire Place • Abbotsford



Features

Style: 2 Storey w/Bsmt.

Size: 3023 sq/ft

Bedrooms: 5

Bathrooms: 4

Year Built: 1989

Taxes: \$4599.64

Lot: 12120 sq/ft

carole@caroleball.com • www.caroleball.com

RE/MAX Little Oak Realty

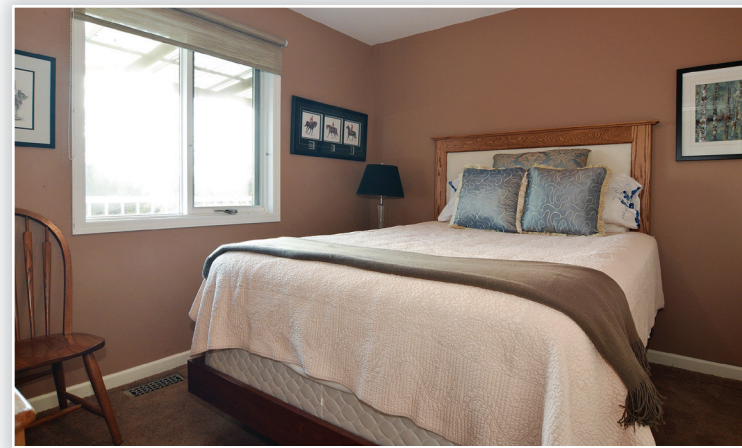
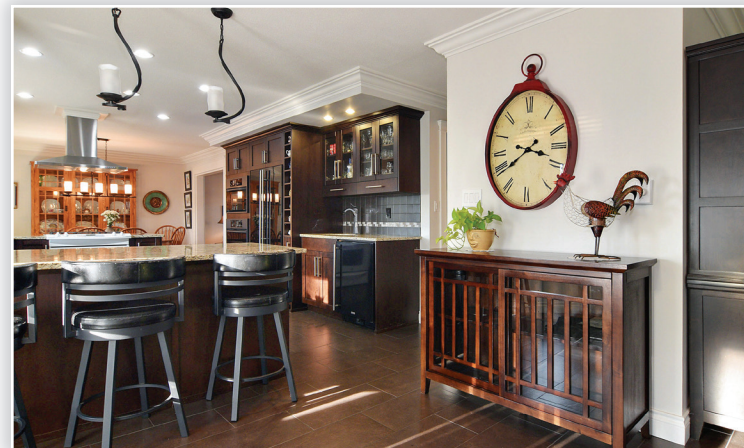
9-2630 Bourquin Cres W Abbotsford BC V2S 5N7



Please contact Carole Ball, 604-308-5594, for specifications.

This communication is not intended to cause or induce breach of an existing agency agreement.





Location! Location! Never before offered! Fabulous 2 storey plus basement home on peaceful and quiet cul de sac in popular East Abbotsford. Newer kitchen, flooring, paint and even a hot tub too! 4 Bedrooms up, 1 bedroom down, bathroom, family room and workout area down. Newer roof. Close to all levels of schools and ARC. Easy access to Save On Foods, Freeway, and US border. Priced to sell at \$875,000!!