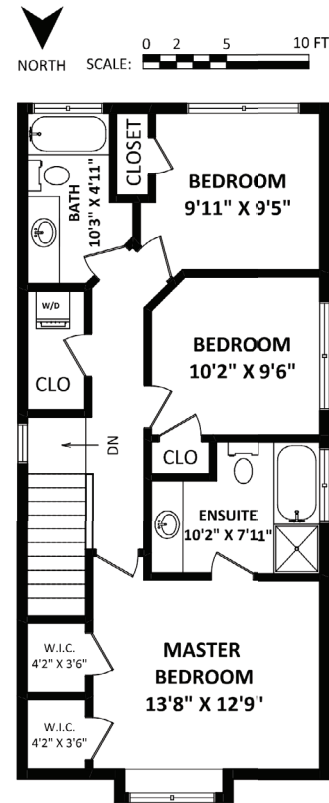
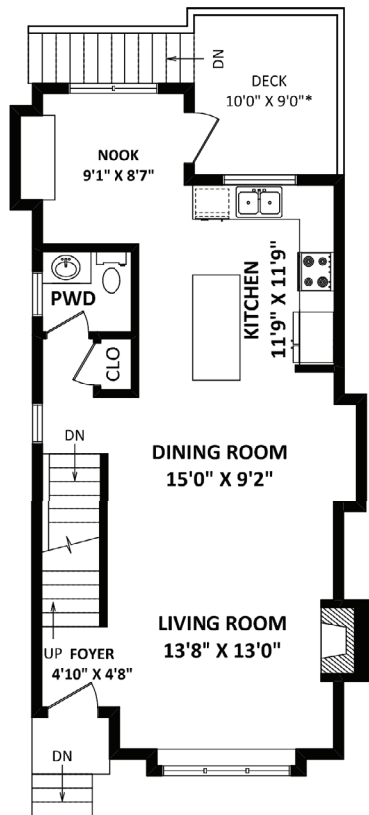
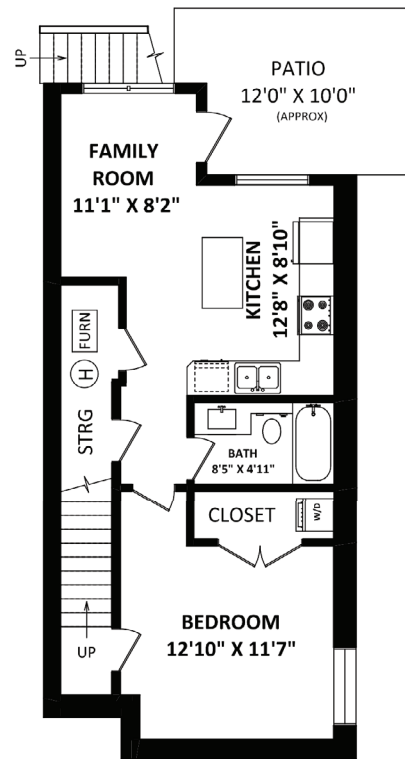


TOTAL FINISHED AREA: 2179 SQ.FT.

OTHER AREA(S)

GARAGE: 385 SQ.FT.
 DECK: 90 SQ.FT.*
 PATIO: 120 SQ.FT.*



24420 102 Avenue, Maple Ridge

Beautiful!!

\$749,900

BEAUTIFUL!!!! Like Brand New 4 bedroom 4 bathroom home in JACKSON PARK by Oakvale Development. Fantastic great room design with 9' ceilings and laminate wood style floors on the main and basement. Modern urban style kitchen with soft close drawers, stainless steel, quartz countertops and generous island. Bonus Nook space off Kitchen could be used as an office or play space for the kids. Access off of kitchen to generous deck space with stairs leading to fenced yard and detached double garage. Three nice size bedrooms upstairs with two full bathrooms. Separate entrance downstairs with separate laundry space makes for the perfect inlaw suite. Steps to Community Parks, Albion Coffee & Pizzeria, Albion Elementary and 10 minutes to Westcoast Express.

Features

Year Built:	2014
Style of Home:	XX
Bedrooms:	4
Bathrooms:	4
Size:	2,179 sq.ft.
Lot:	2,558 sq.ft.
Taxes:	\$4,336.40



CARMEN SMITH
 PERSONAL REAL ESTATE CORPORATION

