



Claudio Tonella
REAL ESTATE REPRESENTATIVE



(604) 340-8238

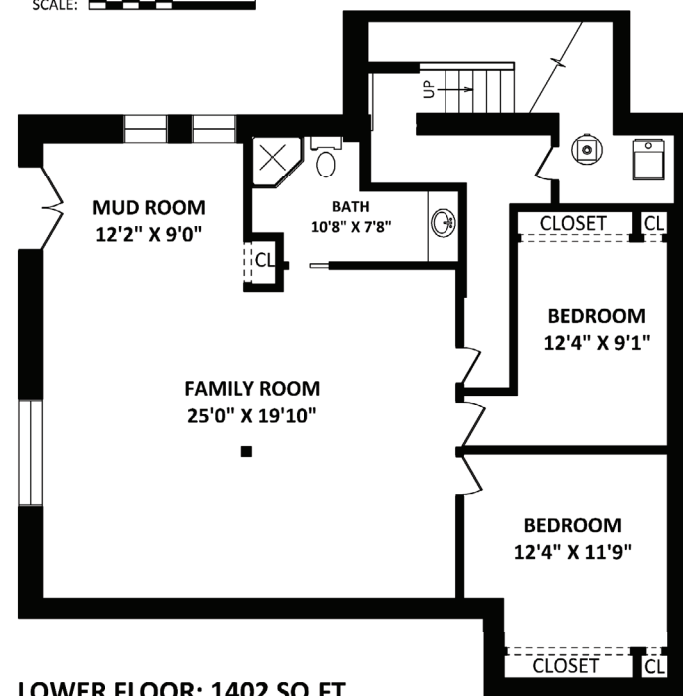
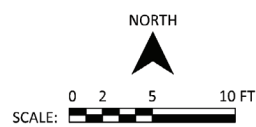
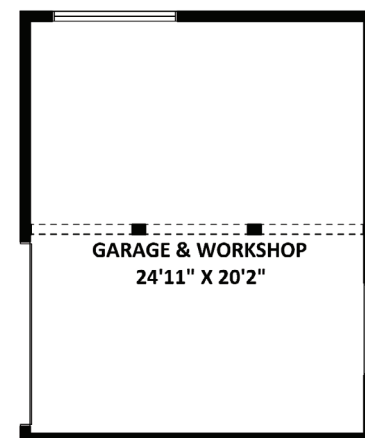


Sutton Group
West Coast Realty

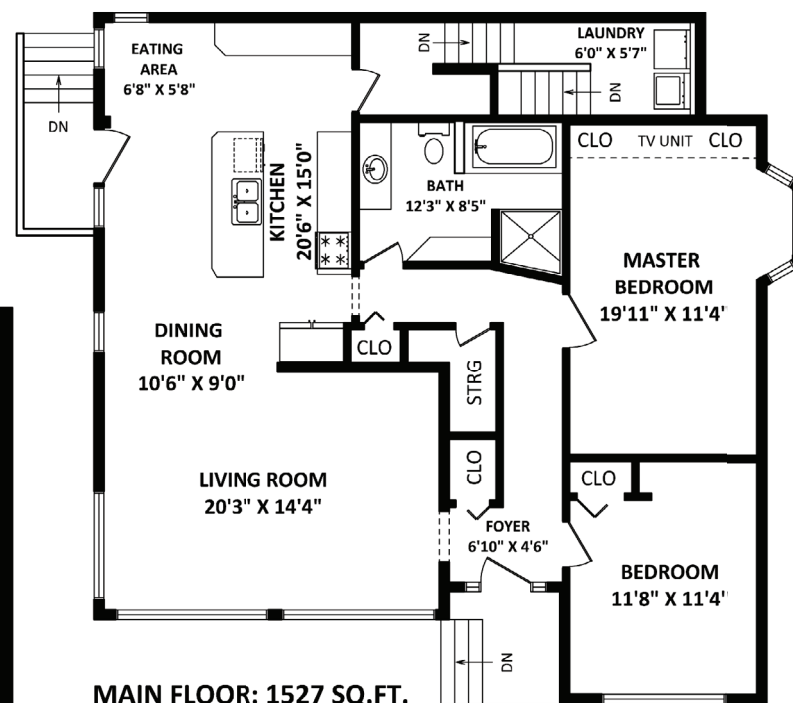
2840 Mount Seymour Parkway, North Vancouver

TOTAL FINISHED AREA: 2929 SQ.FT.

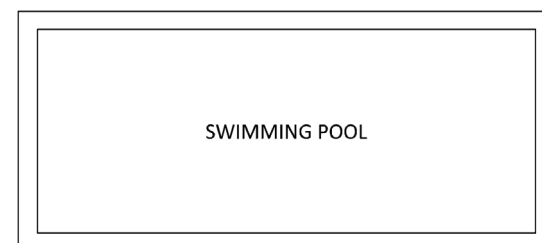
OTHER AREA(S)
GARAGE & WORKSHOP: 556 SQ.FT.



LOWER FLOOR: 1402 SQ.FT.



MAIN FLOOR: 1527 SQ.FT.



This version of the floor plan is for marketing purposes only.
This communication is not intended to cause or induce breach of an existing agency agreement.





2840 Mount Seymour Parkway

Blueridge estate on almost a quarter acre private lot.

- Welcome home to this 2900 square feet, 4 bedroom property set back on a huge lot in desirable Blueridge.
- Features detached garage and workshop, triple paned windows, hardwood, tile, skylights, recent updated kitchen with large island and bathrooms.
- Large lower floor with great suite, nanny or in-laws possibilities.
- Close to shopping, transit, hiking, biking, skiing, golfing, Seymour Heights Elementary, and Windsor Secondary School.
- Lots of parking for your RV, cars, boats, and storage.

Taxes	\$5206.92
Lot	10142 ft ²
Type	Detached
Year Built	1953
Style	2 Storey
Bedrooms	4
Bathrooms	2
Size	2929 ft ²

For more photos and a virtual tour, please visit: www.claudiotonella.com



Claudio Tonella 604-340-8238
 Sutton Group - West Coast Realty
 #100 801 Marine Drive
 North Vancouver BC V7P 3K6