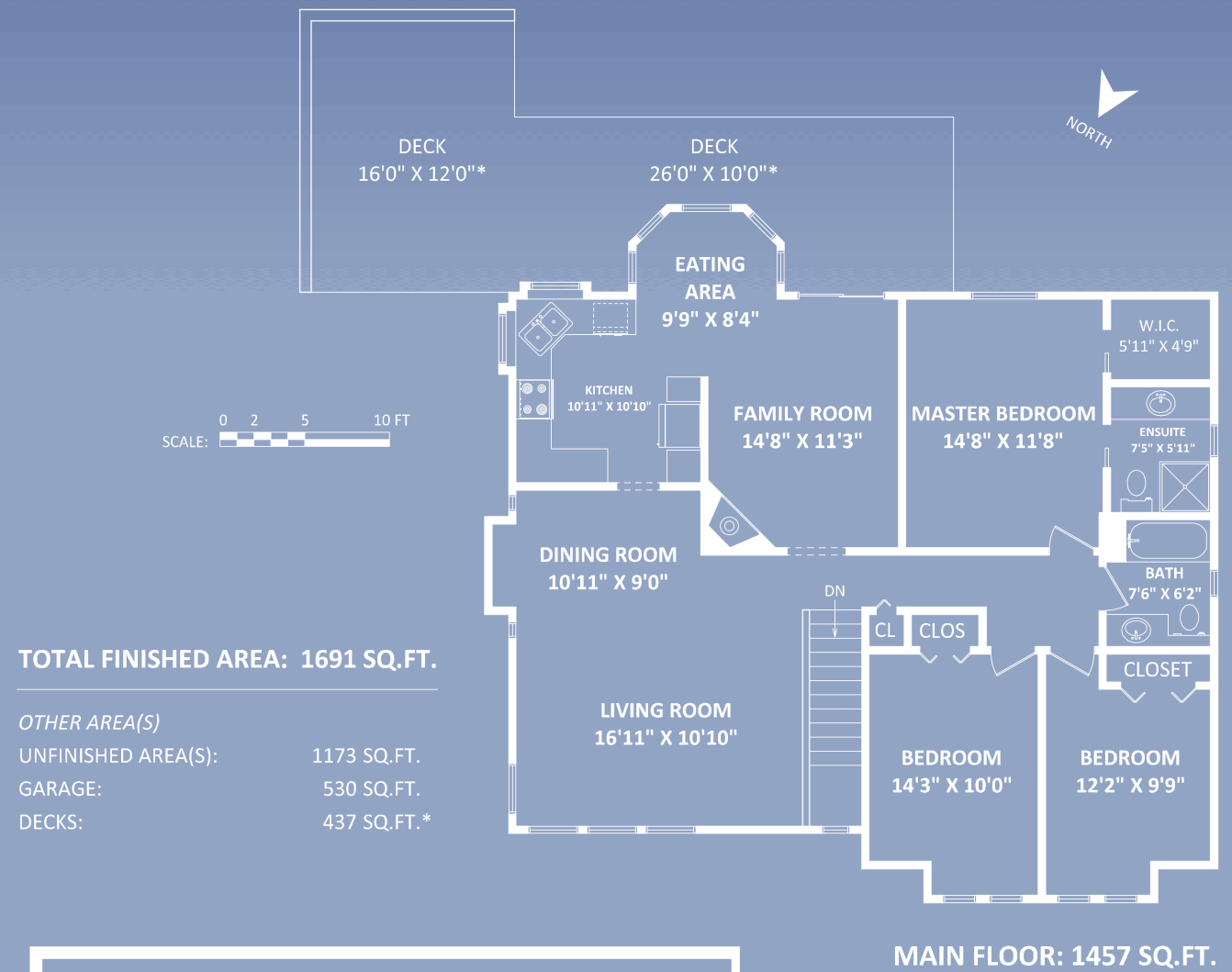
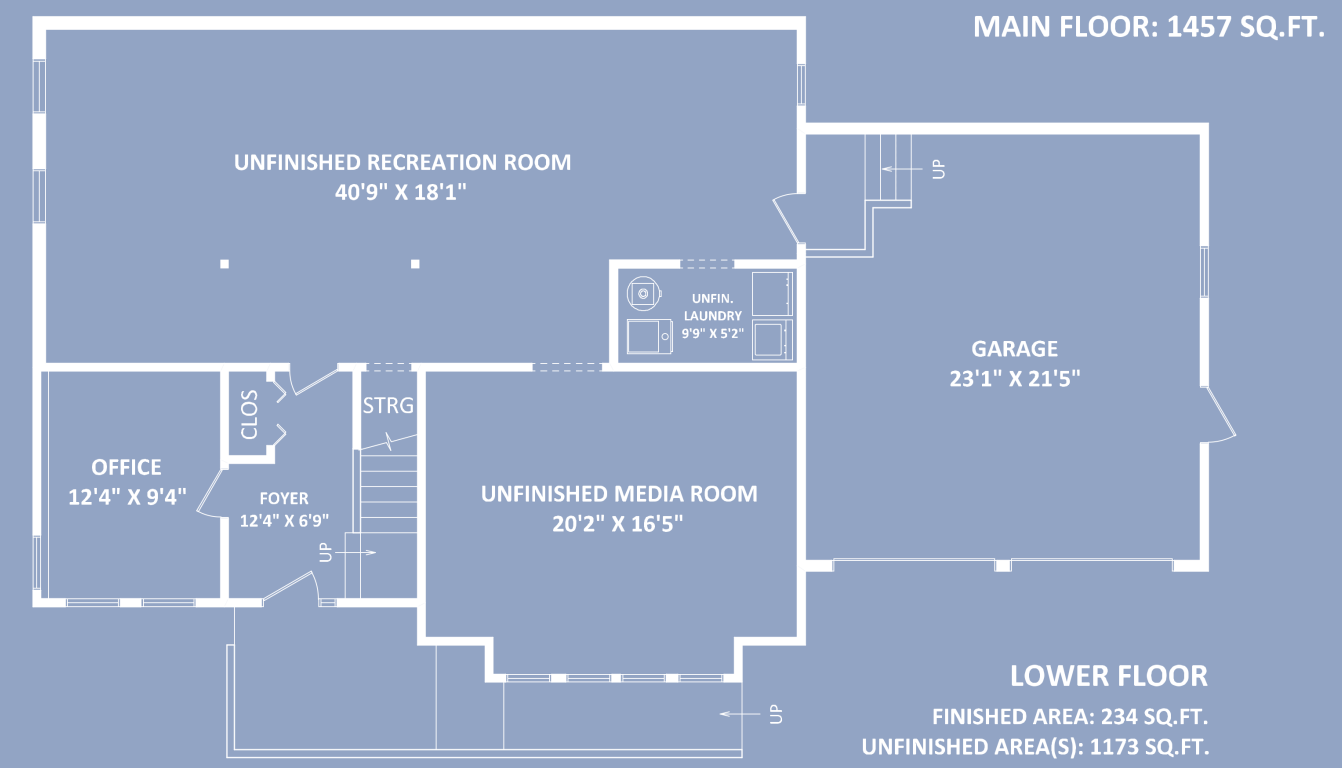


**RE/MAX**  
**Jim Dyck**  
 RE/MAX Little Oak  
 Realty  
 JimDyck.com



**TOTAL FINISHED AREA: 1691 SQ.FT.**

OTHER AREA(S)  
 UNFINISHED AREA(S): 1173 SQ.FT.  
 GARAGE: 530 SQ.FT.  
 DECKS: 437 SQ.FT.\*



**3588 McKinley Drive, Abbotsford**

This version of the floorplan is for marketing purposes only. Please contact Jim Dyck for specifications: 604-859-2341

This communication is not intended to cause or induce breach of an existing agency agreement.







## 3588 McKinley Drive, Abbotsford

It's just what you are looking for! Take a look at this 2864 sq ft home on a large 12,979 sq ft lot in East Abbotsford. This home features 3 bedrooms and 2 bathrooms upstairs, an office downstairs, plus an unfinished basement awaiting your ideas. Other features include a spacious living room with valley views, family room with gas fireplace, 3 piece ensuite and walk in closet in the master bedroom, and a double garage. You'll love the large private lot and the panoramic views of the valley. Close to public schools of all levels and next door to McKinley Park.

Lot	12, 979 ft <sup>2</sup>
Type	Residential Detached
Age	26 years
Style	Basement Entry
Bedrooms	3
Bathrooms	2
Size	2,864 ft <sup>2</sup>

For more photos and a virtual tour, please visit: [www.jimdyck.com](http://www.jimdyck.com)



Jim Dyck 604-859-2341 RE/MAX Little Oak Realty #9 2630 Bourquin Cres. W, Abbotsford BC V2S 5N7