

1930 135A Street, South Surrey



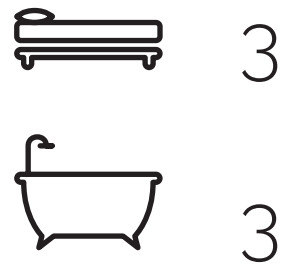
Amble Greene



1930 135A Street, South Surrey

Great family home & future building lot with basement potential. Nicely updated 2,315 sq. ft. split level plan, sunken living room, updated gas fireplace open to dining area. Updated oak kitchen, granite counter tops, stainless appliances, opens to expansive cedar deck. Lower level family room, gas fireplace, tile flooring, opens to 2nd expansive concrete deck. 2 piece powder/laundry, office with outside access, mud room. Upper level 3 bedrooms, includes master bedroom, walk in closet, 3 piece ensuite, 2 secondary bedrooms, laminate floor, both with French doors open into games room, with skylights. Updated asphalt roof, gutters, furnace, fresh paint, carpeting. 12,632 sq. ft. lot, private rear hedged yard.

DETAILS



Property Type:	Residential Detached
Type of Dwelling:	2 Storey, 3 Level Split
Year Built:	1980
Living Area:	2315 sq. ft.
Lot Size:	12632 sq. ft.
List Price:	\$1,595,000

The Walker Real Estate Team
 Homelife Benchmark Realty Corp. – Surrey 152nd Street Branch
 #1 - 1920 - 152nd Street, Surrey, BC V4A 4N6
 Tel. 604-531-1111



THE WALKER REAL ESTATE TEAM
 We Run On Experience. **604 889 5004**

21-Year Emerald Master Medallion Winners, FVRB
 25 Years of Building and Development Background
 16 Years Mortgage Experience

THE TEAM
 Dave Walker
 Cindy Walker
 Amanda Walker
 "中文服务" Iris Zhang

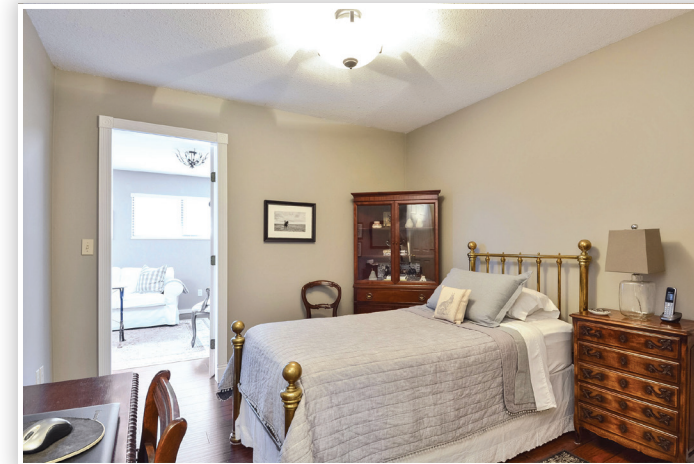
Service in Mandarin: 778 834 6660 EMAIL info@WalkerRealEstate.ca

Please contact Dave and Cindy Walker at 604.889.5004, for specifications.

This communication is not intended to cause or induce breach of an existing agency agreement.



Great Family Home & Future Building Lot With Basement Potential



Contact Dave and Cindy Walker at 604.889.5004
HomeLife Benchmark Realty Corp.

Live Video Tours
web site: www.WalkerRealEstate.ca