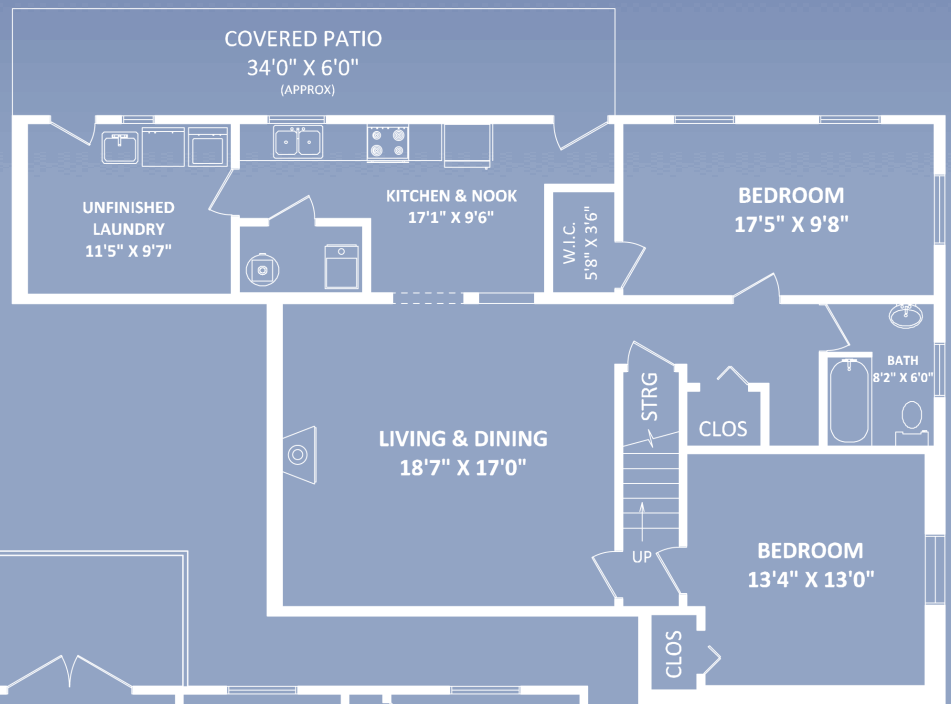
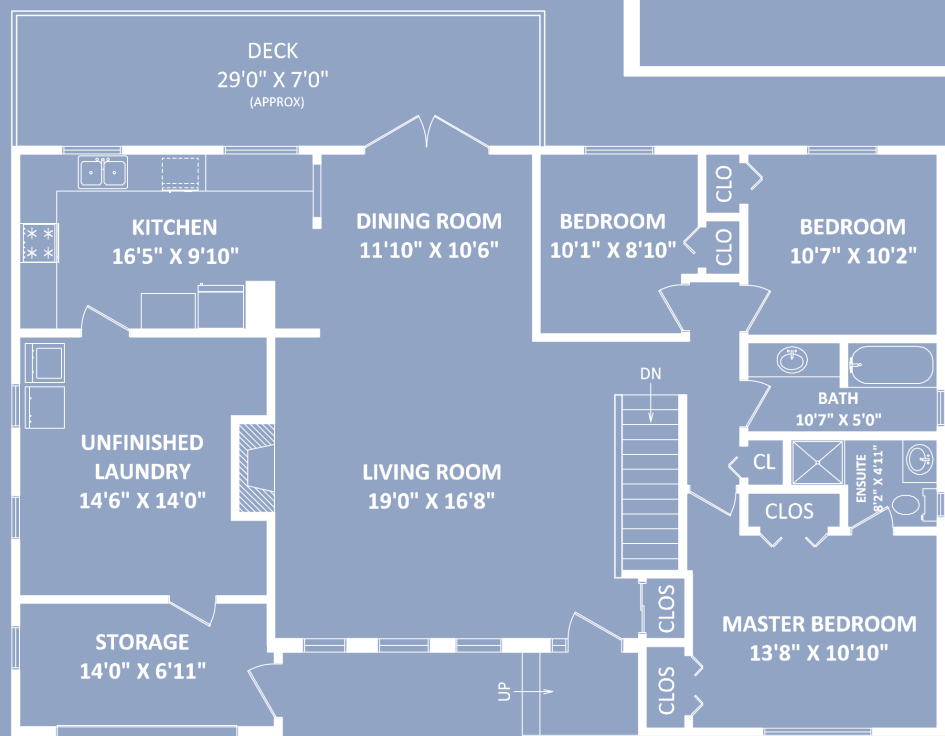


RE/MAX
Jim Dyck
 RE/MAX Little Oak
 Realty

JimDyck.com



LOWER FLOOR: 1166 SQ.FT.



TOTAL FINISHED AREA: 2470 SQ.FT.

OTHER AREA(S)
 UNFINISHED AREA(S): 452 SQ.FT.
 DECK: 226 SQ.FT.*
 COVERED PATIO: 200 SQ.FT.*



MAIN FLOOR: 1304 SQ.FT.



35366 Rockwell Drive, Abbotsford

This version of the floorplan is for marketing purposes only. Please contact Jim Dyck for specifications: 604-859-2341

This communication is not intended to cause or induce breach of an existing agency agreement.





35366 Rockwell Drive, Abbotsford

It's just what you are looking for! Take a look at this 5 bedroom, 3 bathroom 2470 sq ft home on a large 7224 sq ft lot in East Abbotsford. This home features 3 bedrooms up, 1 bedroom down, plus a 1 bedroom legal suite. Other features include 2 gas fireplaces, 3 piece ensuite in the master bedroom, garage (currently converted to storage), and a large lot with lane access for the suite and room for RV parking. In a great school catchment for Mountain Elementary, William A Fraser Middle, and Yale secondary. Close to shopping and parks and with a Mount Baker View.



Lot	7224 ft ²
Taxes	\$3755.56
Type	Residential Detached
Year Built	1981
Style	Rancher w/Bsmt.
Bedrooms	5
Bathrooms	3
Size	2470 ft ²

For more photos and a virtual tour, please visit: www.jimdyck.com