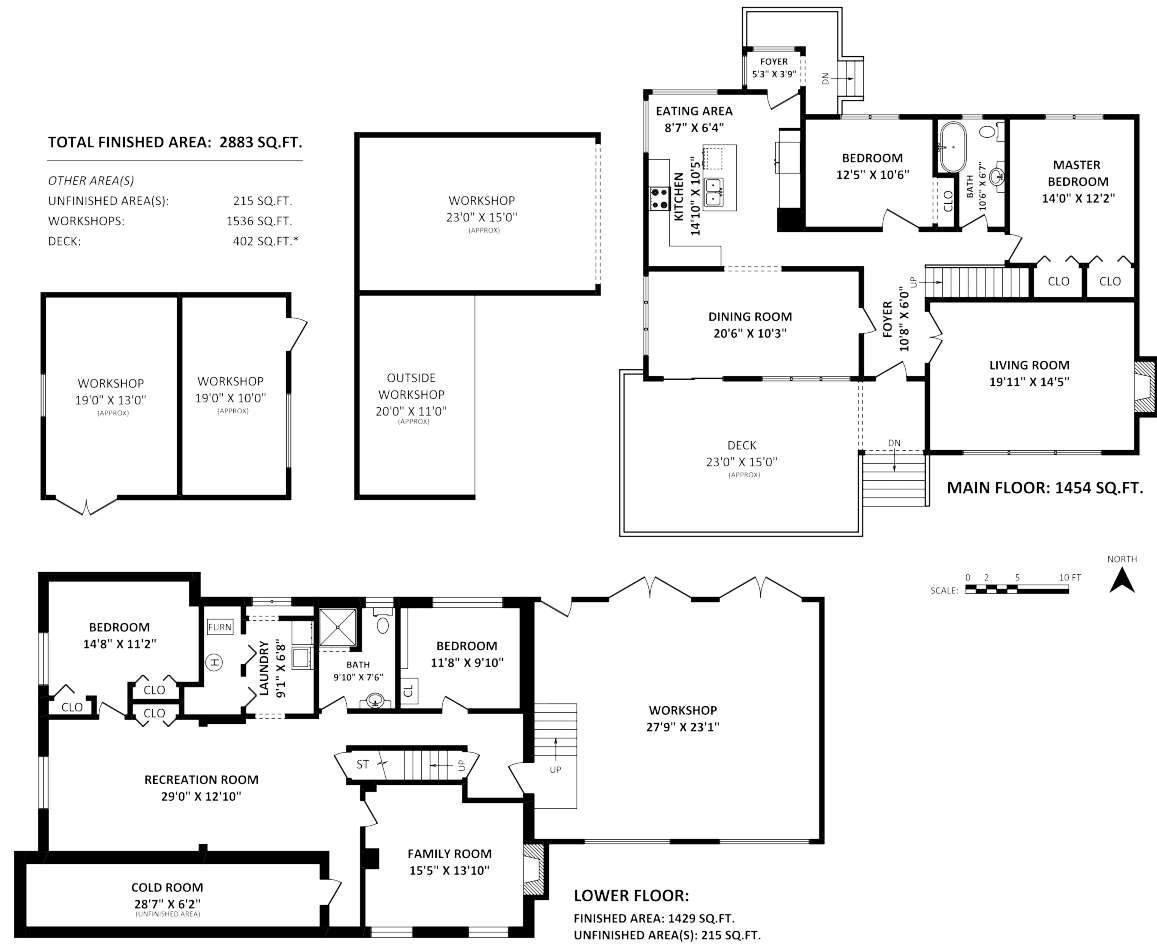


26491 98 AVENUE • MAPLE RIDGE



**Justin Hennessey**  
 Personal Real Estate Corporation  
 604-805-4669  
 justinhennessey.com



26491 98 AVENUE • MAPLE RIDGE



Justin Hennessey Personal Real Estate Corporation  
 #1 Individual RE/MAX Realtor in Maple Ridge & Pitt Meadows for 2015  
 MLS Presidents Club - top 1% Greater Vancouver Real Estate Board  
 RE/MAX Chairman's Club • RE/MAX Lifetime Achievement



Please contact Justin Hennessey, 604-805-4669, for specifications.

This communication is not intended to cause or induce breach of an existing agency agreement.



RE/MAX Lifestyles Realty 22308 Dewdney Trunk Road, Maple Ridge, BC V2X 3J2 • Each office independently owned and operated





4



2

**Details**

Property Type: Residential Detached  
 Style of Dwelling: Rancher w/ Bsmt., Split Entry  
 Year Built: 1962  
 Living Area: 2883 sq. ft.  
 Lot: 2.95 acres.

**Description**

Nestled up on a hill overlooking the Fraser River, this beautiful 2.95 acre property captivates you the moment you drive up. Enter through the spacious foyer, and the home greets you with a cozy living room, a spacious dining area & updated kitchen, complete with granite countertops & cork flooring. Perfect for entertaining! Not to mention the sizable front patio, where summer BBQ's await! Check out the freshly renovated basement, that could be an extra space for an office, playroom, or guests to stay. With a large garage workshop & two additional outbuildings, there's plenty of room to store your toys! Don't miss the easy access to Lougheed Hwy, making commuting a breeze!

