



FOR APPOINTMENT PLEASE CONTACT:
Carol Kerman
cell: 604 834 7003
e-mail: ckerman@sutton.com



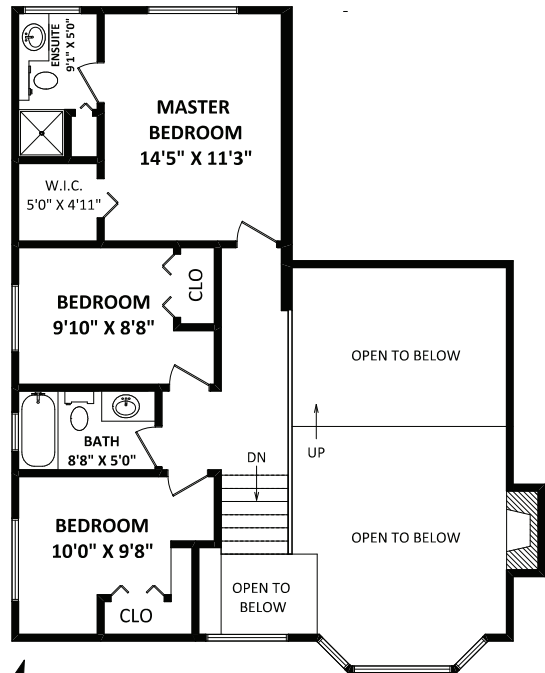
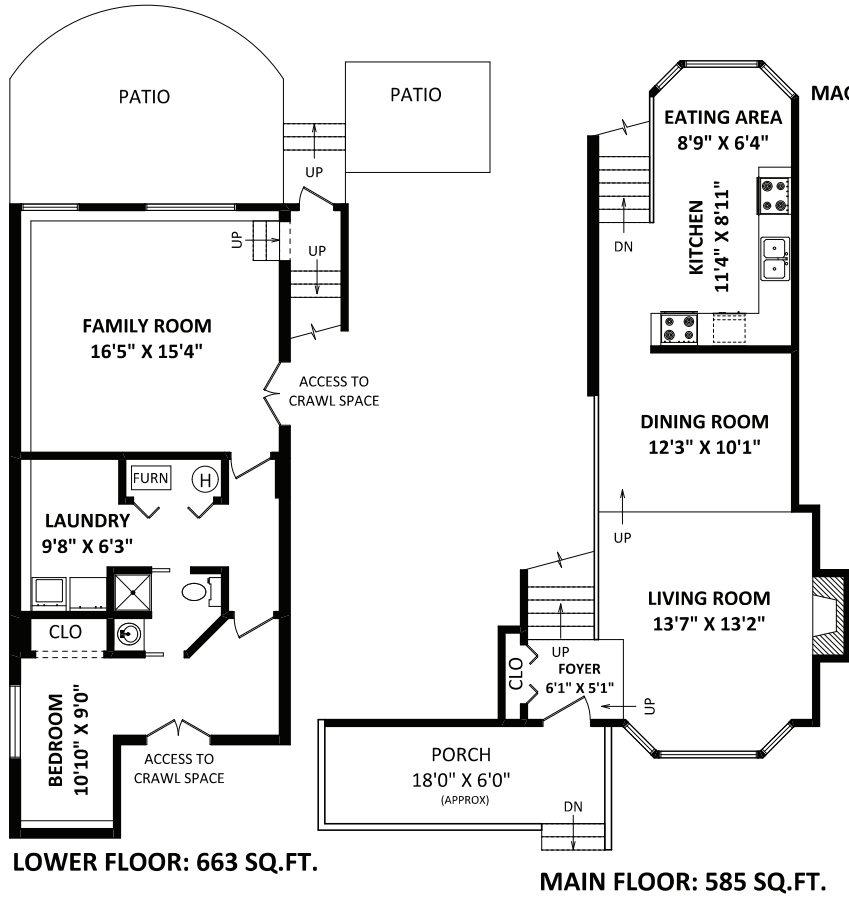
852 Nairn Court,
North Vancouver, BC

MAGGIE CHAN & CAROL KERMAN

Sutton Group West Coast
North Vancouver
Cell: 604-961-2266 (Maggie)
Cell: 604-834-7003 (Carol)
Office: 604-986-9321
maggiechan@shaw.ca
www.maggiechan.com

TOTAL FINISHED AREA: 1922 SQ.FT.

OTHER AREA(S)
PORCH: 127 SQ.FT.*
PATIO: 300 SQ.FT.*
CRAWL SPACE STORAGE: 350 SQ.FT.*



UPPER FLOOR: 674 SQ.FT.

FLOOR PLAN BY: [SEPTEMBER 27, 2017]
SEE VIRTUAL
TEL: 604-575-1244
www.seevirtual360.com

DISCLAIMER:
1. MEASUREMENTS ARE FOR PROMOTIONAL USE ONLY & ARE NOT INTENDED FOR CONSTRUCTION USE.
ROOM DIMENSIONS ARE APPROXIMATE. MEASUREMENTS & CALCULATIONS FOR FINISHED AREAS ARE E&O INSURED.
2. FINISHED AREAS ARE ENCLOSED AREAS IN A HOUSE THAT ARE SUITABLE FOR YEAR-ROUND USE.
EMBEDDING WALLS, FLOORS, AND CEILINGS THAT ARE SIMILAR TO THE REST OF THE HOUSE. (ANSI Z765-2003)
3. THIS FLOOR PLAN MAY ONLY BE REPRODUCED WITH PERMISSION OF THE REALTOR(S) ON THIS FLOOR PLAN.
4. ANY MEASUREMENT WITH AN ASTERISK (*) OR (APPROX) ARE APPROXIMATE AND FOR ILLUSTRATION PURPOSES ONLY AND ARE NOT E&O INSURED.

SCALE: 0 2 5 10 FT

NORTH



MAGGIE CHAN

陳于青一

專業地產顧問 精通國、粵、滬、英語

✉ Maggiechan@shaw.ca

☎ 604.961.2266 or 604.990.5577

🏆 AWARD WINNING REALTOR

Your friends and family have been recommending since 1983.



852 Nairn Court • North Vancouver

Please contact Maggie Chan, 604-961-2266, for specifications.

This communication is not intended to cause or induce breach of an existing agency agreement.



Sutton Group-West Coast Realty
#100 - 889 Harbourside Drive, North Vancouver, BC V7P 3S1
Tel. 604-986-9321



This is an immaculate home! It's been lovingly cared for and beautifully updated by these owners of 18 years and now it is ready for you. It is located on a quiet cul-de-sac, full of friendly families, in this highly desirable, and safe, neighbourhood in North Vancouver. You will love that you are close to parks, hiking and biking trails, tennis courts, community garden, and great schools. You will be within walking distance to a recreational center, library, as well as excellent restaurants and shopping opportunities. Imagine being just minutes away from the popular and quaint village of Deep Cove and the scenic shores of Cates Park.

This perfect split level vaulted ceiling design, with fully fenced backyard, is the ideal one for you and your family! Updates include the new kitchen with custom-built cherry wood cabinets, appliances, heated Italian porcelain tiles covering the main floor, top of the line carpeting on the upper floor, custom California Closet built in study and master bedroom closet, back patio, front porch, sparkling new windows, and recently painted ceilings and walls. Tons of money spent here! The expansive back patio and covered front porch makes outdoor living a breeze! Move in and enjoy this carefree home for many, many years to come. Total 4 bedrooms, 3 full baths, and ample room for children, nanny or guests. Additional bonus is the approx. 350 sq.ft. of storage under the main level. Act now before this gem is sold!!

Close by amenities:

- Parkgate Shopping Centre, 3685 Mount Seymour Parkway;
- Public Library, 3675 Banff Court;
- Ron Andrew Community Rec. Centre, 931 Lytton Street;
- Mount Seymour Medical Clinic, 333 Seymour Blvd.;
- Sherwood Park Elementary School K-7;
- Seycove Secondary School 8-12.



AWARD WINNING REALTOR

Your friends and family have been recommending since 1983.

Maggie Chan | 604-961-2266 | maggiechan@shaw.ca