

STONEHAUS REALTY

WHERE'S YOUR NEXT HOME?



STONEHAUS  
REALTY



Pedro Gomes | 778-999-7325 | www.PedroGomes.ca

2602 Dundas Street,  
Vancouver, BC



PEDRO GOMES

Stonehaus Realty  
Cell: 778-999-7325  
pgomes@stonehausrealty.ca  
www.pedrogomes.ca



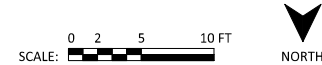
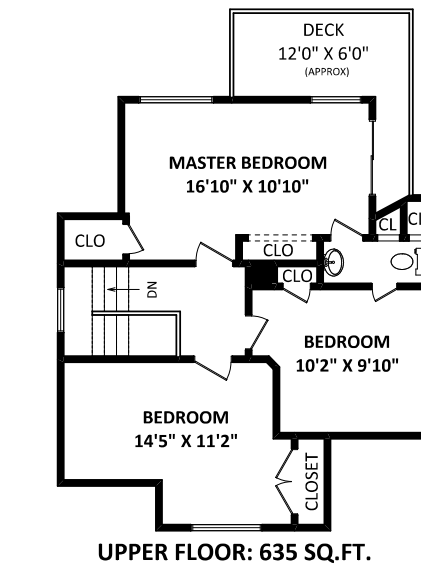
TOTAL AREA: 2827 SQ.FT.\*\*

OTHER AREA(S)

GARAGE: 715 SQ.FT.

DECKS: 243 SQ.FT.\*

\*\*INCLUDED UNFINISHED AREA 131 SQ.FT.



FLOOR PLAN BY: [SEPTEMBER 18, 2017] SEEVIRTUAL  
TEL: 604-575-1244  
www.seevirtual360.com

DISCLAIMER:  
1. MEASUREMENTS ARE FOR PROMOTIONAL USE ONLY & ARE NOT INTENDED FOR CONSTRUCTION USE. ROOM DIMENSIONS ARE APPROXIMATE. MEASUREMENTS & CALCULATIONS FOR FINISHED AREAS ARE E&O INSURED.  
2. FINISHED AREAS ARE ENCLOSED AREAS IN A HOUSE THAT ARE SUITABLE FOR YEAR-ROUND USE, EMBODYING WALLS, FLOORS, AND CEILINGS THAT ARE SIMILAR TO THE REST OF THE HOUSE. (ANSI Z765-2003)  
3. THIS FLOOR PLAN MAY ONLY BE REPRODUCED WITH PERMISSION OF THE REALTOR(S) ON THIS FLOOR PLAN.  
\* ANY MEASUREMENT WITH AN ASTERISK (\*) OR (APPROX) ARE APPROXIMATE AND FOR ILLUSTRATION PURPOSES ONLY AND ARE NOT E&O INSURED.  
4. TOTAL AREA IS NOT E&O INSURED.



2602 Dundas Street • Vancouver



Please contact Pedro Gomes, 778-999-7325, for specifications.

This communication is not intended to cause or induce breach of an existing agency agreement.



Stonehaus Realty Corp. 1126 Austin Avenue, Coquitlam, BC V3K 3P5



 6   3	<b>Details</b>	<b>Description</b>	
	Property Type:	Residential Detached	Gorgeous 3 level character home w/ mtn and water views! Enchanting extra wide corner lot completely hedged at a traffic calmed street. Bright & spacious 4 bdrms + 2 bdrms self-contained suite & 3 baths total. Tastefully renovated gourmet kitchen, baths, suite & the list goes on. Features quartz counters, s/s appl., 5 burner gas stove, gas F/P, antibacterial Schock sink, California shutters, refinished h/w floors throughout & exposed bricks/beams below. Sunny south deck & balcony. Large & private fenced yard w/ garden boxes. Triple garage. Central location, walkable to schools, parks, cafes and stores. Easy access to Hwy 1 & 10 mins car or 20 mins bike/bus to DT.
	Styl:	2 Storey w/Bsmt	
	Year Built:	1929	
	Living Area:	2,827 sq. ft.	
	Lot Area:	4,022 sq. ft.	
Gross taxes:	\$5120.44		
List Price:	\$1,748,800		

