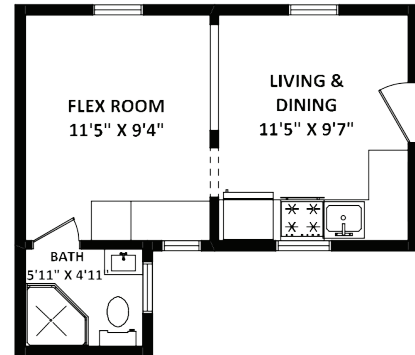
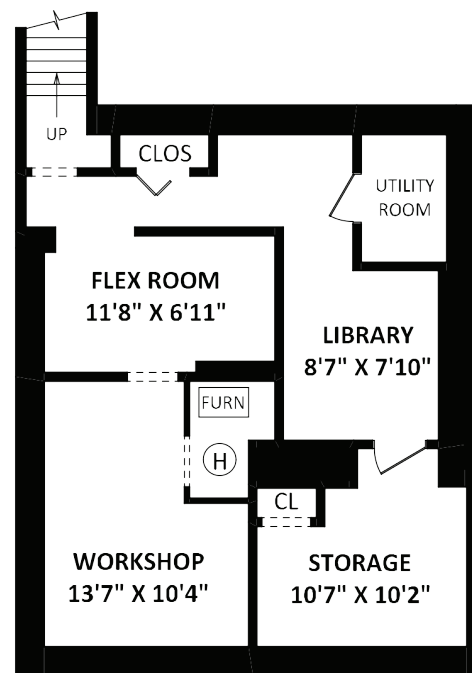


# 859 Maple Street • White Rock

# 859 Maple Street • White Rock



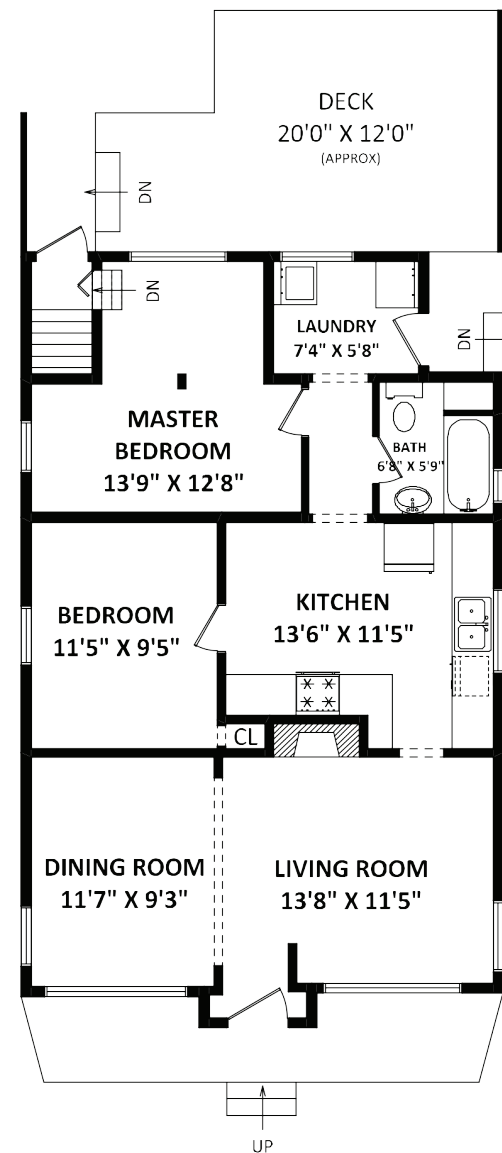
**COACH HOUSE: 289 SQ.FT.**



**BASEMENT: 675 SQ.FT.**  
CEILING HEIGHT: 6'4"

**TOTAL FLOOR AREA: 1864 SQ.FT.**  
MAIN HOUSE: 1575 SQ.FT.  
COACH HOUSE: 289 SQ.FT.

**OTHER AREA(S)**  
DECK: 219 SQ.FT.\*



**MAIN FLOOR: 900 SQ.FT.**



## MARKETING 604 GROUP

MARKETING604.COM

**Jon Moss**

604-614-5000

jon@marketing604.com • jon@jonmoss.com



Please contact Jon Moss, 604-614-5000 for specifications.



This communication is not intended to cause or induce breach of an existing agency agreement.



**HomeLife Benchmark Realty Corp. (White Rock) #1-1920 152nd Street, Surrey, BC V4A 4N6 604.531.1111**





Details		Description
	3	Darling Historic Beach Cottage, seconds from beach. Features remodelled kitch., new hwd flr. Greatrm concept entry. Cozy F/P in great rm. Low bsmt, 90% fin., needs crpts. Excel hobbyiest area. NOTE: legal, non-conform.cottage in behind.
	Lot: 33x125	
	Type of Dwelling: Single Family	
	Living Area: 1,864 sq. ft.	
	Frontage: 33 ft.	
	2	
	Exclusive offering at \$1048,000	
	All offers presented on Sept 30 2017	

