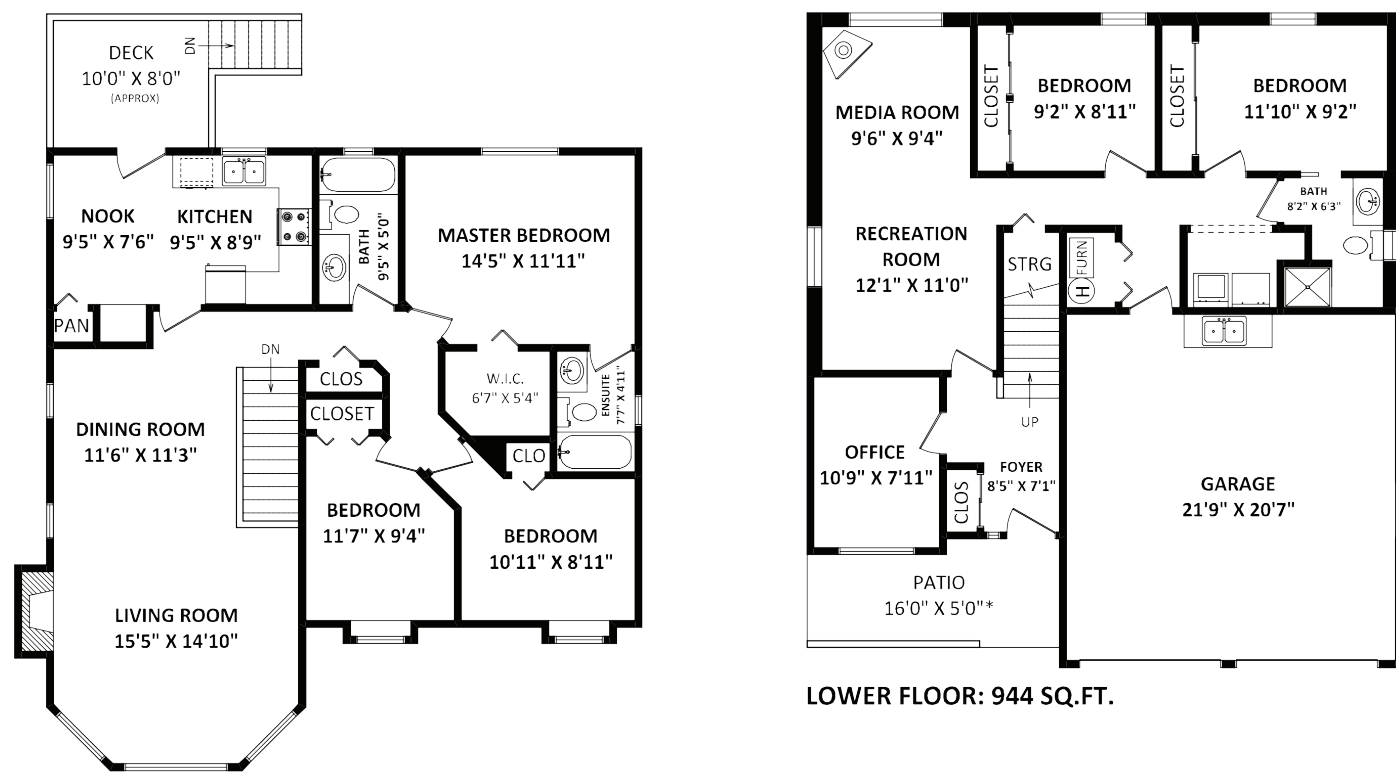




Welcome To

34623 Sandon Drive, Abbotsford



TOTAL FINISHED AREA: 2197 SQ.FT.

OTHER AREA(S)
 GARAGE: 471 SQ.FT.
 DECK: 90 SQ.FT.*
 PATIO: 100 SQ.FT.*



Jeffrey Klassen

604-615-6893
 Klassendueck@gmail.com
 www.JeffreyKlassen.ca

Please contact Jeffrey Klassen for specifications: 604-615-6893
 This communication is not intended to cause or induce breach of an existing agency agreement.
 This information while deemed to be correct, is not guaranteed.



RE/MAX LITTLE OAK REALTY
 #9 2630 Bourquin Cres W. Abbotsford BC





34623 Sandon Drive, Abbotsford

A wonderful family home in the McMillan area. Just blocks from all levels of schools, shopping, Rec Centre and Parks. Fully finished basement, 2 gas Fireplaces, 5 bedrooms with a gorgeous fenced backyard. Home kept in great shape, updated roof and hot water tank. Air conditioning and built in lawn sprinkler system.



Size	2,197 ft ²
Frontage	60 ft
Year Built	1992
Style	Basement Entry
Bedrooms	5
Bathrooms	3
Taxes	\$3,775.15

For more photos and a virtual tour, please visit: www.JeffreyKlassen.ca



RE/MAX LITTLE OAK REALTY
 #9 2630 Bourquin Cres W. Abbotsford BC V2S 5N7
 Independently Owned and Operated

