

Welcome To

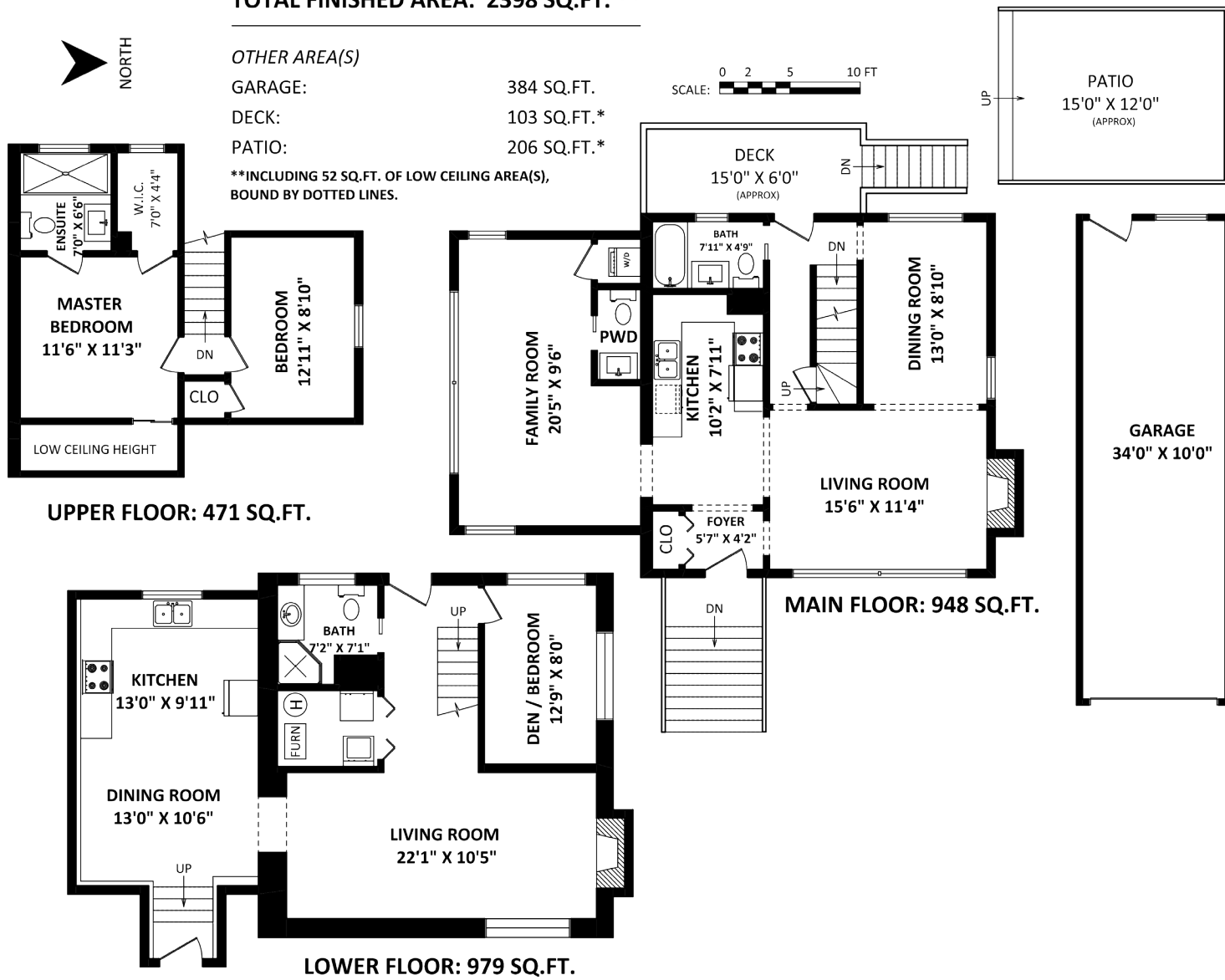
12085 Blakey Road, Pitt Meadows
3 Level Home!

TOTAL FINISHED AREA: 2398 SQ.FT. **

OTHER AREA(S)

GARAGE: 384 SQ.FT.
DECK: 103 SQ.FT.*
PATIO: 206 SQ.FT.*

**INCLUDING 52 SQ.FT. OF LOW CEILING AREA(S),
BOUND BY DOTTED LINES.



This version of the floorplan is for marketing purposes only.
Please contact Dan or Sue for specifications.

This publication is not intended to cause or induce breach of an existing agency agreement.

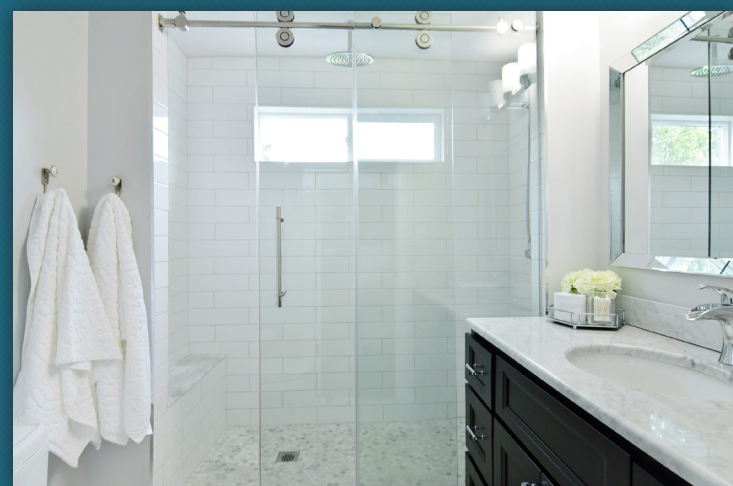
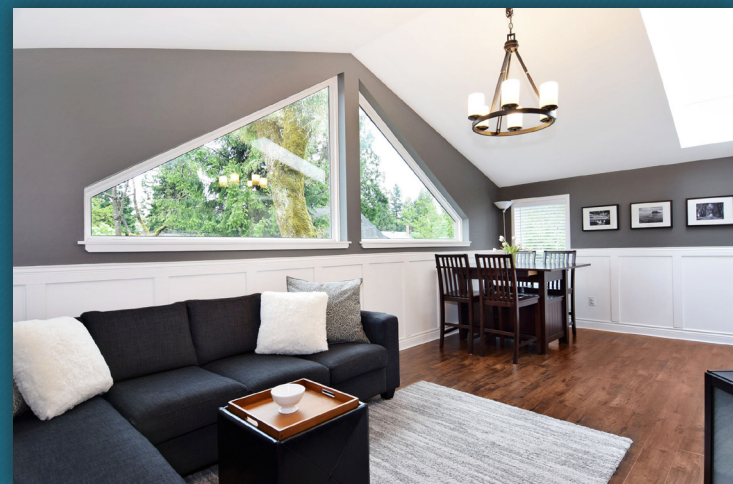



DOING IT RIGHT
For You!

www.lowermainlandliving.com
www.facebook.com/lmliving

Dan Bennett
Associate Broker
604.250.5227

Sue Bennett
Sales Representative
604.250.4424



12085 Blakey Road, Pitt Meadows

Charming, 2398 sq ft, 3 level home in the heart of Pitt Meadows. Formal living & dining room, 3 bdrms, 3 1/2 baths, rec rm & large new 620 sq.ft. addition on 2 levels. Galley style kitchen with white shaker cabinets & black appliances. Classic detailing throughout with laminate over original oak floors, wainscoting, crown mouldings, 2 fireplaces, Recently updated with new roof, vinyl windows, dark finish oak flooring & updated electrical, all permitted. Situated on a large fenced lot with newer tandem, 34 x 10, detached garage. Potential main floor bedroom. Lovely, unique home with lots of living options - walking distance to Elementary & Secondary schools, West Coast Express & Meadow Vale Shopping Centre.

Lot	7200.60 ft. ²
Frontage	66 ft
Type	Residential Detached
Year Built	1948
Style	2 Storey w/Bsmt.
Bedrooms	3
Bathrooms	4
Size	2,398 ft. ²



Dan Bennett • 604.250.5227
HomeLife Benchmark Realty Corp. Walnut Grove
604.888.7424 #201 20999 88th Ave, Langley BC V1M 2C9

Sue Bennett • 604.250.4424
HomeLife Benchmark Realty Corp. Langley
604.530.4141 6323 197th Street Langley, BC V2Y 1K8

