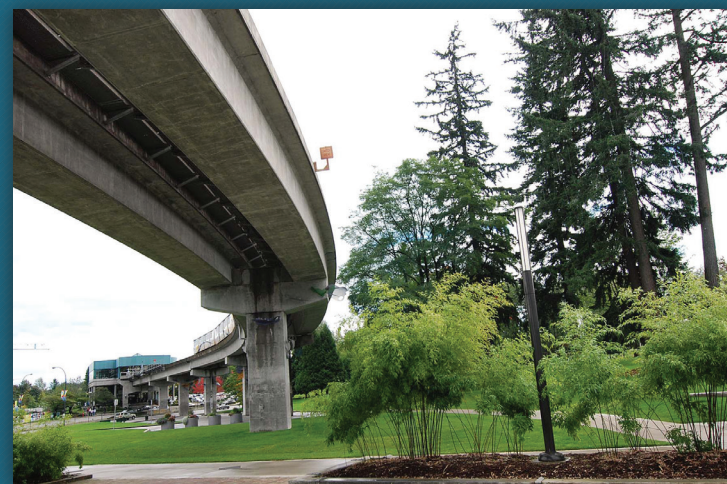




*Welcome To*

*#105 9655 King George Blvd, Surrey*  
*Modern Living At Its Best!*



Please contact Dan or Kendra or Sue for specifications.

This publication is not intended to cause or induce breach of an existing agency agreement.



  
**DOING IT RIGHT**  
*For You!*

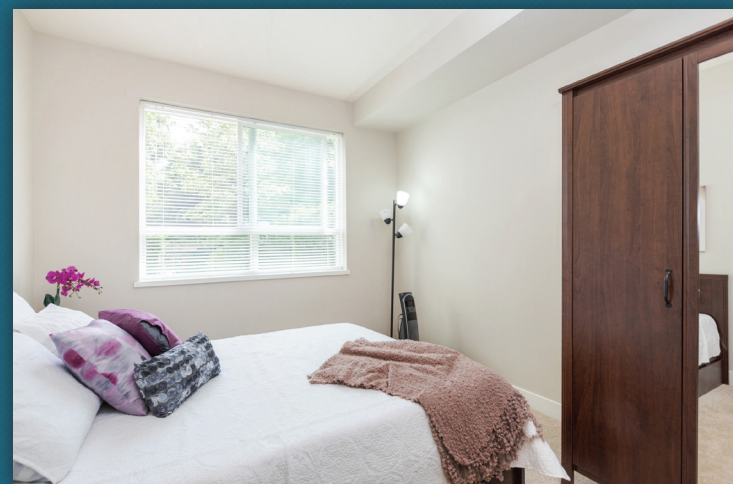
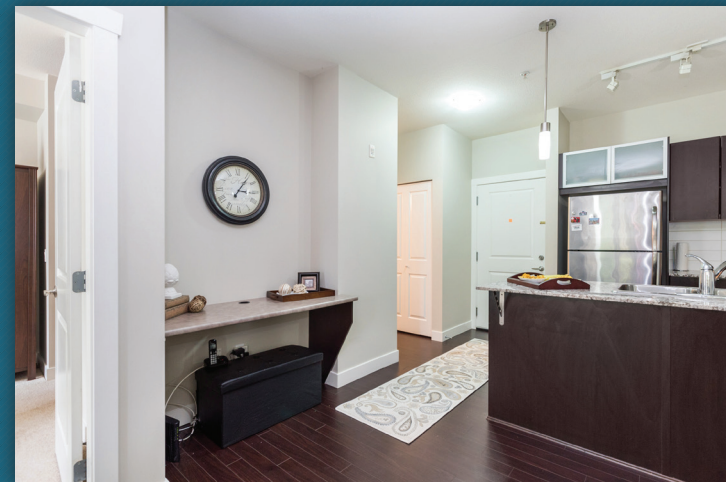
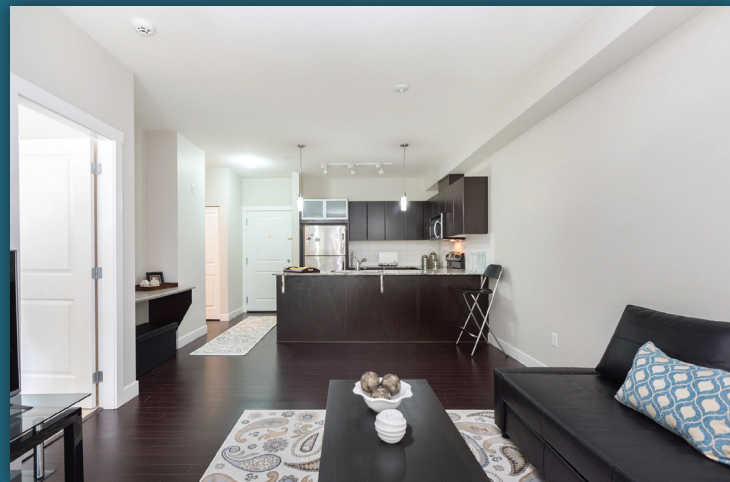
[www.lowermainlandliving.com](http://www.lowermainlandliving.com)  
[www.facebook.com/lmliving](https://www.facebook.com/lmliving)

Dan Bennett  
 Associate Broker  
 604.250.5227

Sue Bennett  
 Sales Representative  
 604.250.4424

Kendra Andreassen  
 Personal Real Estate Corporation  
 604.312.4125





## #105 9655 King George Blvd, Surrey

The Gruv, modern living at it's best and centrally located close to skytrain, SFU campus, hospital & shopping. No need to have a car at this location as everything is at your finger tips. This well appointed one bedroom garden condo has a large private patio and is an open concept unit that feels much larger then it. This bright unit has SS appliances, granite counters, new carpet, blinds, recent paint, large walk in closet and an alarm system. Unit doesn't face King George and is very quiet. You can cancel your gym membership as this building has a gym, lounge and party room. One secured underground parking stall with unit.

Strata Fee	\$197.69
Type	Condo
Year Built	2009
Style	Inside Unit
Bedrooms	1
Bathrooms	1
Size	609 ft. <sup>2</sup>

For more photos and a virtual tour, please visit: [www.LowerMainlandLiving.com](http://www.LowerMainlandLiving.com)



HomeLife Benchmark Realty Corp. Walnut Grove  
604.888.7424 #201 20999 88<sup>th</sup> Ave, Langley BC V1M 2C9

