



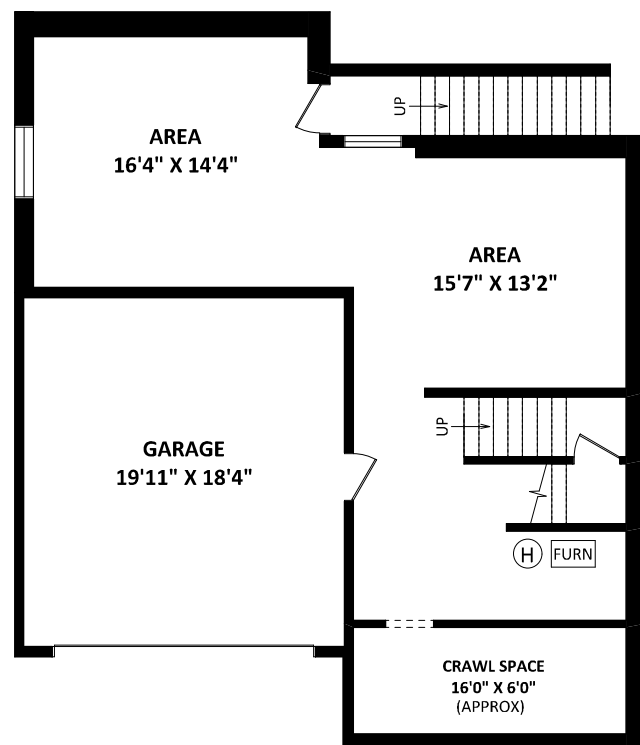
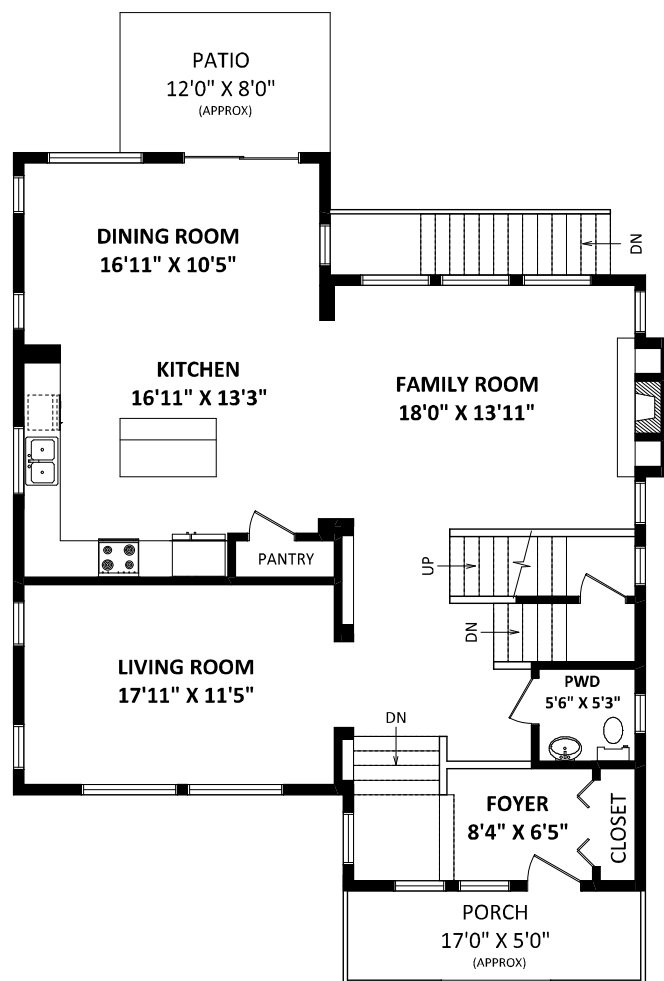
17797 70 Avenue,
Surrey, BC



B-JE TAN
Luxmore Realty
 Phone: 604-790-1111
 Cell: 604-783-2447
 bjetan.homes@gmail.com
 www.luxmorerealty.com

TOTAL FINISHED AREA: 2364 SQ.FT.

OTHER AREA(S)
 UNFINISHED AREA(S): 784 SQ.FT.
 GARAGE: 386 SQ.FT.
 CRAWL SPACE: 122 SQ.FT.*
 PORCH: 92 SQ.FT.*
 PATIO: 100 SQ.FT.*



604-783-2447
 bjetan.homes@gmail.com

Bold with POSSIBILITIES **J**oyed with OPPORTUNITIES **E**thical with RESPONSIBILITIES
Transparent with DEALINGS **A**ware of PROCEEDINGS **N**oted for HIGH MORAL BEARINGS



Please contact Bje Tan, 604-783-2447, for specifications.

This communication is not intended to cause or induce breach of an existing agency agreement.



Luxmore Group Realty Ltd.
 101-5811 Cooney Road, Richmond BC V6X 3M1
 Office Phone 604-790-1111
 www.luxmorerealty.com



Saddle Creek at Provinceton by Morningstar Homes, a Polygon Associate. Welcome guests for a quiet chat at the receiving room or show them the welcoming great room that awaits family and friends. The open concept is ideal for entertaining, easy access to the rear patio for private BBQ and where one can enjoy the peaceful view of the sunset. The master bedroom has a vaulted ceiling and large walk-in closet. The unfinished basement has a potential for mortgage helper with private access or finish up the entire area to create additional rooms or recreation area for the family. A place to call your home!

Bedrooms:	3	Floor space:	3148 sq. ft.
Bathrooms:	3	Land Size:	4090 sq. ft.
Building Type:	Detached House	Year Built:	2010



604-783-2447 • bjetan.homes@gmail.com

Bold with POSSIBILITIES **J**oyed with OPPORTUNITIES **E**thical with RESPONSIBILITIES
Transparent with DEALINGS **A**ware of PROCEEDINGS **N**oted for HIGH MORAL BEARINGS