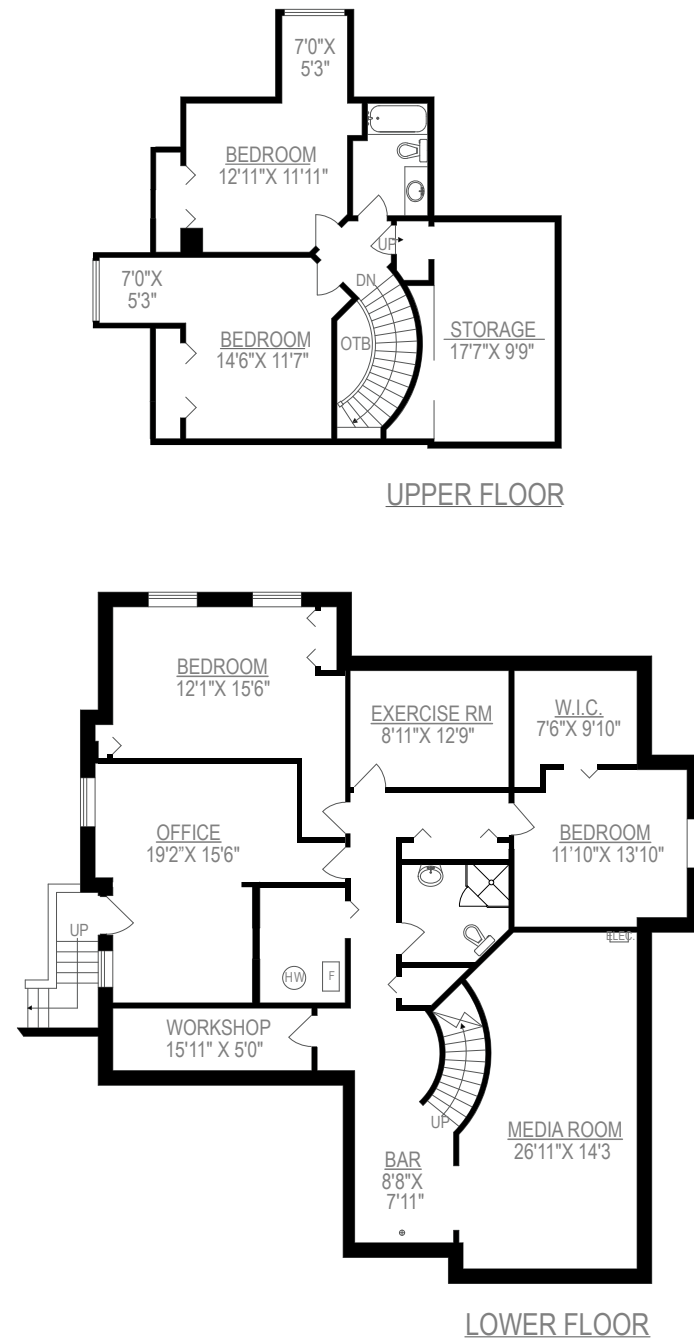
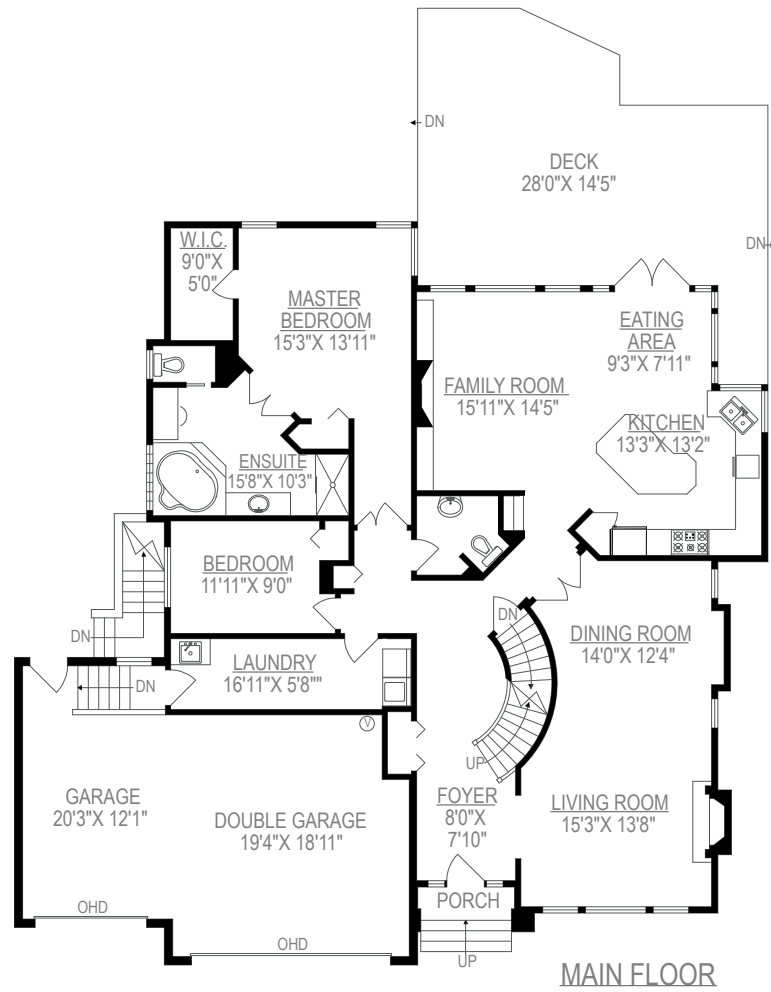


3368 CANTERBURY DRIVE



*UPPER FLOOR	859 SQ.FT.
MAIN FLOOR	2090 SQ.FT.
LOWER FLOOR	1993 SQ.FT.
FINISHED AREA	4942 SQ.FT.
UNFINISHED	80 SQ.FT.
TOTAL AREA	5022 SQ.FT.

GARAGE	644 SQ.FT.
DECK	546 SQ.FT.

*Includes limited ceiling height in storage area.

Features

Bedrooms:	6	Style:	Detached	Floor Space:	5022 sqft
Bathrooms:	4	Built in:	1996	Parking Type:	Garage
Property Type:	Single Family	Storeys:	3	Basement Type:	Full
Building Type:	House	Land Size:	13166 sqft	Fireplace:	2

Please contact Maureen Fritz, 604-541-4888, for specifications.

This communication is not intended to cause or induce breach of an existing agency agreement.



3368 CANTERBURY DRIVE

MORGAN CREEK Executive 5022 sf luxury home backing on protected green space. Large private south facing 13,166sf lot. This home has been completely renovated and beautifully maintained with brand new hardwood flooring and carpeting.

Large gourmet kitchen with pro stainless steel appliances and quartzite countertops open to landscaped private backyard. Entertainment sized rooms with open plan layout and spacious master suite on the main.

Upstairs features 2 large bedrooms and bonus storage. Lower level has media room, office, gym, wine storage, and 2 more bedrooms. Huge triple garage for your extra vehicle or golf cart.

Close to Morgan Creek golf club, Southridge private school, Morgan Elementary and shopping/restaurants.

For more photos and information, please visit us online at www.maureenfritz.ca



Maureen Fritz

RE/MAX Colonial Pacific Realty

PHONE (604) 541-4888

EMAIL maureenfritz@remax.net

WEB www.maureenfritz.ca

