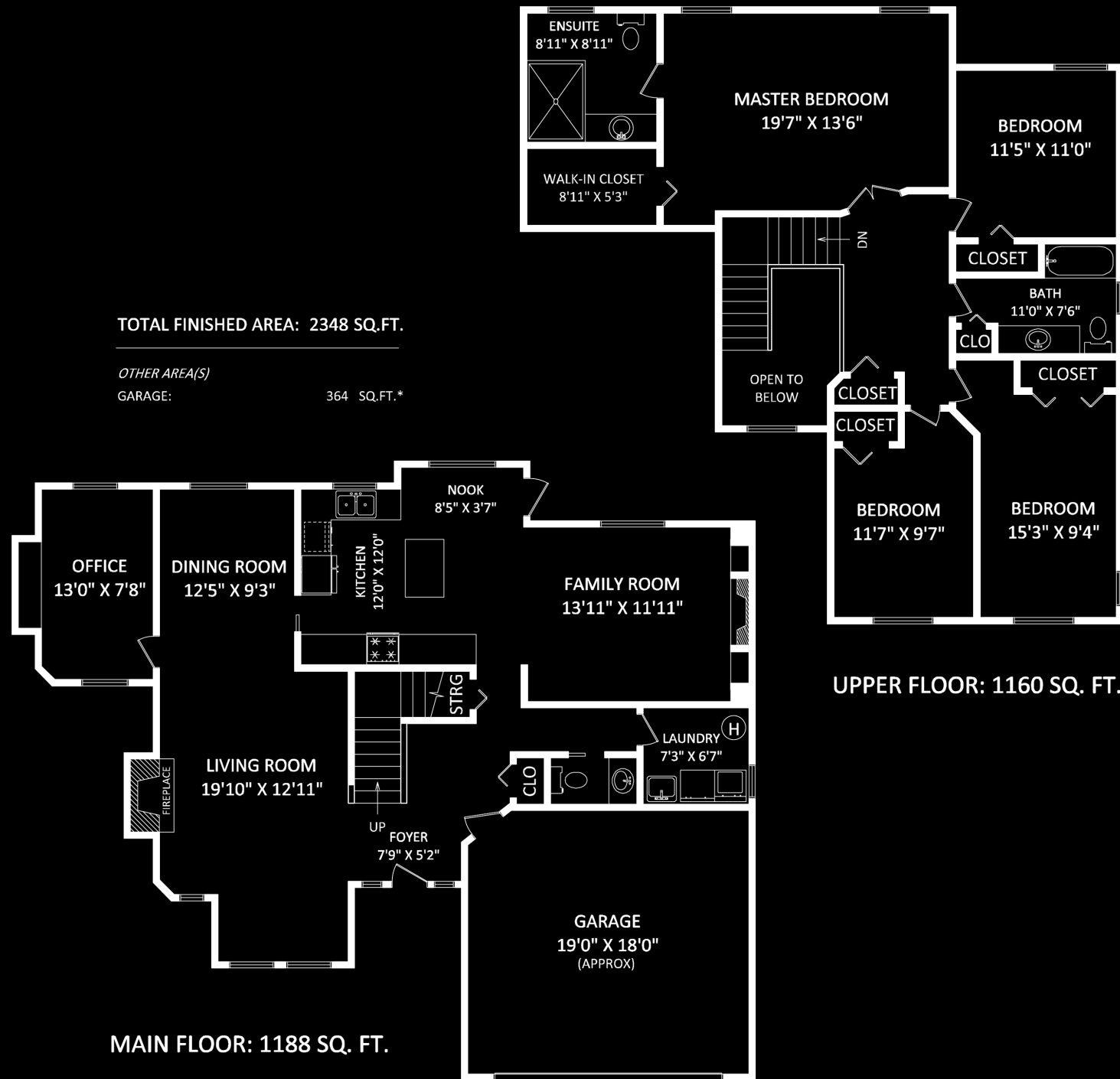


Welcome To

18636 64A Ave, Surrey



TOTAL FINISHED AREA: 2348 SQ.FT.

OTHER AREA(S)
GARAGE: 364 SQ.FT.*



SCALE: 0 2 5 10 FT



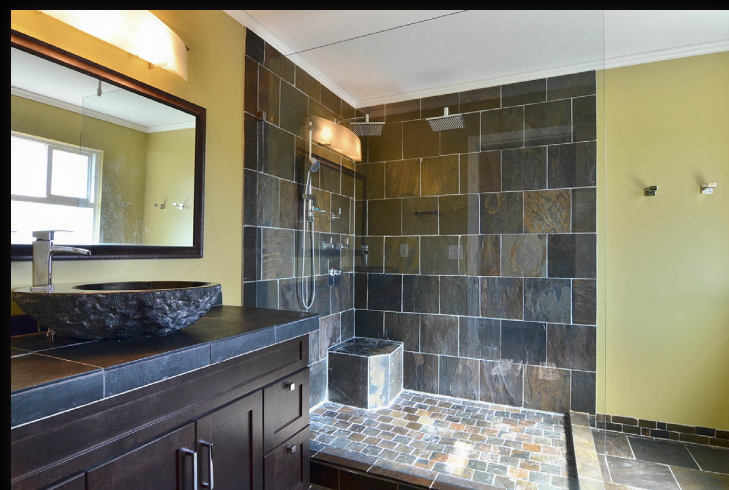
This version of the floorplan is for marketing purposes only.
Please contact Bettina Reid for specifications: 778-998-9645





18636 64A Ave, Surrey

Hillcrest neighbourhood 2 storey, 2348sf home on a quiet cul-de-sac. Walk in to this 3 bedroom, 3 bathroom home with BRAND new laminate floors in the formal living room w/vaulted ceilings. Laminate floors carry on through the formal dining room and into the bonus den/office on the main, as well as in the family room off the kitchen. Bright open kitchen with GE S/S appliances, tile floors, island and plenty of cupboard space. Upstairs you walk through double french doors in to large master bdrm with an amazing, Lg. spa like ENSUITE. Oversized walk in shower w/ dual rain shower heads. South facing yard w/lane access and plenty of room for RV pkg. Close to shopping, restaurants..... and only a block away from Hillcrest elem.



Lot	7745 ft ²
Frontage	96 ft ²
Tax	\$2954
Age	17 years
Style	2 Storey
Bedrooms	4
Bathrooms	3
Size	2348 ft ²

For more photos and a virtual tour, please visit: www.bettinareidgroup.ca



The Bettina Reid Group 778-998-9645
 Homelife Benchmark Realty Cloverdale
 #103 5830 176A St, Surrey BC V3S 4H5