



## MARY ELLEN MAASIK

Sutton Group West Coast - Kerrisdale

Cell: 604-657-8865

Office: 604-267-3800

mmaasik@sutton.com

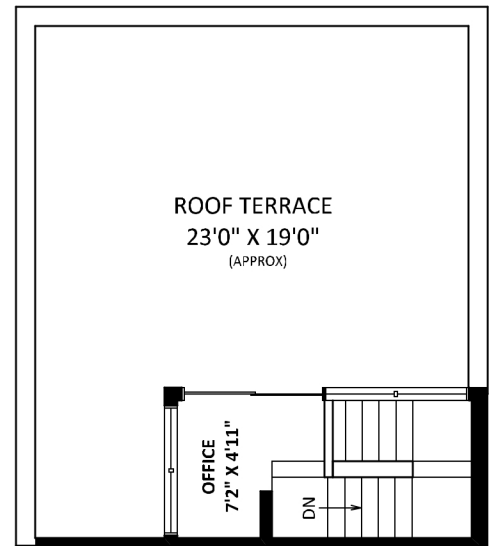
**1429 West 7th Avenue,**  
Vancouver, BC

**MAIN FLOOR: 652 SQ.FT.**  
**UPPER FLOOR: 687 SQ.FT.**  
**TOP FLOOR: 127 SQ.FT.**  
**LOWER FLOOR: 74 SQ.FT.**

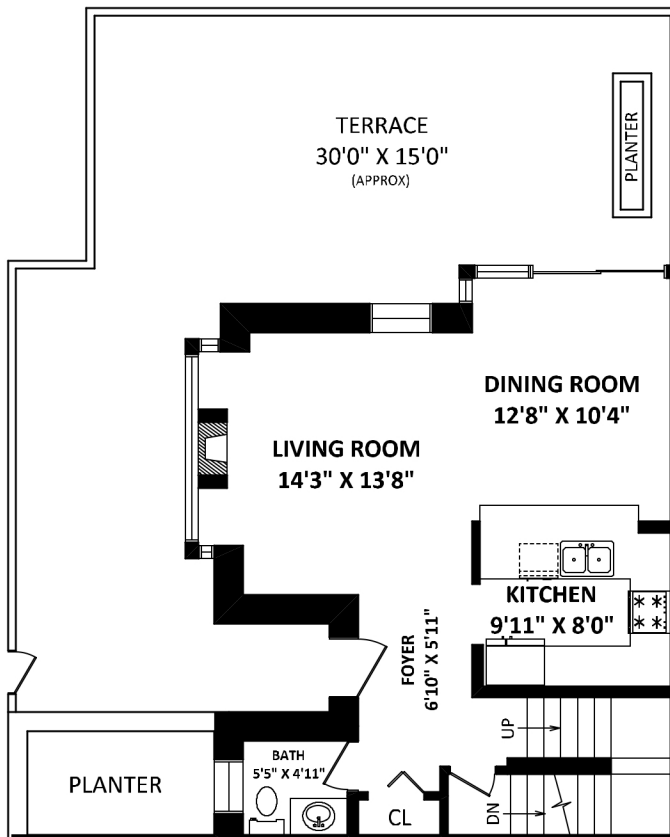
**TOTAL FINISHED AREA: 1540 SQ.FT.**

### OTHER AREAS:

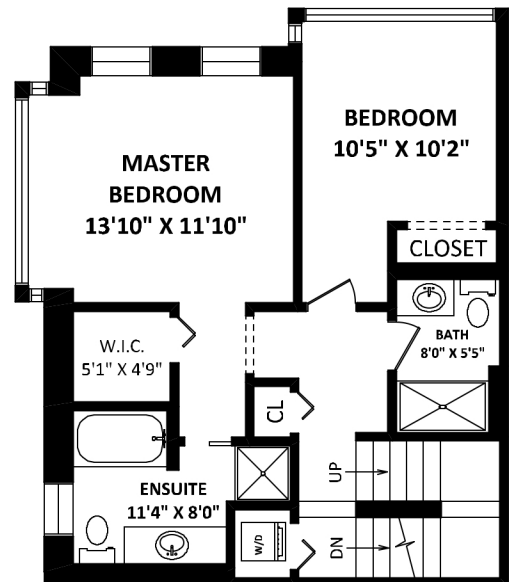
**GARAGE: 361 SQ.FT.**  
**PATIO: 695 SQ.FT.\***  
**ROOF PATIO: 514 SQ.FT.\***



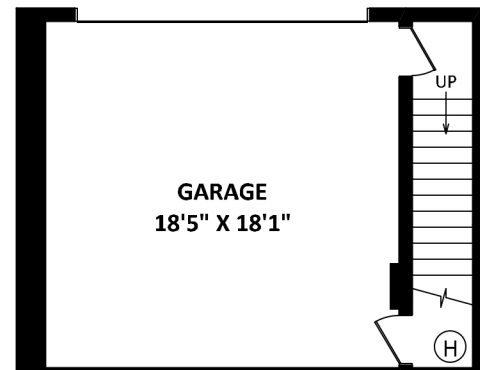
**TOP FLOOR: 127 SQ.FT.**



**MAIN FLOOR: 652 SQ.FT.**



**UPPER FLOOR: 687 SQ.FT.**



**LOWER FLOOR: 74 SQ.FT.**



SCALE: 0 2 5 10 FT

### GENERAL NOTES:

1. MEASUREMENTS ARE FOR PROMOTIONAL USE ONLY & ARE NOT INTENDED FOR CONSTRUCTION USE. ROOM DIMENSIONS ARE APPROXIMATE. MEASUREMENTS & CALCULATIONS FOR FINISHED AREAS ARE E&O INSURED.
2. FINISHED AREAS ARE ENCLOSED AREAS IN A HOUSE THAT ARE SUITABLE FOR YEAR-ROUND USE.
3. THIS FLOOR PLAN MAY ONLY BE REPRODUCED WITH PERMISSION OF THE REALTOR(S) ON THIS FLOOR PLAN.

\* ANY MEASUREMENT WITH AN ASTERISK (\*) OR (APPROX) ARE APPROXIMATE AND FOR ILLUSTRATION PURPOSES ONLY AND ARE NOT E&O INSURED.