

4385 Rockridge Road,
West Vancouver, BC



DON EILERS

RE/MAX Masters Realty

Cell: 604-889-9449

don@doneilers.com

www.doneilers.com

TOTAL FINISHED AREA: 2968 SQ.FT.

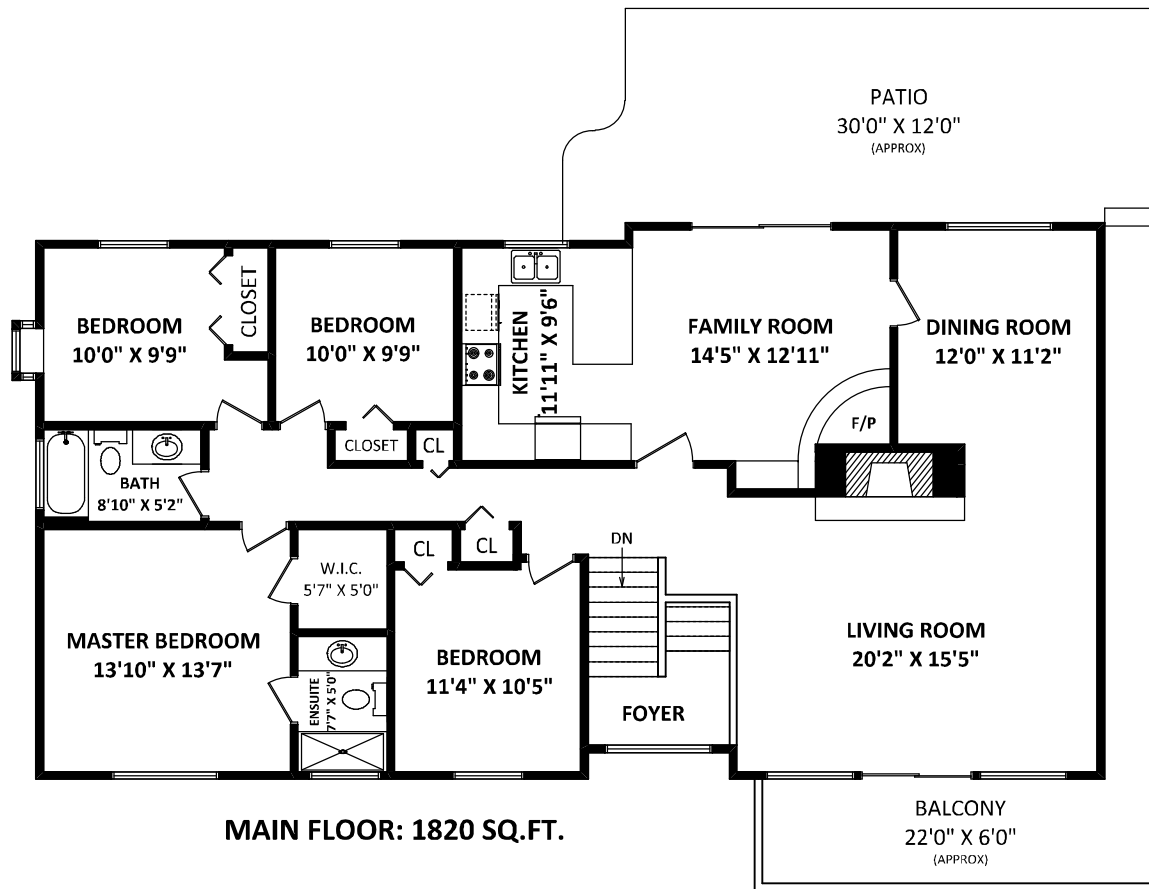
OTHER AREA(S)

CARPOR: 383 SQ.FT.

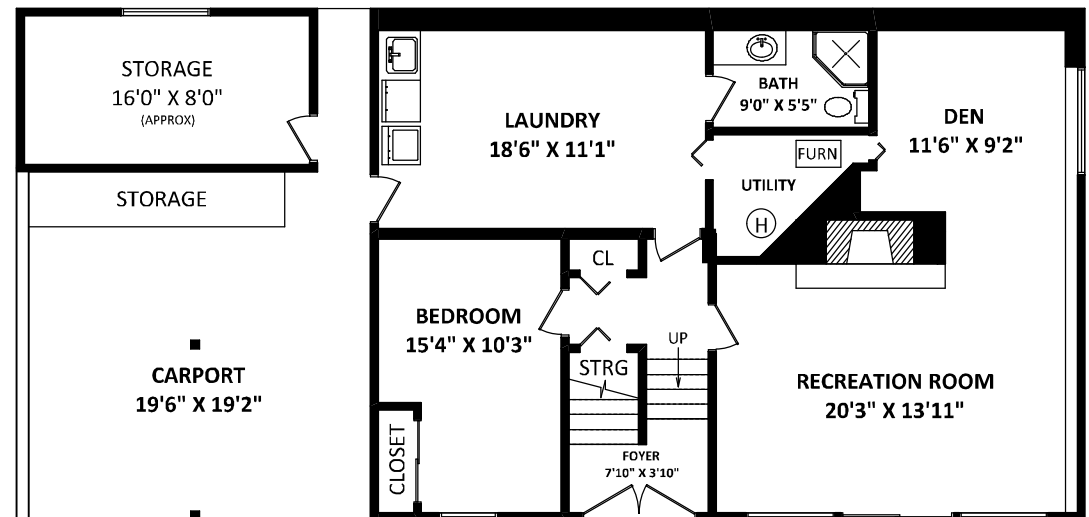
PATIO: 385 SQ.FT.*

BALCONY: 250 SQ.FT.*

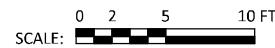
STORAGE: 154 SQ.FT.*



MAIN FLOOR: 1820 SQ.FT.



LOWER FLOOR: 1148 SQ.FT.



GENERAL NOTES:
 1. MEASUREMENTS ARE FOR PROMOTIONAL USE ONLY & ARE NOT INTENDED. FOR CONSTRUCTION USE. ROOM DIMENSIONS ARE APPROXIMATE. MEASUREMENTS & CALCULATIONS FOR FINISHED AREAS ARE E&O INSURED.
 2. FINISHED AREAS ARE ENCLOSED AREAS IN A HOUSE THAT ARE SUITABLE FOR YEAR-ROUND USE, EMBODYING WALLS, FLOORS, AND CEILINGS THAT ARE SIMILAR TO THE REST OF THE HOUSE. (ANSI Z765-2003)
 3. THIS FLOOR PLAN MAY ONLY BE REPRODUCED WITH PERMISSION OF THE REALTOR(S) ON THIS FLOOR PLAN.
 * ANY MEASUREMENT WITH AN ASTERISK (*) OR (APPROX) ARE APPROXIMATE AND FOR ILLUSTRATION PURPOSES ONLY AND ARE NOT E&O INSURED.