

2654 Homesteader Way,
Port Coquitlam, BC



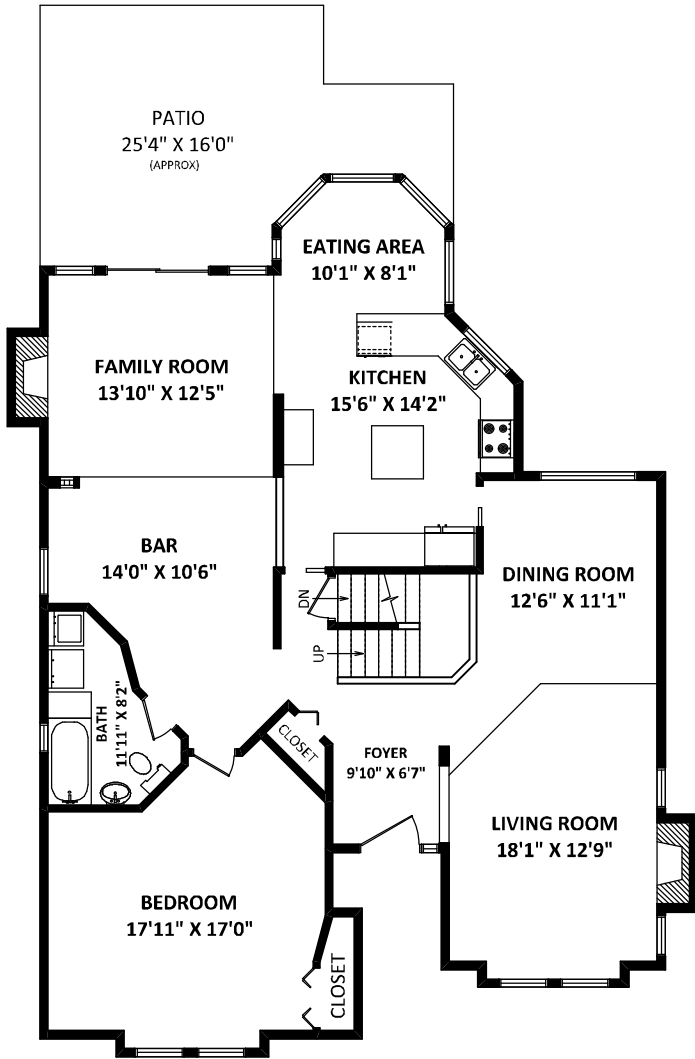
MICHAEL DOWLING
 Personal Real Estate Corporation
 RE/MAX Crest Realty Westside
 Phone: 604-684-6155
 Cell: 604-787-5568
 mdowling@telus.net
 www.MichaelDowling.ca



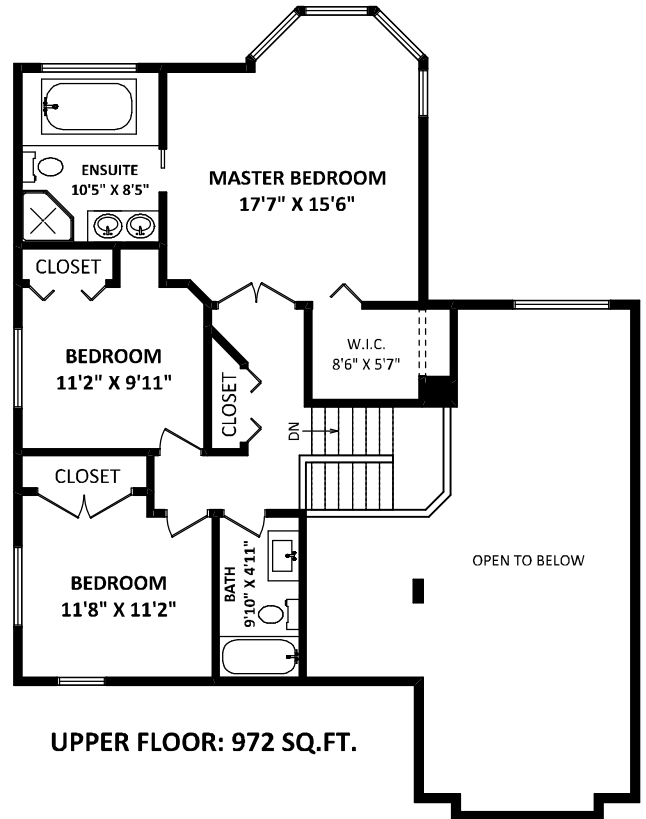
TOTAL FINISHED AREA: 4116 SQ.FT.

OTHER AREA(S)

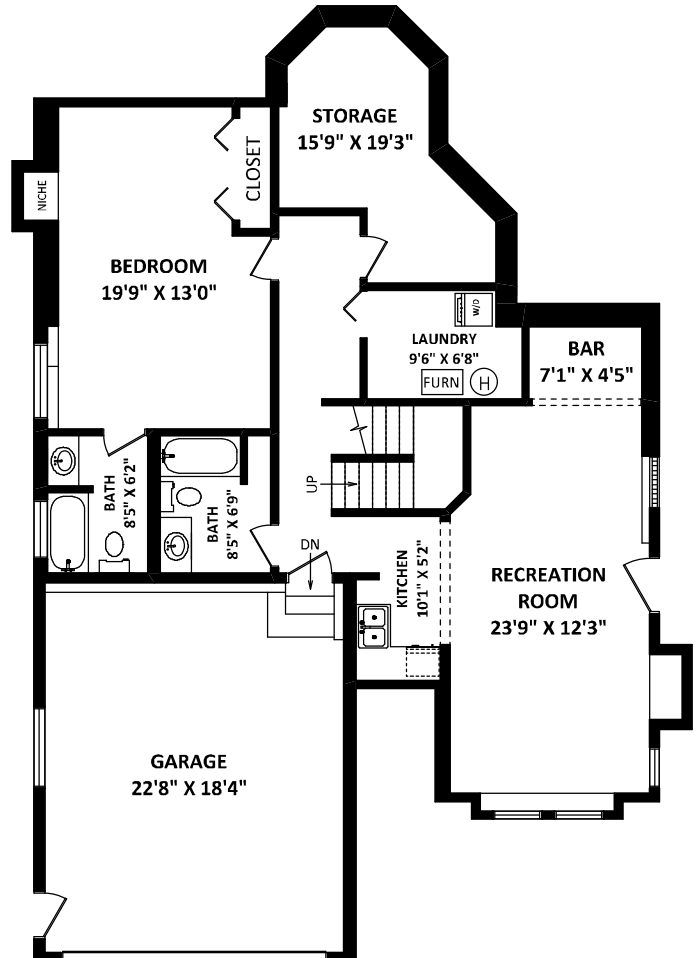
GARAGE: 466 SQ.FT.
 PATIO: 314 SQ.FT.*



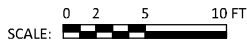
MAIN FLOOR: 1638 SQ.FT.



UPPER FLOOR: 972 SQ.FT.



LOWER FLOOR: 1506 SQ.FT.



GENERAL NOTES:
 1. MEASUREMENTS ARE FOR PROMOTIONAL USE ONLY & ARE NOT INTENDED FOR CONSTRUCTION USE. ROOM DIMENSIONS ARE APPROXIMATE. MEASUREMENTS & CALCULATIONS FOR FINISHED AREAS ARE E&O INSURED.
 2. FINISHED AREAS ARE ENCLOSED AREAS IN A HOUSE THAT ARE SUITABLE FOR YEAR-ROUND USE, EMBODYING WALLS, FLOORS, AND CEILINGS THAT ARE SIMILAR TO THE REST OF THE HOUSE. (ANSI Z765-2003).
 3. THIS FLOOR PLAN MAY ONLY BE REPRODUCED WITH PERMISSION OF THE REALTOR(S) ON THIS FLOOR PLAN.
 * ANY MEASUREMENT WITH AN ASTERISK (*) OR (APPROX) ARE APPROXIMATE AND FOR ILLUSTRATION PURPOSES ONLY AND ARE NOT E&O INSURED.

FLOOR PLAN BY:
 [JUNE 07, 2015]

 TEL: 604-575-1244
 www.seevirtual360.com