

1002 Stewart Avenue,
Coquitlam, BC

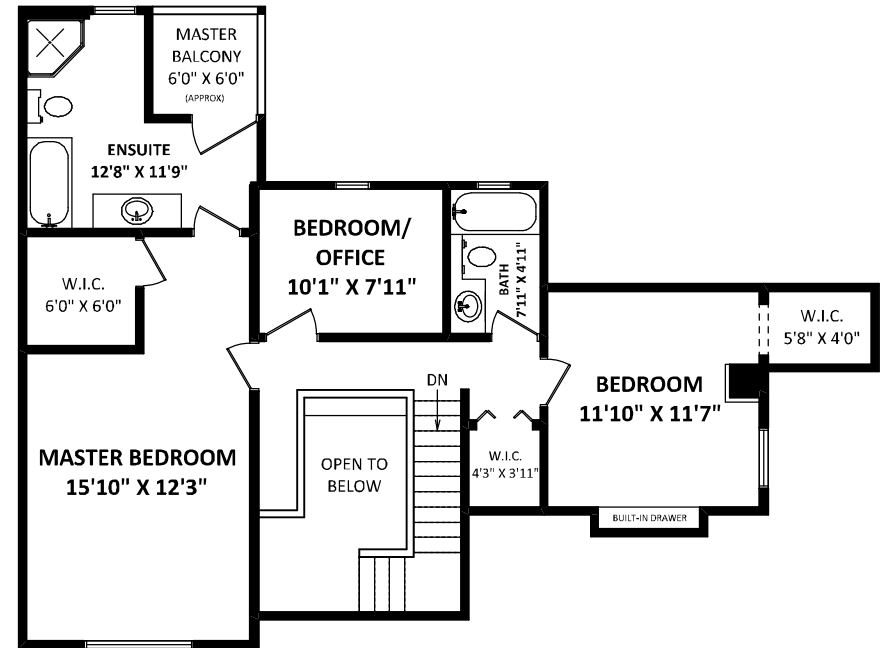
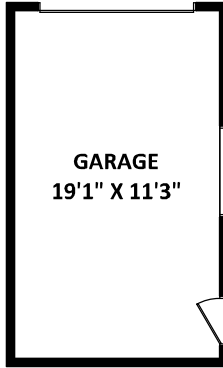


BARB FLESHER
One Percent Realty
Cell: 778-228-1153
Office: 604-806-0900
barbflesher@gmail.com
www.barbflesher.com

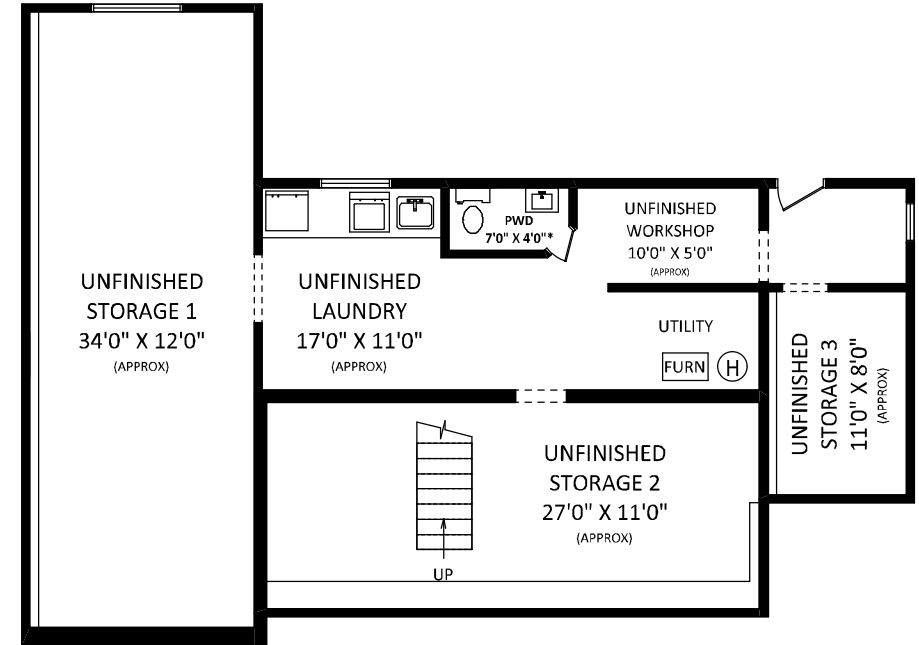
TOTAL FINISHED AREA: 2186 SQ.FT.

OTHER AREA(S)

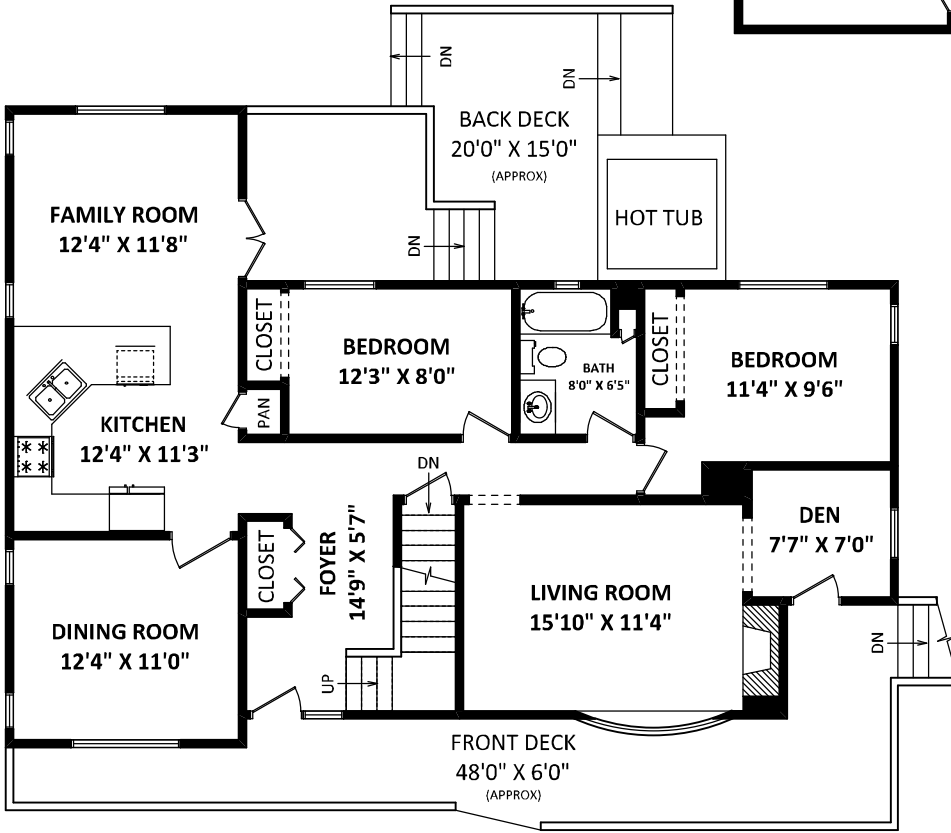
GARAGE:	240 SQ.FT.
FRONT DECK:	298 SQ.FT.*
BACK DECK:	294 SQ.FT.*
MASTER BALCONY:	36 SQ.FT.*



UPPER FLOOR: 903 SQ.FT.



LOWER FLOOR: 1283 SQ.FT. (UNFINISHED)



MAIN FLOOR: 1283 SQ.FT.

GENERAL NOTES:
1. MEASUREMENTS ARE FOR PROMOTIONAL USE ONLY & ARE NOT INTENDED FOR CONSTRUCTION USE.
ROOM DIMENSIONS ARE APPROXIMATE. MEASUREMENTS & CALCULATIONS FOR FINISHED AREAS ARE E&O INSURED.
2. FINISHED AREAS ARE ENCLOSED AREAS IN A HOUSE THAT ARE SUITABLE FOR YEAR-ROUND USE.
EMBODIED WALLS, FLOORS, AND CEILINGS THAT ARE SIMILAR TO THE REST OF THE HOUSE. (ANSI Z765-2003)
3. THIS FLOOR PLAN MAY ONLY BE REPRODUCED WITH PERMISSION OF THE REALTOR(S) ON THIS FLOOR PLAN.
* ANY MEASUREMENT WITH AN ASTERISK (*) OR (APPROX) ARE APPROXIMATE AND FOR ILLUSTRATION PURPOSES ONLY AND ARE NOT E&O INSURED.

