



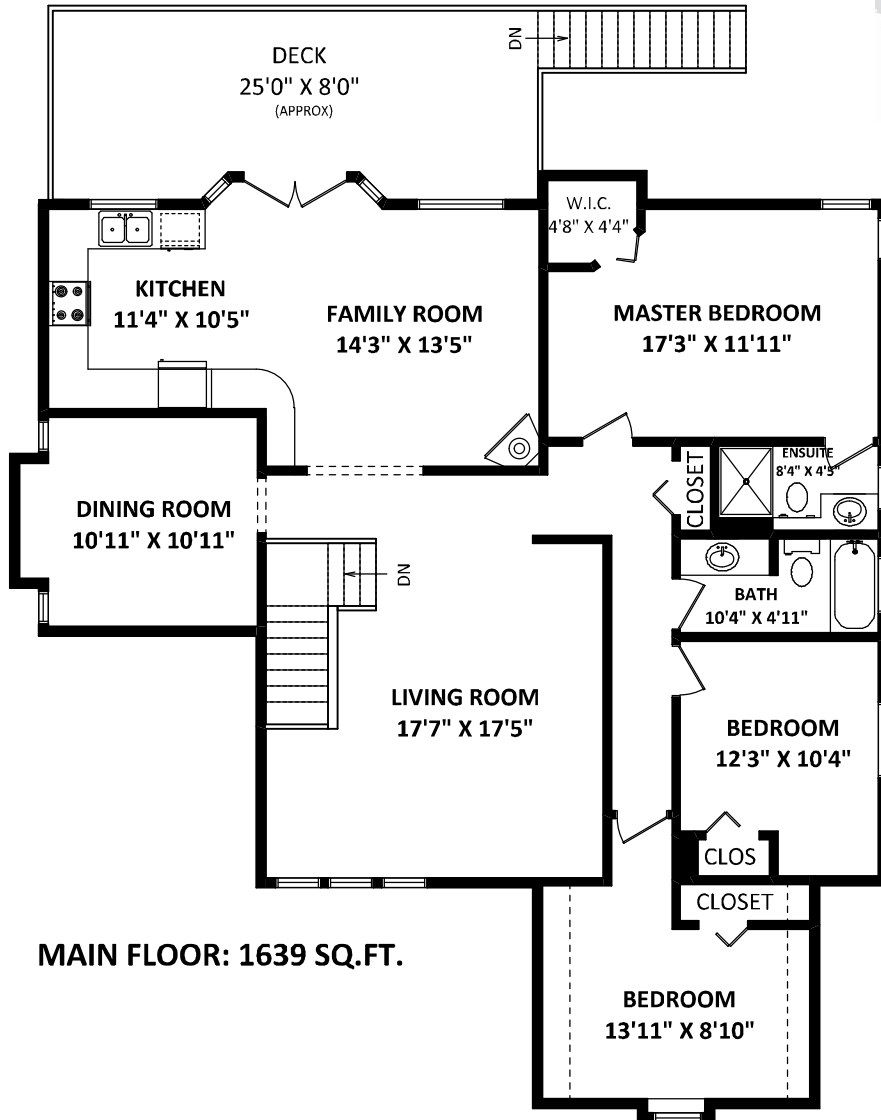
**TOTAL FINISHED AREA: 3061 SQ.FT. \*\***

\*\*INCLUDING 43 SQ.FT. OF LOW CEILING AREA(S), BOUND BY DOTTED LINES.

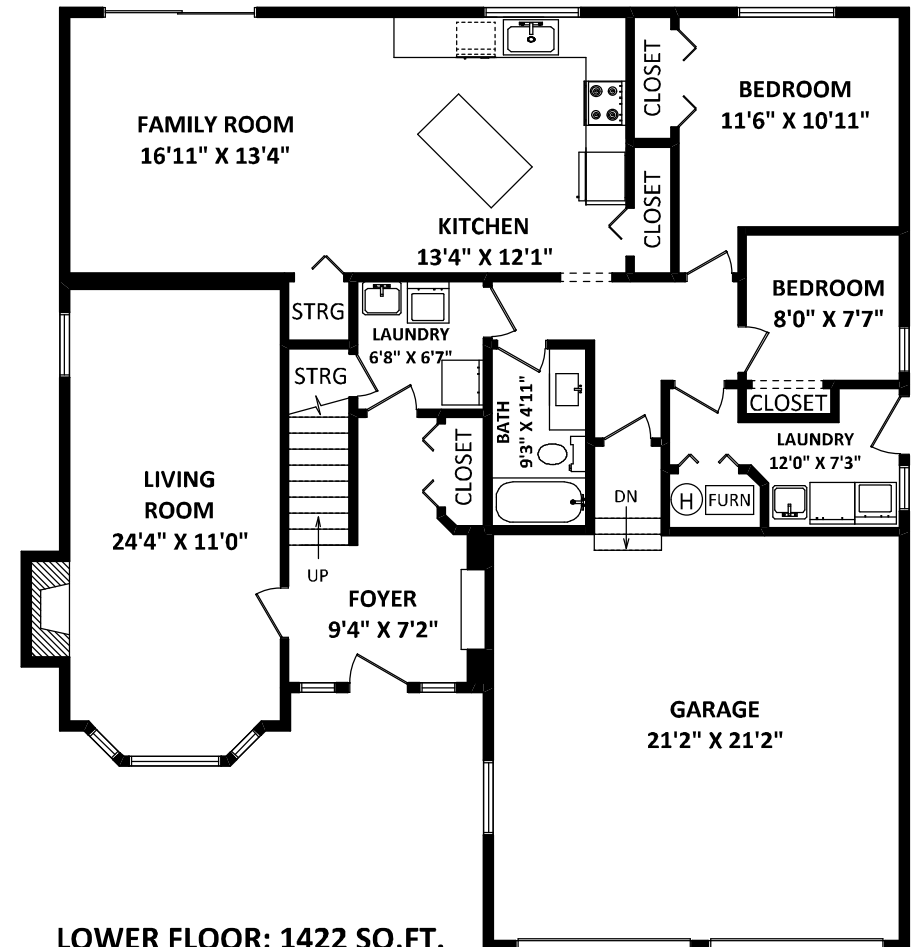
**OTHER AREA(S)**

**GARAGE:** 493 SQ.FT.

**DECK:** 248 SQ.FT.\*



**MAIN FLOOR: 1639 SQ.FT.**



**LOWER FLOOR: 1422 SQ.FT.**

**GENERAL NOTES:**

1. MEASUREMENTS ARE FOR PROMOTIONAL USE ONLY & ARE NOT INTENDED FOR CONSTRUCTION USE. ROOM DIMENSIONS ARE APPROXIMATE. MEASUREMENTS & CALCULATIONS FOR FINISHED AREAS ARE E&O INSURED.
  2. FINISHED AREAS ARE ENCLOSED AREAS IN A HOUSE THAT ARE SUITABLE FOR YEAR-ROUND USE, EMBODYING WALLS, FLOORS, AND CEILINGS THAT ARE SIMILAR TO THE REST OF THE HOUSE. (ANSI Z765-2003)
  3. THIS FLOOR PLAN MAY ONLY BE REPRODUCED WITH PERMISSION OF THE REALTOR(S) ON THIS FLOOR PLAN.
- \* ANY MEASUREMENT WITH AN ASTERISK (\*) OR (APPROX) ARE APPROXIMATE AND FOR ILLUSTRATION PURPOSES ONLY AND ARE NOT E&O INSURED.



FLOOR PLAN BY:

[APRIL 27, 2015]



TEL: 604-575-1244

www.seevirtual360.com