

**#417 4001 Mount Seymour Parkway,
North Vancouver, BC**

TOTAL AREA: 1885 SQ.FT.
TOTAL FINISHED AREA: 1675 SQ.FT.

OTHER AREA(S)

UNFINISHED LAUNDRY/UTILITY: 210 SQ.FT.
PATIO: 465 SQ.FT.*
CARPORT: 174 SQ.FT.*



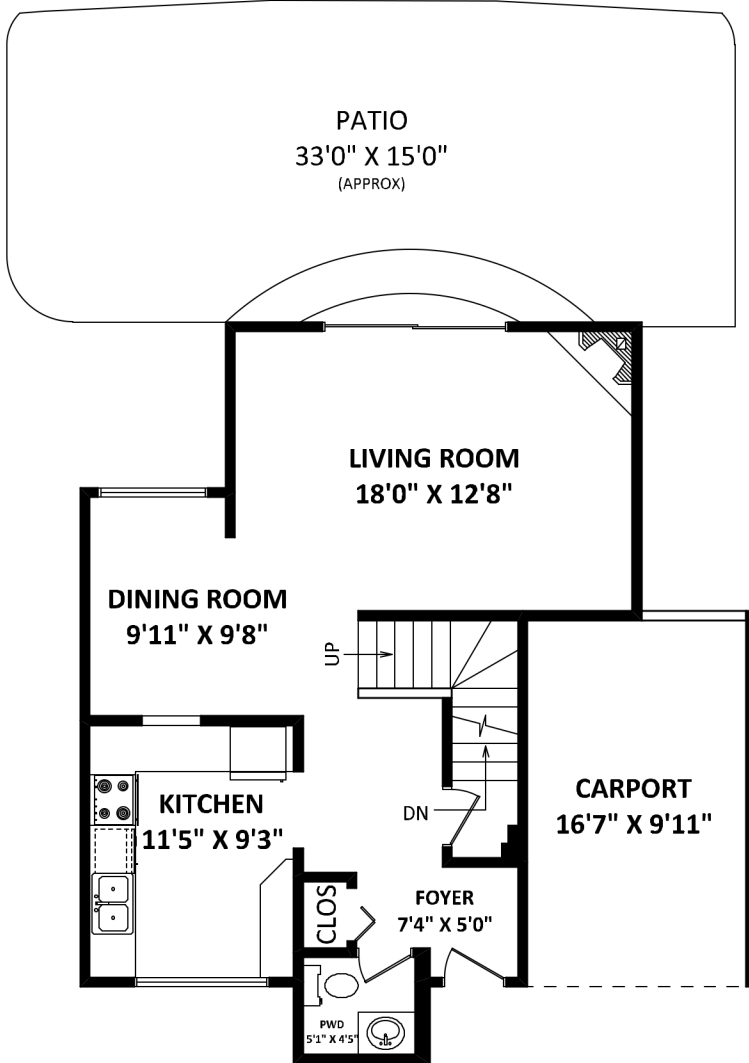
PHIL LeGREE

RE/MAX Masters Realty

Cell: (604) 518 - 1644

plegree@gmail.com

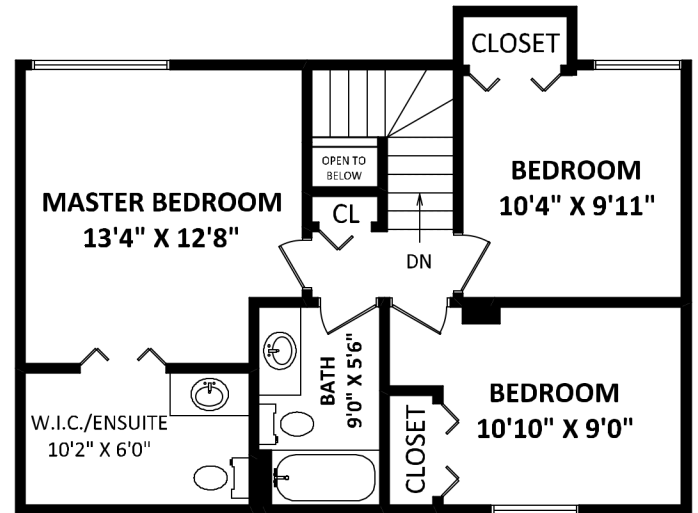
www.phillegree.com



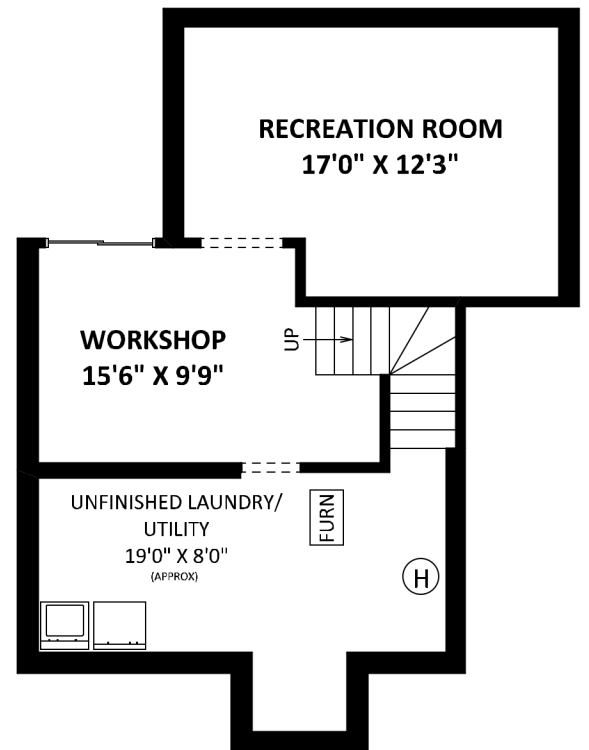
MAIN FLOOR: 630 SQ.FT.



SCALE: 0 2 5 10 FT



UPPER FLOOR: 625 SQ.FT.



LOWER FLOOR:

FINISHED AREA: 420 SQ.FT.

UNFINISHED AREA(S): 210 SQ.FT.

GENERAL NOTES:
1. MEASUREMENTS ARE FOR PROMOTIONAL USE ONLY & ARE NOT INTENDED FOR CONSTRUCTION USE. ROOM DIMENSIONS ARE APPROXIMATE. STRATA PLAN SQUARE FOOTAGE FOR THIS UNIT IS NOT E&O INSURED.
2. FINISHED AREAS ARE ENCLOSED AREAS IN A HOUSE THAT ARE SUITABLE FOR YEAR-ROUND USE, EMBODYING WALLS, FLOORS, AND CEILINGS THAT ARE SIMILAR TO THE REST OF THE HOUSE. (ANSI Z765-2003)
3. THIS FLOOR PLAN MAY ONLY BE REPRODUCED WITH PERMISSION OF THE REALTOR(S) ON THIS FLOOR PLAN.
* ANY MEASUREMENT WITH AN ASTERISK (*) OR (APPROX) ARE APPROXIMATE AND FOR ILLUSTRATION PURPOSES ONLY AND ARE NOT E&O INSURED.