

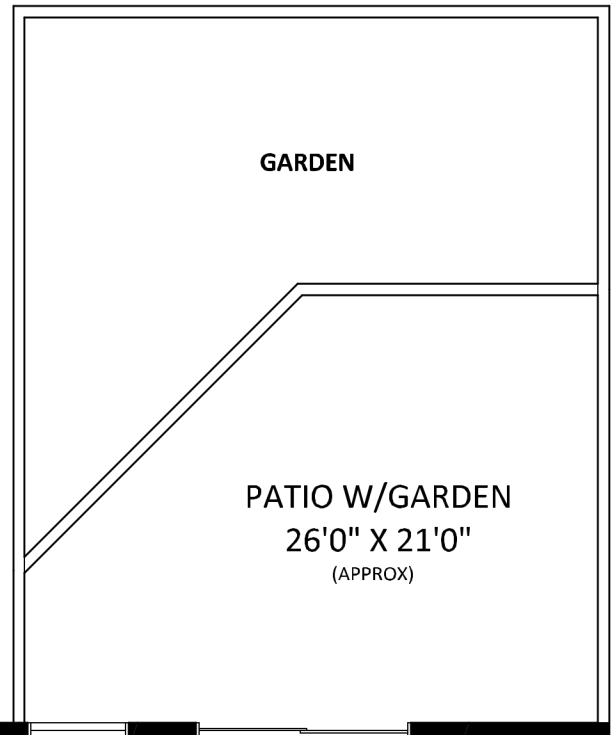
#202 2475 York Avenue,
Vancouver, BC



MICHAEL DOWLING
 Personal Real Estate Corporation



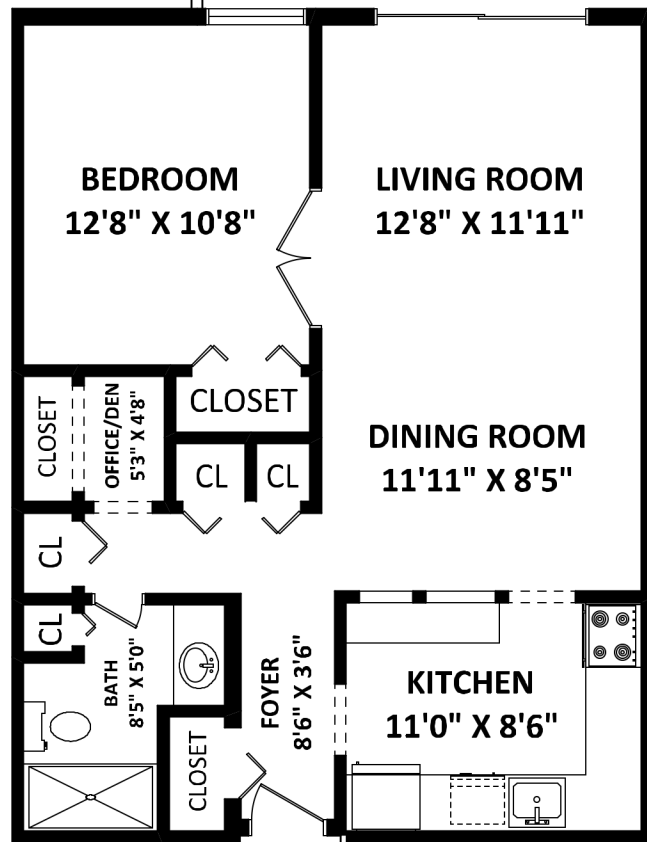
RE/MAX Crest Realty Westside
 Phone: 604-684-6155
 Cell: 604-787-5568
 mdowling@telus.net
 www.michaeldowling.ca



TOTAL FINISHED AREA: 728 SQ.FT.

OTHER AREA(S)

PATIO W/GARDEN: 586 SQ.FT.*



GENERAL NOTES:

1. MEASUREMENTS ARE FOR PROMOTIONAL USE ONLY & ARE NOT INTENDED FOR CONSTRUCTION USE. ROOM DIMENSIONS ARE APPROXIMATE. MEASUREMENTS & CALCULATIONS FOR FINISHED AREAS ARE E&O INSURED.
 2. FINISHED AREAS ARE ENCLOSED AREAS IN A HOUSE THAT ARE SUITABLE FOR YEAR-ROUND USE, EMBODYING WALLS, FLOORS, AND CEILINGS THAT ARE SIMILAR TO THE REST OF THE HOUSE. (ANSI Z765-2003)
 3. THIS FLOOR PLAN MAY ONLY BE REPRODUCED WITH PERMISSION OF THE REALTOR(S) ON THIS FLOOR PLAN.
- * ANY MEASUREMENT WITH AN ASTERISK (*) OR (APPROX) ARE APPROXIMATE AND FOR ILLUSTRATION PURPOSES ONLY AND ARE NOT E&O INSURED.



FLOOR PLAN BY:

[MARCH 3, 2015]



TEL: 604-575-1244
 www.seevirtual360.com