

**3022 Maplewood Court,
Coquitlam, BC**



MICHAEL DOWLING

RE/MAX Crest Realty Westside

Phone: 604-684-6155

Cell: 604-787-5568

mdowling@telus.net

www.MichaelDowling.ca

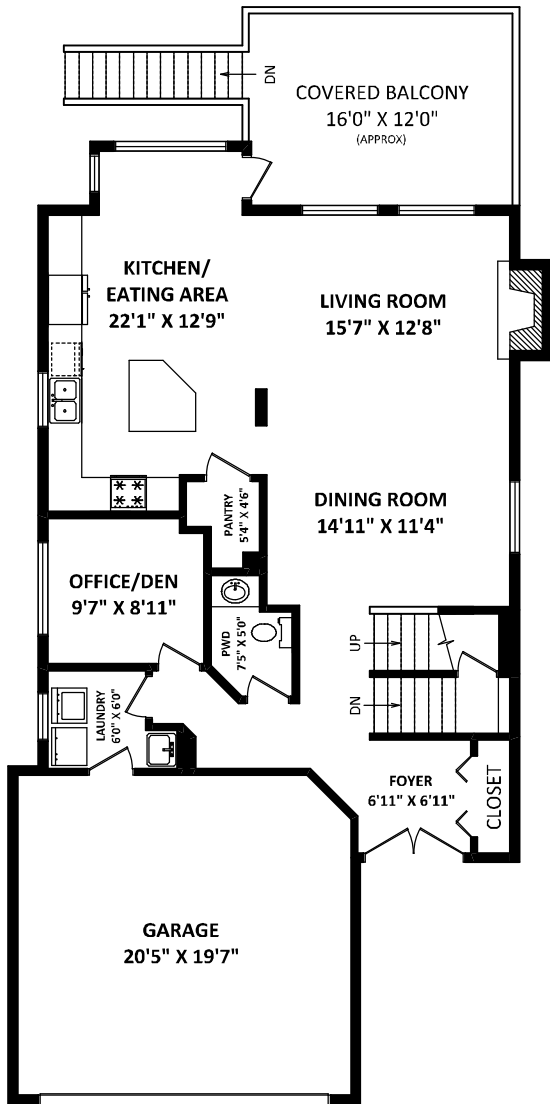
TOTAL FINISHED AREA: 3567 SQ.FT.

OTHER AREA(S)

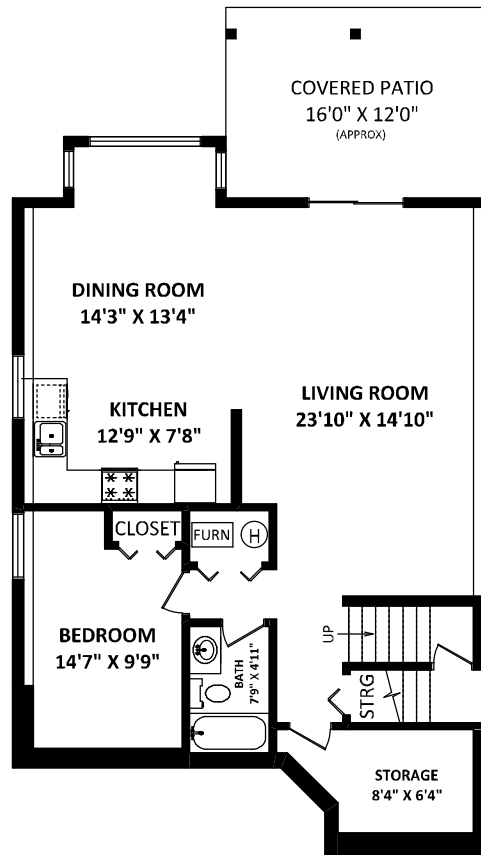
GARAGE: 430 SQ.FT.

COVERED BALCONY: 204 SQ.FT.*

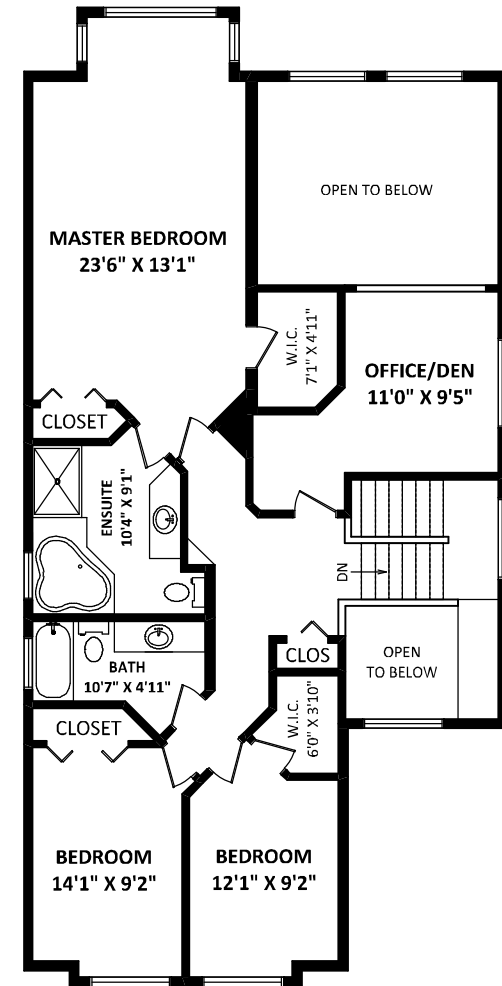
COVERED PATIO: 192 SQ.FT.*



MAIN FLOOR: 1127 SQ.FT.



LOWER FLOOR: 1127 SQ.FT.



UPPER FLOOR: 1313 SQ.FT.

GENERAL NOTES:

1. MEASUREMENTS ARE FOR PROMOTIONAL USE ONLY & ARE NOT INTENDED FOR CONSTRUCTION USE. ROOM DIMENSIONS ARE APPROXIMATE. SQUARE FOOTAGE CALCULATION FOR THIS UNIT ARE NOT E&O INSURED.
2. FINISHED AREAS ARE ENCLOSED AREAS IN A HOUSE THAT ARE SUITABLE FOR YEAR-ROUND USE, EMBODYING WALLS, FLOORS, AND CEILINGS THAT ARE SIMILAR TO THE REST OF THE HOUSE. (ANSI Z765-2003)
3. THIS FLOOR PLAN MAY ONLY BE REPRODUCED WITH PERMISSION OF THE REALTOR(S) ON THIS FLOOR PLAN. * ANY MEASUREMENT WITH AN ASTERISK (*) OR (APPROX) ARE APPROXIMATE AND FOR ILLUSTRATION PURPOSES ONLY AND ARE NOT E&O INSURED.

FLOOR PLAN BY:

[AUGUST 21, 2014]



TEL: 604-575-1244
www.seevirtual360.com



SCALE: 0 2 5 10 FT