

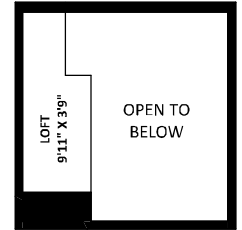
2410 124B Street,
Surrey, BC



TOTAL FINISHED AREA: 2281 SQ.FT.

OTHER AREA(S)

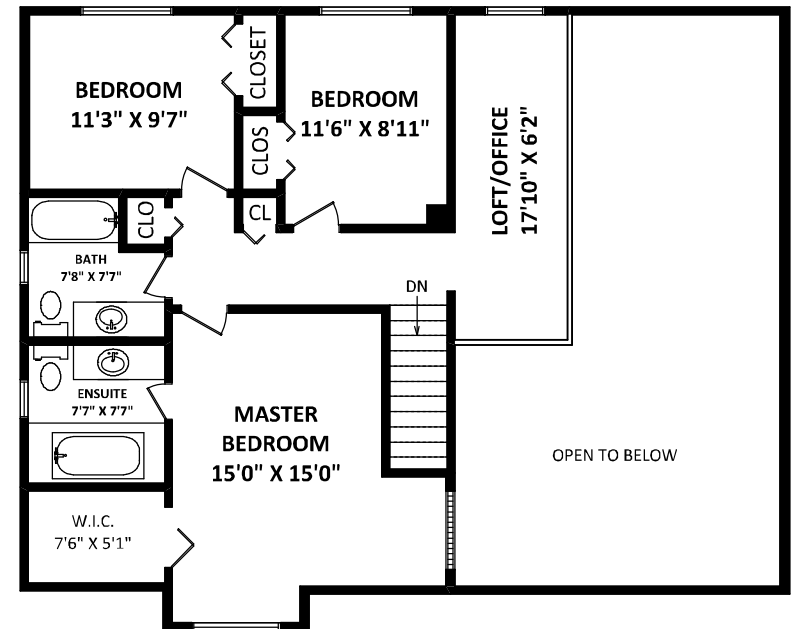
GARAGE:	344 SQ.FT.
PORCH:	187 SQ.FT.*
DECKS:	727 SQ.FT.*



LOFT ABOVE
WITH SLOPED CEILING



MAIN FLOOR: 1380 SQ.FT.



UPPER FLOOR: 901 SQ.FT.

EXCLUDING 40 SQ.FT. LOFT ABOVE BEDROOM



GENERAL NOTES:
 1. MEASUREMENTS ARE FOR PROMOTIONAL USE ONLY & ARE NOT INTENDED FOR CONSTRUCTION USE.
 ROOM DIMENSIONS ARE APPROXIMATE. MEASUREMENTS & CALCULATIONS FOR FINISHED AREAS ARE E&O INSURED.
 2. FINISHED AREAS ARE ENCLOSED AREAS IN A HOUSE THAT ARE SUITABLE FOR YEAR-ROUND USE, EMBODYING WALLS, FLOORS, AND CEILINGS THAT ARE SIMILAR TO THE REST OF THE HOUSE. (ANSI Z765-2003)
 3. THIS FLOOR PLAN MAY ONLY BE REPRODUCED WITH PERMISSION OF THE REALTOR(S) ON THIS FLOOR PLAN.
 * ANY MEASUREMENT WITH AN ASTERISK (*) OR (APPROX) ARE APPROXIMATE AND FOR ILLUSTRATION PURPOSES ONLY AND ARE NOT E&O INSURED.

FLOOR PLAN BY: [FEBRUARY 4, 2014]

 TEL: 604-575-1244
 www.sevirtual360.com