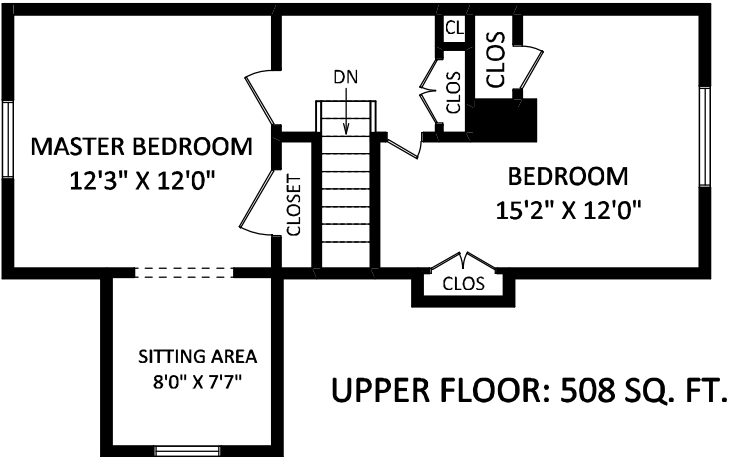


929 Henley Street,
New Westminster, BC

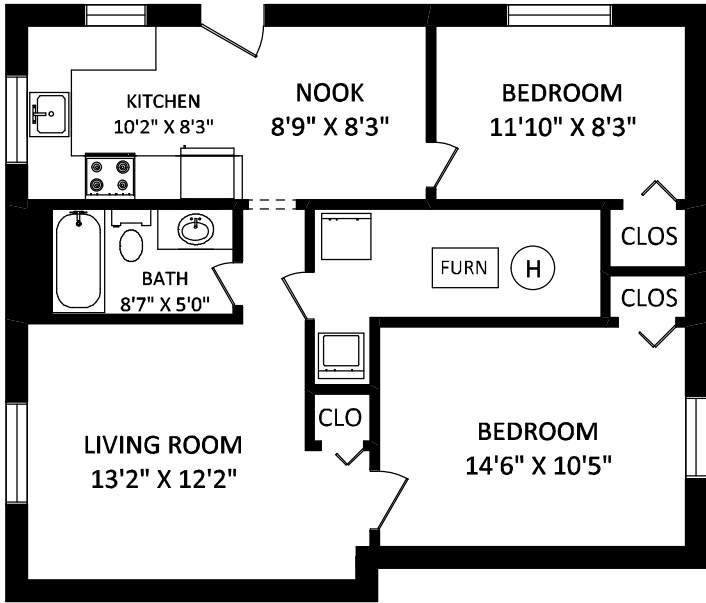
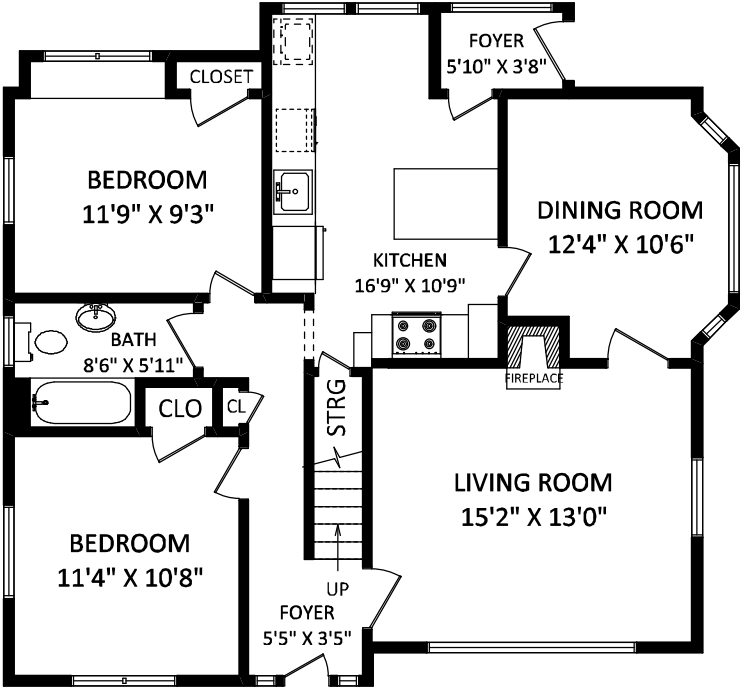


ERIC & JULIANA VALLEE

Keller Williams Elite Realty
Cell-Eric: (604) 788-5133
Cell-Juliana: (778) 822-8000
eric@valleerealestate.ca
juliana@valleerealestate.ca
www.valleerealestate.ca



TOTAL FINISHED AREA:
2403 SQ.FT.



GENERAL NOTES:
1. MEASUREMENTS ARE FOR PROMOTIONAL USE ONLY & IS NOT INTENDED FOR CONSTRUCTION USE. ROOM SIZES SHOULD BE CONSIDERED APPROXIMATE. MEASUREMENTS & CALCULATIONS ARE E&O INSURED.
2. TOTAL FINISHED AREA IS AN ENCLOSED AREA IN A HOUSE THAT IS SUITABLE FOR YEAR-ROUND USE, EMBODYING WALLS, FLOORS, AND CEILINGS THAT ARE SIMILAR TO THE REST OF THE HOUSE. (ANSI)
3. THIS FLOOR PLAN MAY ONLY BE REPRODUCED WITH PERMISSION OF THE REALTOR ON THIS FLOOR PLAN.

FLOOR PLAN BY: [FEBRUARY 4, 2013]
SEEVIRTUAL
MARKETING & PHOTOGRAPHY
TEL: (604) 575-1244
www.seevirtual360.com