

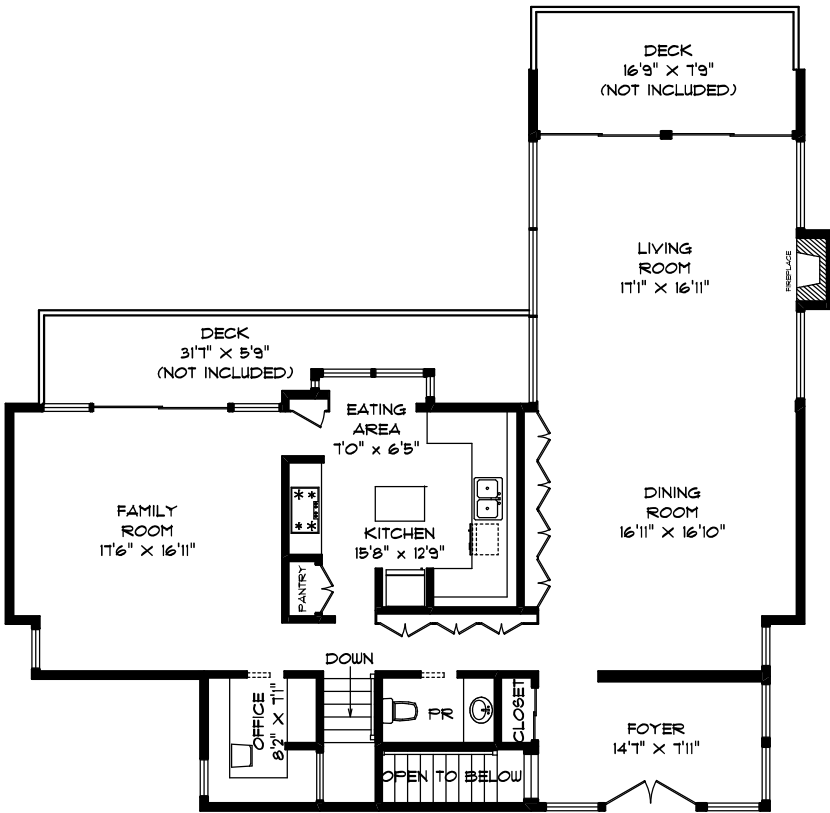
**418 BEACHVIEW DRIVE
NORTH VANCOUVER**

TOTAL USABLE AREA 4351 SQ.FT.

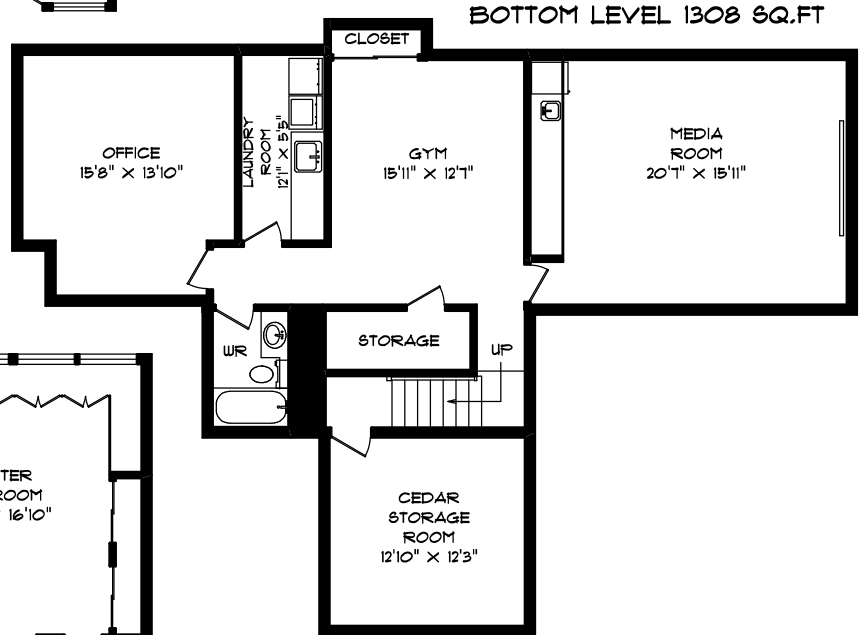
NOT INCLUDED 894 SQ.FT.

**GREG CARROS
604-603-5730**

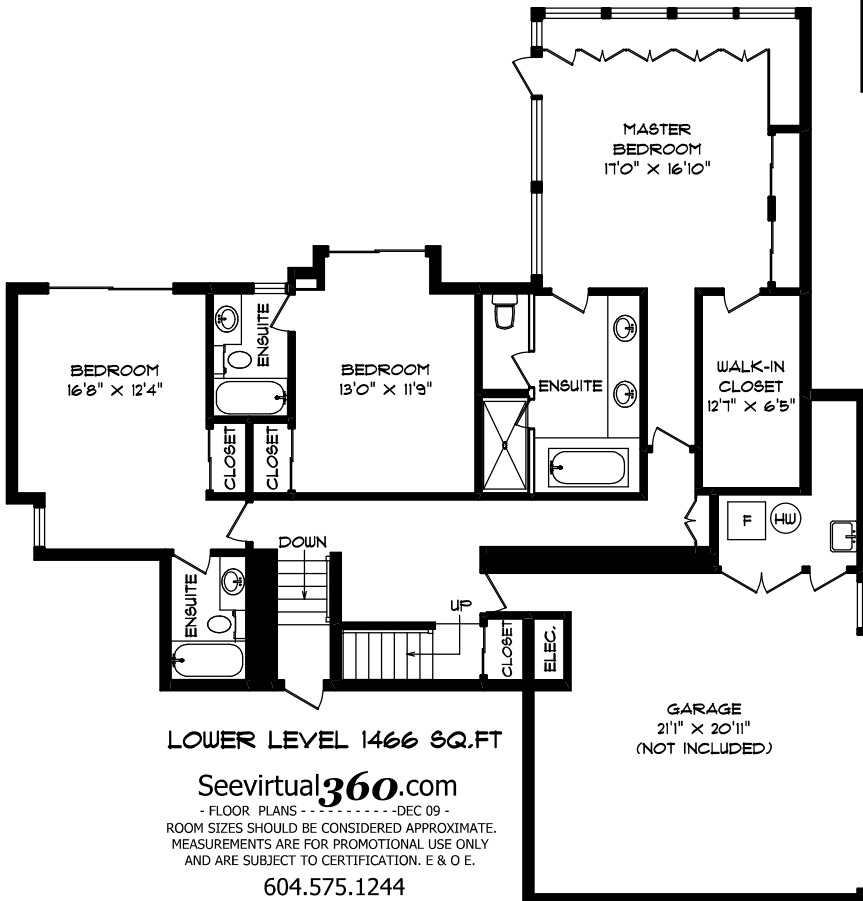
**ADA KO
604-649-2067**



MAIN LEVEL 1593 SQ.FT



BOTTOM LEVEL 1308 SQ.FT



LOWER LEVEL 1466 SQ.FT

Seevirtual360.com
- FLOOR PLANS - - - - - DEC 09 -
ROOM SIZES SHOULD BE CONSIDERED APPROXIMATE.
MEASUREMENTS ARE FOR PROMOTIONAL USE ONLY
AND ARE SUBJECT TO CERTIFICATION. E & O. E.
604.575.1244