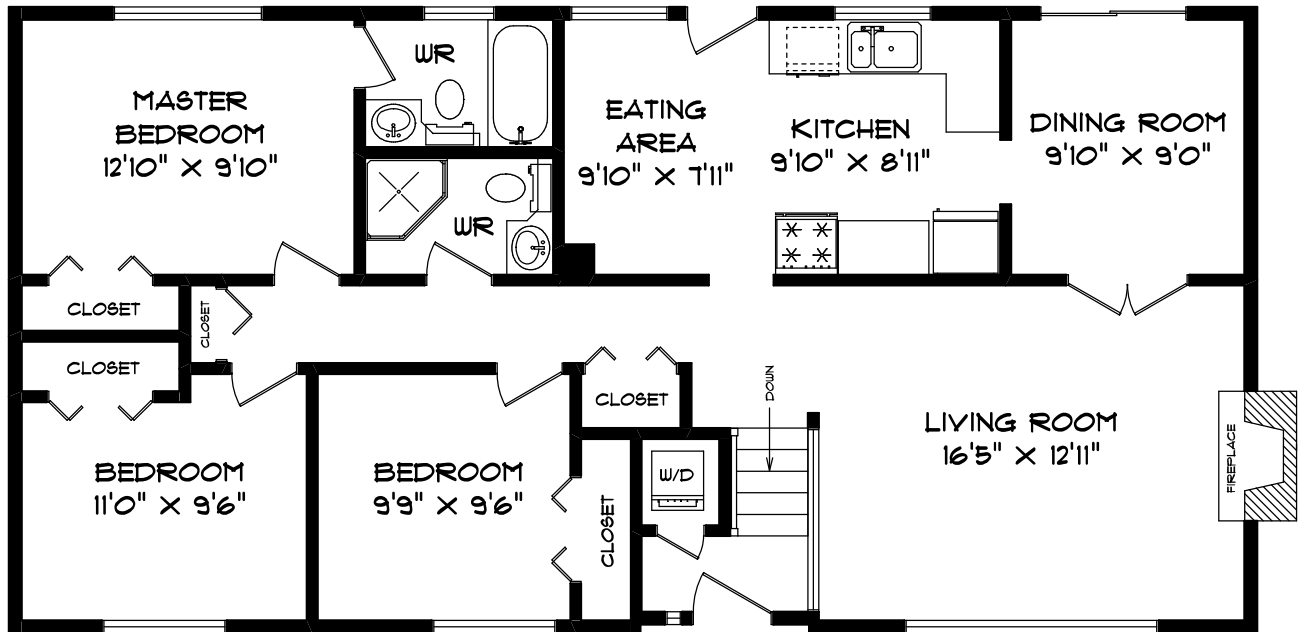


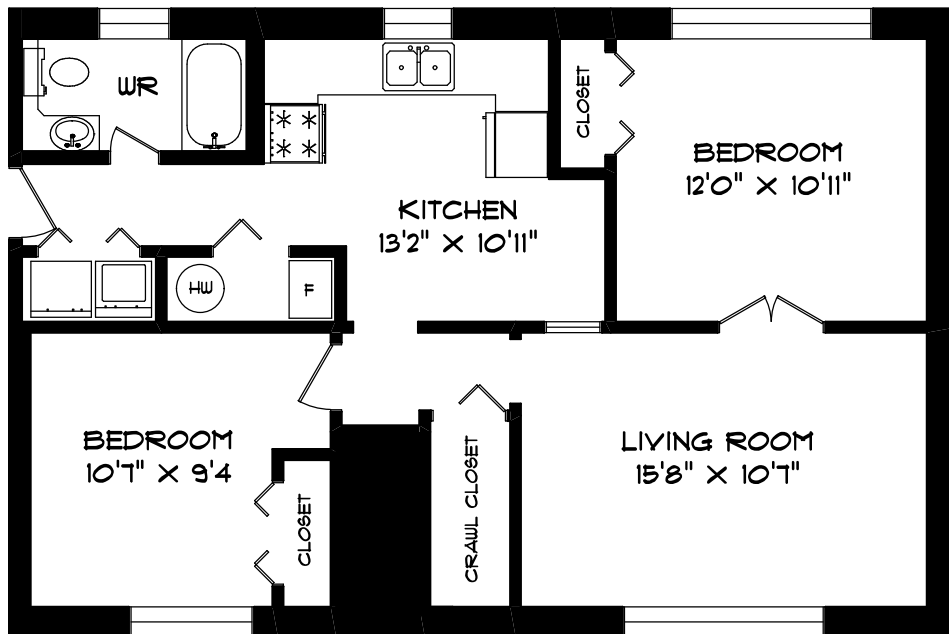
22909 ST. ANDREWS STREET  
LANGLEY

ANDY SCHILDHORN  
604-530-4111



MAIN FLOOR  
1162 SQUARE FEET

LOWER FLOOR  
887 SQUARE FEET



TOTAL USABLE AREA  
2049 SQUARE FEET

Seevirtual360.com  
- FLOOR PLANS -

JUNE - 05

ROOM SIZES SHOULD BE CONSIDERED APPROXIMATE  
SINCE MEASUREMENTS ARE SUBJECT TO CERTIFICATION. E & OE.

604-575-1244