

10252 ALLARD CRESCENT
FORT LANGLEY

TOTAL USABLE AREA 1352 SQ.FT.

NOT INCLUDED 222 SQ.FT.

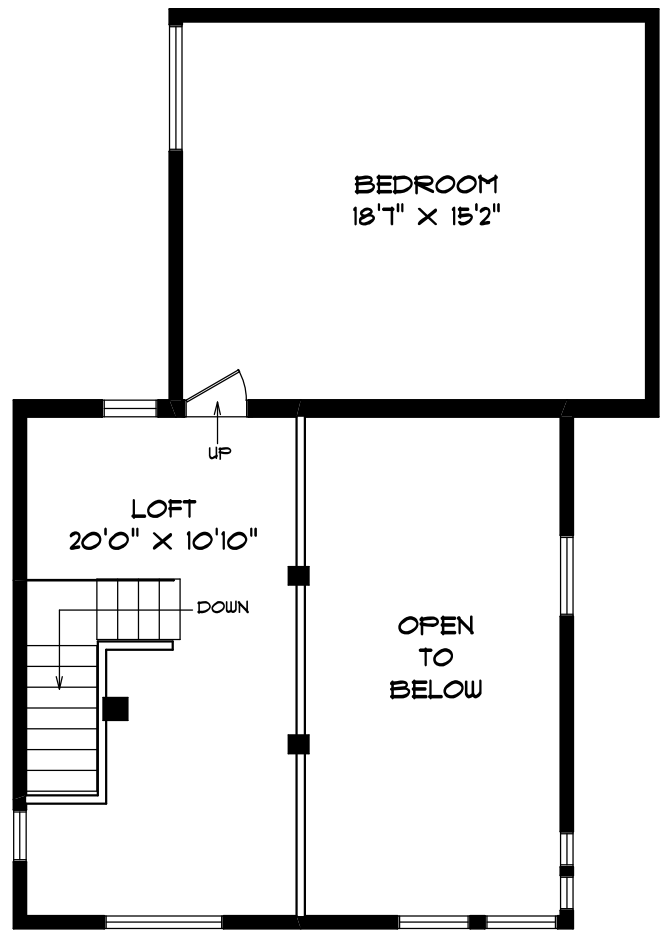
ANDY SCHILDHORN
778-835-8957

Seevirtual360.com

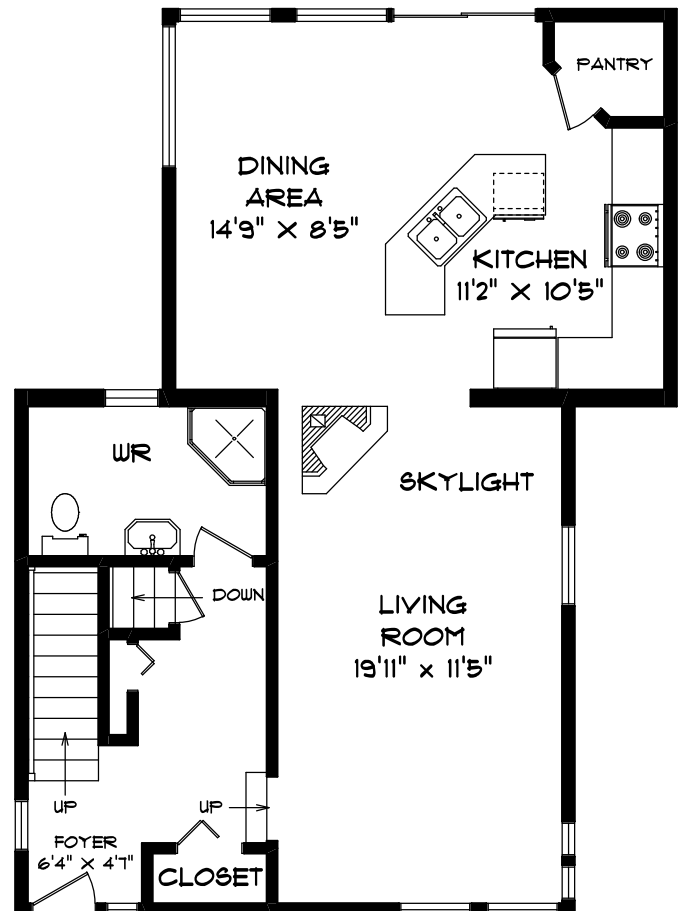
- FLOOR PLANS - - - - - MAY 09 -

ROOM SIZES SHOULD BE CONSIDERED APPROXIMATE.
MEASUREMENTS ARE FOR PROMOTIONAL USE ONLY
AND ARE SUBJECT TO CERTIFICATION. E & O E.

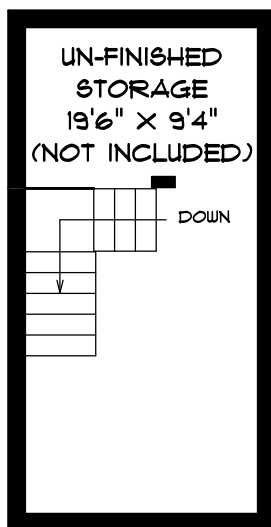
604.575.1244



UPPER LEVEL 563 SQ.FT.



MAIN LEVEL 789 SQ.FT.



LOWER LEVEL 222 SQ.FT.