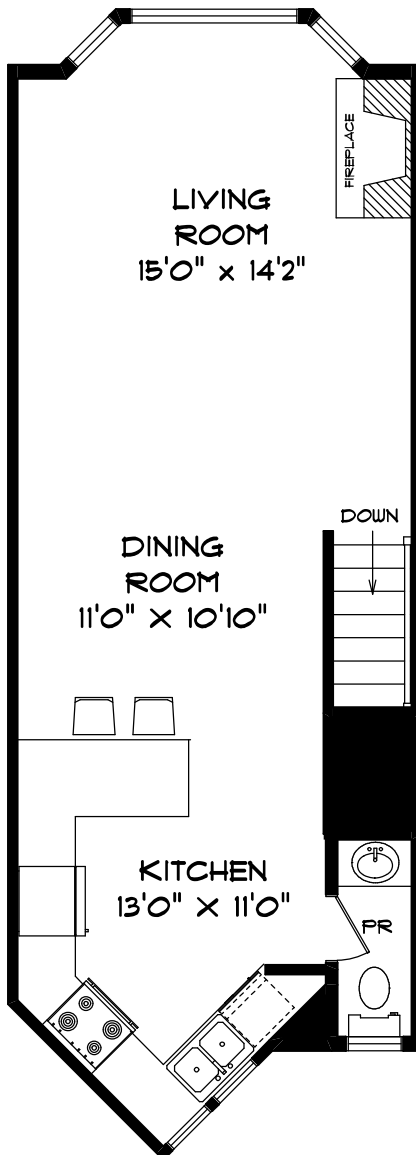


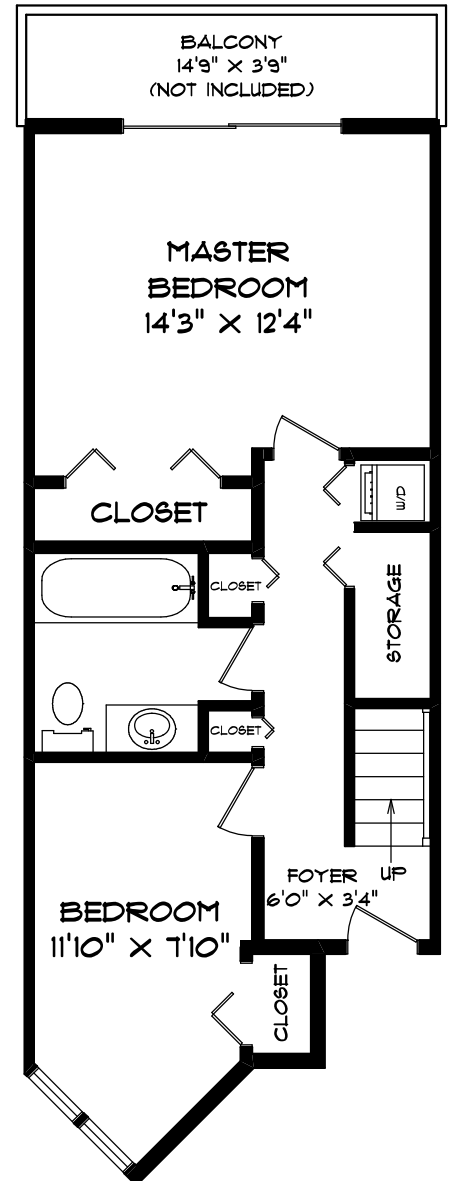
1290 WEST 6th AVENUE
VANCOUVER

DANA PROPP
604-616-5815

TOTAL USABLE AREA
1066 SQUARE FEET



MAIN LEVEL
557 SQUARE FEET



LOWER LEVEL
509 SQUARE FEET

Seevirtual360.com

- FLOOR PLANS - - - - - APR 08 -

ROOM SIZES SHOULD BE CONSIDERED APPROXIMATE.
MEASUREMENTS ARE FOR PROMOTIONAL USE ONLY
AND ARE SUBJECT TO CERTIFICATION. E & O E.

604.575.1244