

2919 145A STREET › SURREY



2919 145A STREET › SURREY



Features

Bedrooms:	6
Bathrooms:	Full: 3 Half: 1
Size:	5818 ft. ²
Year Built:	1989
Type:	Residential Detached

Style:	2 Storey w/Bsmt.
Frontage:	170 ft. ²
Lot Area:	12066 ft. ² 1120.96 m ²
Amenities:	Elevator / Wheelchair Access
Basement Area:	Fully Finished



Garry Hedberg • 604-644-6442
ghedberg@shaw.ca

**BENCHMARK
TITUS REALTY**

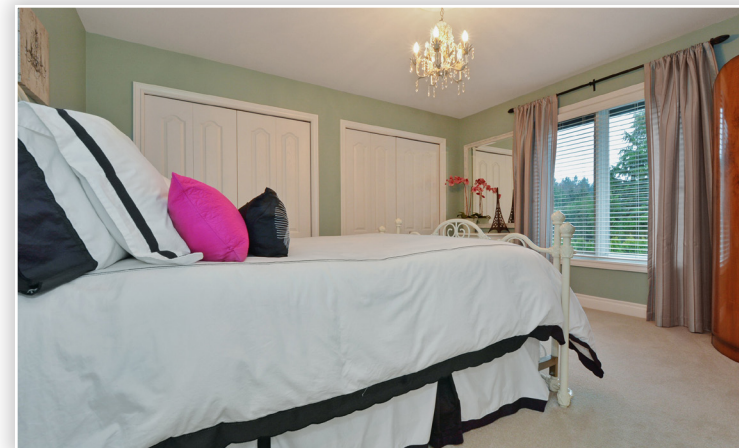
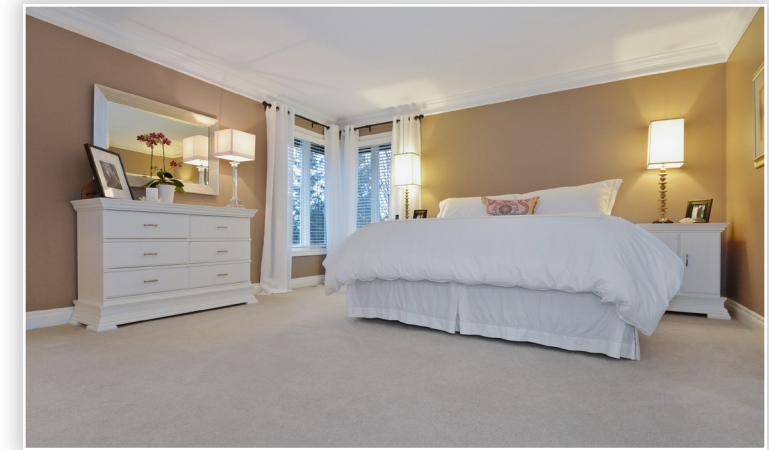
Your Best Way Home™

Please contact Gary Hedberg, 604-644-6442, for specifications.

This communication is not intended to cause or induce breach of an existing agency agreement.



www.homelifetitus.com



ELGIN PARK. Beautiful 5800 sqft Executive Home sitting on a Half Acre GD lot, just 1 block from Semiahmoo Trail Elementary school. This Two Storey plus Basement Quality built Home has Hardwood floors, lots of Built-ins, large Den off the impressive Entry, Gorgeous Renovated Kitchen with Double Ovens, 8' Granite island, 5 burner Gas Stove and Wine Cooler. Six Bedrooms, 4 Bathrooms & 4 Gas Fireplaces in total. Downstairs is a 3 bdrm Registered Suite with Gas Fireplace, Granite Counters in Kitchen, large walk-in Handicap Shower & Elevator from Main Floor, Private Patio plus a 9x7'6 Thermostatically Controlled Wine Room. Extensive Renovations throughout including New High Efficiency Furnace, ALL New Plumbing lines Inside & right out to the street. 2-50 Gal Hotwater tanks with Hot Water Recirculation System, New Bathrooms, Extensive Millwork throughout. New Built-in Vac on all 3 levels. 2 Huge Glass Covered Decks outside with a 34,000 BTU Heater. Far too much to list. Beautiful Private Rear Yard. This is a home you will be proud to live in.