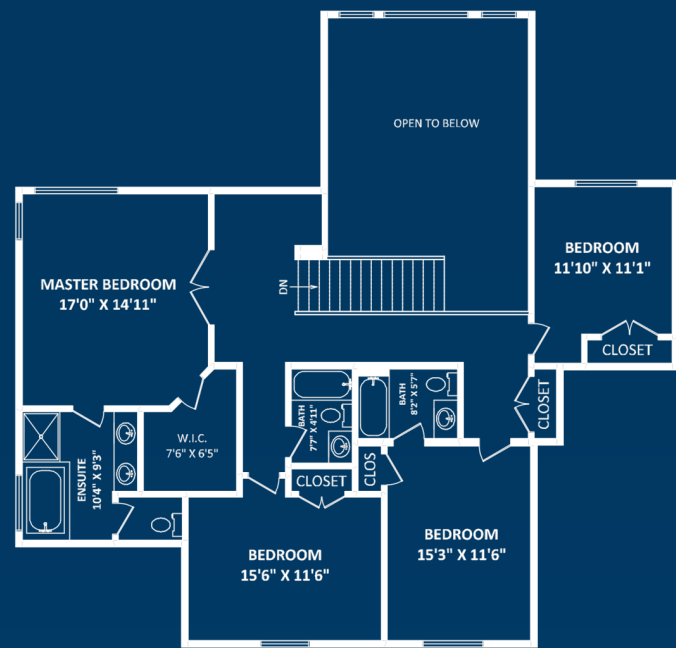
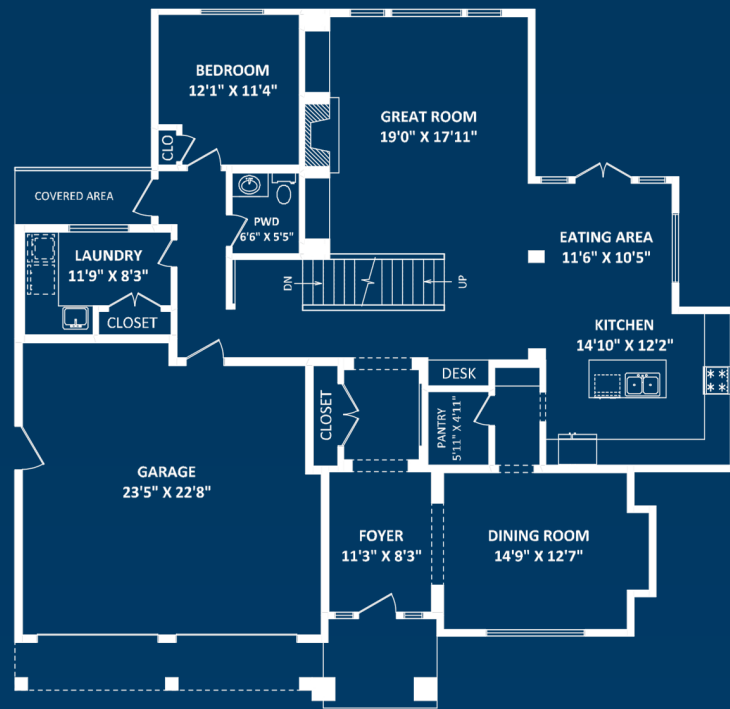


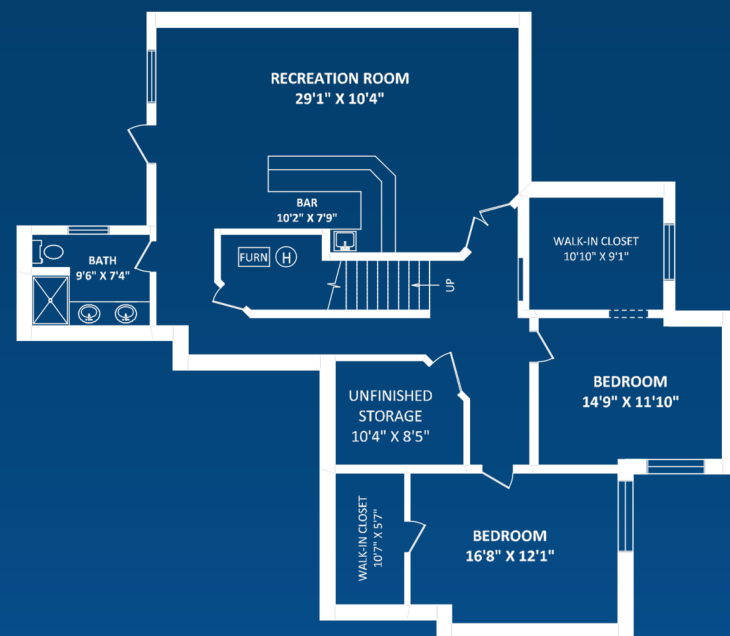
3223 142A St, South Surrey



UPPER FLOOR: 1492 SQ.FT.



MAIN FLOOR: 1792 SQ.FT.



LOWER FLOOR: 1752 SQ.FT.

TOTAL FLOOR AREA: 5036 SQ.FT.

OTHER AREA(S)
GARAGE: 556 SQ.FT.



Erik Hopkins

Macdonald Realty White Rock

Phone: (778) 919-1298

Email: erik@homesontheweb.ca

Website: www.homesontheweb.ca

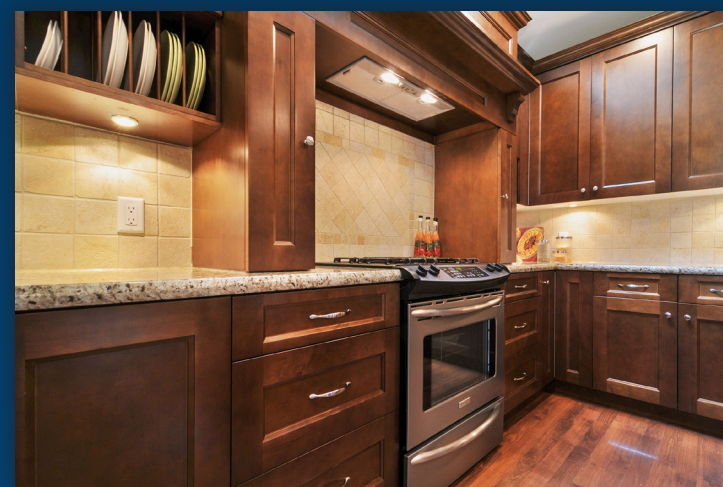
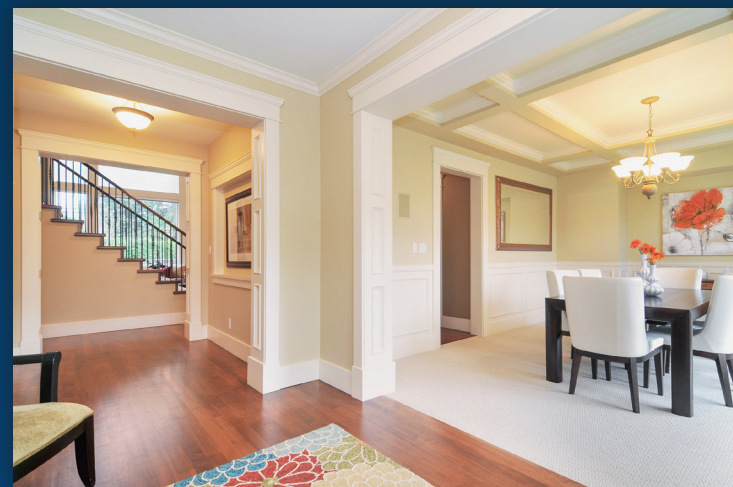
Website: www.3223-142a.com



This version of the floorplan is for marketing purposes only. Please contact Erik Hopkins for specifications: 778.919.1298

This communication is not intended to cause or induce breach of an existing agency agreement.





3223 142A St, Surrey

Executive home on private cul-de-sac in prestigious Elgin Estates. This stunning custom built home boasts pure elegance with an open layout, high ceilings, hardwood, wide staircases, bright rooms. Gourmet kitchen including custom cabinets, granite counters, high end SS appliances, oversized fridge. Great room is graced with 20' Whistler-like floor to ceiling windows & custom built-ins. Spacious master suite include elegant ensuite & large walk-in closet. Finished daylight basement including 2 large bedrooms, huge rec room and wet bar for entertaining, separate entry. South exposure yard w/ oversized stamped concrete patio, hot tub, perfect for pool. This home offers quality and comfort to the most discriminating buyer. Put this on your list of must-see homes!

Size	5,036 ft ²
Style	2 storey w/ fin bsmt
Bedrooms	6
Bathrooms	5
Year Built	2005
Lot	13,721 ft ²

For more photos and a virtual tour, please visit: www.3223-142a.com

ERIK HOPKINS
 Phone: (778) 919-1298
 Email: erik@homesontheweb.ca
 Website: www.homesontheweb.ca